

Bmx (E-2): sc-271025

BACKGROUND

The Tec family of non-receptor tyrosine kinases is composed of six proteins, designated Tec, Emt (also known as Itk or Tsk), Btk (previously known as Atk, BPK or Emb), Bmx, Txk (also known as Rlk) and Dsrc28C. All members of the family contain SH3 and SH2 domains and, with the exception of Txk and Dsrc28C, also contain a Pleckstrin homology (PH) and a Tec homology (TH) domain in their amino-termini. Four alternatively spliced forms of Tec are found to be expressed broadly in cells of hematopoietic lineage and in hepatocytes. The Emt gene product associates with CD28 and becomes activated subsequent to CD28 ligation. Btk is necessary for proper B cell development, and mutations in the gene encoding Btk have been associated with families suffering from X-linked agammaglobulinemia, also referred to as Bruton's disease. The Bmx protein shares a high degree of homology with Btk and seems to be expressed at highest levels in the heart. Txk expression is T cell-specific, while expression of the *Drosophila* Tec homolog, Dsrc28C, is developmentally regulated.

REFERENCES

1. Yamada, N., Kawakami, Y., Kimura, H., Fukamachi, H., Baier, G., Altman, A., Kato, T., Inagaki, Y. and Kawakami, T. 1993. Structure and expression of novel protein tyrosine kinases, Emb and Emt, in hematopoietic cells. *Biochem. Biophys. Res. Commun.* 192: 231-240.
2. Thomas, J.D., Sideras, P., Smith, C.I., Vorechovsky, I., Chapman, V. and Paul, W.E. 1993. Colocalization of X-linked agammaglobulinemia and X-linked immunodeficiency genes. *Science* 261: 355-358.
3. Tamagnone, L., Lahtinen, I., Mustonen, T., Virtaneva, K., Francis, F., Muscatelli, F., Alitalo, R., Smith, C.I., Larsson, C. and Alitalo, K. 1994. BMX, a novel nonreceptor tyrosine kinase gene of the BTK/ITK/TEC/TXK family located in chromosome Xp22.2. *Oncogene* 9: 3683-3688.
4. Haire, R.N., Ohta, Y., Lewis, J.E., Fu, S.M., Kroisel, P. and Litman, G.W. 1994. Txk, a novel human tyrosine kinase expressed in T cells shares sequence identity with Tec family kinases and maps to 4p12. *Hum. Mol. Genet.* 3: 897-901.
5. August, A., Gibson, S., Kawakami, Y., Kawakami, T., Mills, G.B. and Dupont, B. 1994. CD28 is associated with and induces the immediate tyrosine phosphorylation and activation of the Tec family kinase Itk/Emt in the human Jurkat leukemic T-cell line. *Proc. Natl. Acad. Sci. USA* 91: 9347-9351.
6. Hu, Q., Davidson, D., Schwartzberg, P.L., Macchiarini, F., Lenardo, M.J., Bluestone, J.A. and Matis, L.A. 1995. Identification of Rlk, a novel protein tyrosine kinase with predominant expression in the T cell lineage. *J. Biol. Chem.* 270: 1928-1934.

CHROMOSOMAL LOCATION

Genetic locus: BMX (human) mapping to Xp22.2.

SOURCE

Bmx (E-2) is a mouse monoclonal antibody raised against amino acids 81-300 mapping near the N-terminus of Bmx of human origin.

PRODUCT

Each vial contains 200 µg IgG₁ kappa light chain in 1.0 ml of PBS with < 0.1% sodium azide and 0.1% gelatin.

APPLICATIONS

Bmx (E-2) is recommended for detection of Bmx of human origin by Western Blotting (starting dilution 1:100, dilution range 1:100-1:1000), immunoprecipitation [1-2 µg per 100-500 µg of total protein (1 ml of cell lysate)], immunofluorescence (starting dilution 1:50, dilution range 1:50-1:500) and solid phase ELISA (starting dilution 1:30, dilution range 1:30-1:3000).

Suitable for use as control antibody for Bmx siRNA (h): sc-38941, Bmx shRNA Plasmid (h): sc-38941-SH and Bmx shRNA (h) Lentiviral Particles: sc-38941-V.

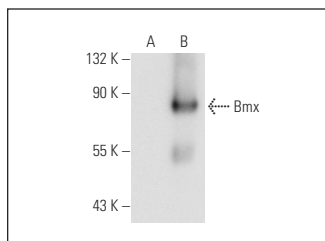
Molecular Weight of Bmx: 85 kDa.

Positive Controls: Bmx (h): 293T Lysate: sc-113287 or Jurkat whole cell lysate: sc-2204.

RECOMMENDED SUPPORT REAGENTS

To ensure optimal results, the following support reagents are recommended: 1) Western Blotting: use m-IgGκ BP-HRP: sc-516102 or m-IgGκ BP-HRP (Cruz Marker): sc-516102-CM (dilution range: 1:1000-1:10000), Cruz Marker™ Molecular Weight Standards: sc-2035, UltraCruz® Blocking Reagent: sc-516214 and Western Blotting Luminol Reagent: sc-2048. 2) Immunoprecipitation: use Protein A/G PLUS-Agarose: sc-2003 (0.5 ml agarose/2.0 ml). 3) Immunofluorescence: use m-IgGκ BP-FITC: sc-516140 or m-IgGκ BP-PE: sc-516141 (dilution range: 1:50-1:200) with UltraCruz® Mounting Medium: sc-24941 or UltraCruz® Hard-set Mounting Medium: sc-359850.

DATA



Bmx (E-2): sc-271025. Western blot analysis of Bmx expression in non-transfected: sc-117752 (A) and human Bmx transfected: sc-113287 (B) 293T whole cell lysates.

STORAGE

Store at 4° C, **DO NOT FREEZE**. Stable for one year from the date of shipment. Non-hazardous. No MSDS required.

RESEARCH USE

For research use only, not for use in diagnostic procedures.