

DC-SIGNR (C-10): sc-271086

BACKGROUND

Dendritic cells (DC) are antigen-presenting immune system cells that are present on peripheral mucosal tissues and migrate to lymphoid tissues. DC-SIGN (DC-specific ICAM-3 grabbing nonintegrin) is a type II membrane protein that is exclusively expressed by DC. DC-SIGN, also designated CD209, binds to ICAM-3 to mediate the initial interaction between DC and resting T cells through the immunological synapse. The DC that are present in the initial sites of HIV-1 infection capture HIV-1 through DC-SIGN, which then facilitates the migration of DC to areas of T cell-rich secondary lymphoid organs, where it promotes efficient trans HIV-1 infection of these T cells. DC-SIGNR (DC-SIGN-related molecule), also designated CD209L and L-SIGN (liver/lymph node-specific ICAM-3 grabbing nonintegrin), is a type II integral membrane protein that is 77% identical to DC-SIGN. It is expressed on sinusoidal endothelial cells and binds the E2 glycoproteins of the hepatitis C virus.

REFERENCES

1. Fauci, A. 1996. Host factors and the pathogenesis of HIV-induced disease. *Nature* 384: 529-534.
2. Yokoyama-Kobayashi, M., et al. 1999. Selection of cDNAs encoding putative type II membrane proteins on the cell surface from a human full-length cDNA bank. *Gene* 228: 161-167.
3. Soilleux, E.J., et al. 2000. DC-SIGN; a related gene, DC-SIGNR; and CD23 form a cluster on 19p13. *J. Immunol.* 165: 2937-2942.
4. Pöhlmann, S., et al. 2001. DC-SIGNR, a DC-SIGN homologue expressed in endothelial cells, binds to human and simian immunodeficiency viruses and activates infection in *trans*. *Proc. Natl. Acad. Sci. USA* 98: 2670-2675.

CHROMOSOMAL LOCATION

Genetic locus: CLEC4M (human) mapping to 19p13.2.

SOURCE

DC-SIGNR (C-10) is a mouse monoclonal antibody specific for an epitope mapping between amino acids 12-41 near the N-terminus of DC-SIGNR of human origin.

PRODUCT

Each vial contains 200 µg IgG₁ kappa light chain in 1.0 ml of PBS with < 0.1% sodium azide and 0.1% gelatin.

DC-SIGNR (C-10) is available conjugated to agarose (sc-271086 AC), 500 µg/0.25 ml agarose in 1 ml, for IP; to HRP (sc-271086 HRP), 200 µg/ml, for WB, IHC(P) and ELISA; to either phycoerythrin (sc-271086 PE), fluorescein (sc-271086 FITC), Alexa Fluor® 488 (sc-271086 AF488), Alexa Fluor® 546 (sc-271086 AF546), Alexa Fluor® 594 (sc-271086 AF594) or Alexa Fluor® 647 (sc-271086 AF647), 200 µg/ml, for WB (RGB), IF, IHC(P) and FCM; and to either Alexa Fluor® 680 (sc-271086 AF680) or Alexa Fluor® 790 (sc-271086 AF790), 200 µg/ml, for Near-Infrared (NIR) WB, IF and FCM.

Blocking peptide available for competition studies, sc-271086 P, (100 µg peptide in 0.5 ml PBS containing < 0.1% sodium azide and 0.2% stabilizer protein).

APPLICATIONS

DC-SIGNR (C-10) is recommended for detection of DC-SIGNR of human origin by Western Blotting (starting dilution 1:100, dilution range 1:100-1:1000), immunoprecipitation [1-2 µg per 100-500 µg of total protein (1 ml of cell lysate)], immunofluorescence (starting dilution 1:50, dilution range 1:50-1:500), immunohistochemistry (including paraffin-embedded sections) (starting dilution 1:50, dilution range 1:50-1:500) and solid phase ELISA (starting dilution 1:30, dilution range 1:30-1:3000).

Suitable for use as control antibody for DC-SIGNR siRNA (h): sc-42859, DC-SIGNR shRNA Plasmid (h): sc-42859-SH and DC-SIGNR shRNA (h) Lentiviral Particles: sc-42859-V.

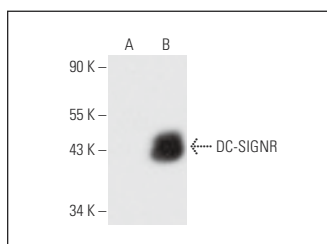
Molecular Weight of DC-SIGNR: 44 kDa.

Positive Controls: DC-SIGN (h): 293T Lysate: sc-115461.

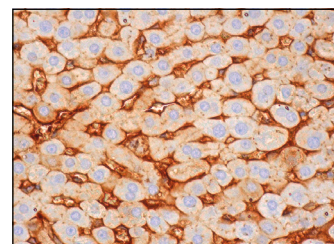
RECOMMENDED SUPPORT REAGENTS

To ensure optimal results, the following support reagents are recommended: 1) Western Blotting: use m-IgGκ BP-HRP: sc-516102 or m-IgGκ BP-HRP (Cruz Marker): sc-516102-CM (dilution range: 1:1000-1:10000), Cruz Marker™ Molecular Weight Standards: sc-2035, UltraCruz® Blocking Reagent: sc-516214 and Western Blotting Luminol Reagent: sc-2048. 2) Immunoprecipitation: use Protein A/G PLUS-Agarose: sc-2003 (0.5 ml agarose/2.0 ml). 3) Immunofluorescence: use m-IgGκ BP-FITC: sc-516140 or m-IgGκ BP-PE: sc-516141 (dilution range: 1:50-1:200) with UltraCruz® Mounting Medium: sc-24941 or UltraCruz® Hard-set Mounting Medium: sc-359850. 4) Immunohistochemistry: use m-IgGκ BP-HRP: sc-516102 with DAB, 50X: sc-24982 and Immunohistomount: sc-45086, or Organo/Limonene Mount: sc-45087.

DATA



DC-SIGNR (C-10): sc-271086. Western blot analysis of DC-SIGNR expression in non-transfected: sc-117752 (A) and human DC-SIGNR transfected: sc-115461 (B) 293T whole cell lysates.



DC-SIGNR (C-10): sc-271086. Immunoperoxidase staining of formalin fixed, paraffin-embedded human liver tissue showing cytoplasmic and membrane staining of hepatic sinusoids.

STORAGE

Store at 4° C, **DO NOT FREEZE**. Stable for one year from the date of shipment. Non-hazardous. No MSDS required.

RESEARCH USE

For research use only, not for use in diagnostic procedures.

Alexa Fluor® is a trademark of Molecular Probes, Inc., Oregon, USA