

BAF53 (D-8): sc-271177

BACKGROUND

The SWI/SNF complex regulates gene expression via ATP-dependent chromatin remodeling. Brm (SNF2-a), Brg-1 (SNF2-b), Ini1 (integrase interactor 1, SNF5), BAF53 (ARPN β), BAF57, BAF155 (SRG3), and BAF170 make up the functional core. BAF53 homologues from yeast to humans contain a conserved N-terminal motif, which contains residues at serine 2 and tyrosine 6, which play important roles in BAF53 activity. The BAF53 protein shuttles between the nucleus and cytoplasm. BAF53 also forms a complex with TIP49 and TIP48, which mediates c-Myc oncogenic activity.

REFERENCES

1. Imbalzano, A.N., Schnitzler, G.R. and Kingston, R.E. 1996. Nucleosome disruption by human SWI/SNF is maintained in the absence of continued ATP hydrolysis. *J. Biol. Chem.* 271: 20726-20733.
2. Phelan, M.L., Sif, S., Narlikar, G.J. and Kingston, R.E. 1999. Reconstitution of a core chromatin remodeling complex from SWI/SNF subunits. *Mol. Cell* 3: 247-253.
3. Ohfuchi, E., Nishimori, K. and Harata, M. 2002. Alternative splicing products of the gene for a human nuclear Actin-related protein, hArpN β /BAF53, that encode a protein isoform, hArpN β S, in the cytoplasm. *Biosci. Biotechnol. Biochem.* 66: 1740-1743.
4. Park, J., Wood, M.A. and Cole, M.D. 2002. BAF53 forms distinct nuclear complexes and functions as a critical c-Myc-interacting nuclear cofactor for oncogenic transformation. *Mol. Cell. Biol.* 22: 1307-1316.
5. Lee, J.H., Chang, S.H., Shim, J.H., Lee, J.Y., Yoshida, M. and Kwon, H. 2003. Cytoplasmic localization and nucleo-cytoplasmic shuttling of BAF53, a component of chromatin-modifying complexes. *Mol. Cells* 16: 78-83.
6. Lee, J.H., Lee, J.Y., Chang, S.H., Kang, M.J. and Kwon, H. 2005. Effects of Ser2 and Tyr6 mutants of BAF53 on cell growth and p53-dependent transcription. *Mol. Cells* 19: 289-293.

CHROMOSOMAL LOCATION

Genetic locus: ACTL6A (human) mapping to 3q26.33; Actl6a (mouse) mapping to 3 A3.

SOURCE

BAF53 (D-8) is a mouse monoclonal antibody raised against amino acids 47-171 mapping near the N-terminus of BAF53 of human origin.

PRODUCT

Each vial contains 200 μ g IgG_{2a} in 1.0 ml of PBS with < 0.1% sodium azide and 0.1% gelatin. Also available as TransCruz reagent for Gel Supershift and ChIP applications, sc-271177 X, 200 μ g/0.1 ml.

STORAGE

Store at 4° C, ****DO NOT FREEZE****. Stable for one year from the date of shipment. Non-hazardous. No MSDS required.

APPLICATIONS

BAF53 (D-8) is recommended for detection of BAF53 of mouse, rat and human origin by Western Blotting (starting dilution 1:100, dilution range 1:100-1:1000), immunoprecipitation [1-2 μ g per 100-500 μ g of total protein (1 ml of cell lysate)], immunofluorescence (starting dilution 1:50, dilution range 1:50-1:500) and solid phase ELISA (starting dilution 1:30, dilution range 1:30-1:3000).

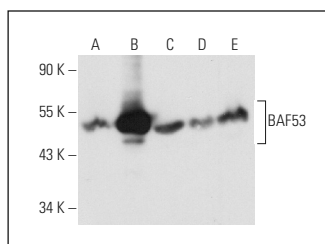
Suitable for use as control antibody for BAF53 siRNA (h): sc-60239, BAF53 siRNA (m): sc-60240, BAF53 shRNA Plasmid (h): sc-60239-SH, BAF53 shRNA Plasmid (m): sc-60240-SH, BAF53 shRNA (h) Lentiviral Particles: sc-60239-V and BAF53 shRNA (m) Lentiviral Particles: sc-60240-V.

BAF53 (D-8) X TransCruz antibody is recommended for Gel Supershift and ChIP applications.

Molecular Weight of BAF53: 45 kDa.

Positive Controls: BAF53 (m2): 293T Lysate: sc-118665, HeLa whole cell lysate: sc-2200 or K-562 whole cell lysate: sc-2203.

DATA



BAF53 (D-8): sc-271177. Western blot analysis of BAF53 expression in non-transfected 293T: sc-117752 (A), mouse BAF53 transfected 293T: sc-118665 (B), K-562 (C), HeLa (D) and Ramos (E) whole cell lysates.

RESEARCH USE

For research use only, not for use in diagnostic procedures.

PROTOCOLS

See our web site at www.scbt.com for detailed protocols and support products.