

VEGF-C (A-16): sc-27128

BACKGROUND

The onset of angiogenesis is believed to be an early event in tumorigenesis and may facilitate tumor progression and metastasis. Several growth factors with angiogenic activity have been described. These include fibroblast growth factor (FGF), platelet derived growth factor (PDGF) and vascular endothelial growth factor (VEGF). VEGF is a dimeric glycoprotein with structural homology to PDGF. Several variants of VEGF have been described that arise by alternative mRNA splicing. It has been speculated that VEGF may function as a tumor angiogenesis factor *in vivo*. Two additional proteins designated VEGF-B and VEGF-C share a significant degree of homology with VEGF. VEGF-B is abundantly expressed in heart and skeletal muscle and is frequently coexpressed with VEGF. VEGF-C binds to and specifically activates Flt-4 and Flk-1. The genes that encode VEGF-B and VEGF-C have been localized to chromosomes 11q13.1 and 4q34.3, respectively.

CHROMOSOMAL LOCATION

Genetic locus: VEGFC (human) mapping to 4q34.3; Vegfc (mouse) mapping to 8 B1.3.

SOURCE

VEGF-C (A-16) is an affinity purified goat polyclonal antibody raised against a peptide mapping near the N-terminus of VEGF-C of human origin.

PRODUCT

Each vial contains 200 µg IgG in 1.0 ml of PBS with < 0.1% sodium azide and 0.1% gelatin.

Blocking peptide available for competition studies, sc-27128 P, (100 µg peptide in 0.5 ml PBS containing < 0.1% sodium azide and 0.2% BSA).

STORAGE

Store at 4° C, ****DO NOT FREEZE****. Stable for one year from the date of shipment. Non-hazardous. No MSDS required.

APPLICATIONS

VEGF-C (A-16) is recommended for detection of precursor and mature VEGF-C of mouse, rat and human origin by Western Blotting (starting dilution 1:200, dilution range 1:100-1:1000), immunoprecipitation [1-2 µg per 100-500 µg of total protein (1 ml of cell lysate)], immunofluorescence (starting dilution 1:50, dilution range 1:50-1:500) and solid phase ELISA (starting dilution 1:30, dilution range 1:30-1:3000).

VEGF-C (A-16) is also recommended for detection of precursor and mature VEGF-C in additional species, including canine, bovine, porcine and avian.

Suitable for use as control antibody for VEGF-C siRNA (h): sc-39842, VEGF-C siRNA (m): sc-39843, VEGF-C shRNA Plasmid (h): sc-39842-SH, VEGF-C shRNA Plasmid (m): sc-39843-SH, VEGF-C shRNA (h) Lentiviral Particles: sc-39842-V and VEGF-C shRNA (m) Lentiviral Particles: sc-39843-V.

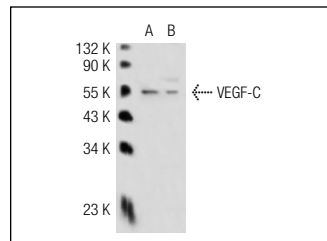
Molecular Weight of VEGF-C: 40/80 kDa.

Positive Controls: VEGF-C (h): 293T Lysate: sc-113917, MH-S whole cell lysate: sc-364785 or mouse brain extract: sc-2253.

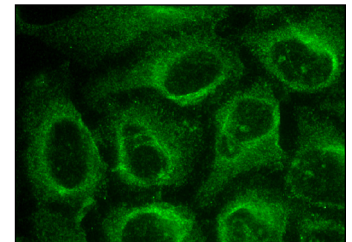
RECOMMENDED SECONDARY REAGENTS

To ensure optimal results, the following support (secondary) reagents are recommended: 1) Western Blotting: use donkey anti-goat IgG-HRP: sc-2020 (dilution range: 1:2000-1:100,000) or Cruz Marker™ compatible donkey anti-goat IgG-HRP: sc-2033 (dilution range: 1:2000-1:5000), Cruz Marker™ Molecular Weight Standards: sc-2035, TBS Blotto A Blocking Reagent: sc-2333 and Western Blotting Luminol Reagent: sc-2048. 2) Immunoprecipitation: use Protein A/G PLUS-Agarose: sc-2003 (0.5 ml agarose/2.0 ml). 3) Immunofluorescence: use donkey anti-goat IgG-FITC: sc-2024 (dilution range: 1:100-1:400) or donkey anti-goat IgG-TR: sc-2783 (dilution range: 1:100-1:400) with UltraCruz™ Mounting Medium: sc-24941.

DATA



VEGF-C (A-16): sc-27128. Western blot analysis of VEGF-C expression in non-transfected: sc-117752 (A) and human VEGF-C transfected: sc-113917 (B) 293T whole cell lysates.



VEGF-C (A-16): sc-27128. Immunofluorescence staining of methanol-fixed HeLa cells showing cytoplasmic localization.

RESEARCH USE

For research use only, not for use in diagnostic procedures.

PROTOCOLS

See our web site at www.scbt.com or our catalog for detailed protocols and support products.



Try **VEGF-C (E-6): sc-374628** or **VEGF-C (F-10): sc-74585**, our highly recommended monoclonal alternatives to VEGF-C (A-16). Also, for AC, HRP, FITC, PE, Alexa Fluor® 488 and Alexa Fluor® 647 conjugates, see **VEGF-C (E-6): sc-374628**.