

# GRK 2 (G-12): sc-271359

## BACKGROUND

Heterotrimeric G protein-mediated signal transduction is a dynamically regulated process with the intensity of signal decreasing over time despite the continued presence of the agonist. This phenomenon, referred to as agonist-mediated desensitization, involves phosphorylation of the receptor by two classes of enzymes. The first class is comprised of the second messenger-regulated kinases, such as c-AMP dependent protein kinase A and protein kinase C. The second class includes the G protein-coupled receptor kinases (GRKs). At least seven members of the GRK family have been identified. These include rhodopsin kinase (GRK 1), two forms of  $\beta$ -adrenergic receptor kinase: GRK 2 ( $\beta$ ARK,  $\beta$ ARK1) and GRK 3 ( $\beta$ ARK2), IT-11 (GRK 4), GRK 5, GRK 6 and GRK 7. Phosphorylation of receptors by GRKs appears to be strictly dependent on the receptor being in its agonist-activated state.

## CHROMOSOMAL LOCATION

Genetic locus: ADRBK1 (human) mapping to 11q13.2; Adrbk1 (mouse) mapping to 19 A.

## SOURCE

GRK 2 (G-12) is a mouse monoclonal antibody specific for an epitope mapping between amino acids 661-699 near the C-terminus of GRK 2 of human origin.

## PRODUCT

Each vial contains 200  $\mu$ g IgG<sub>2a</sub> kappa light chain in 1.0 ml of PBS with < 0.1% sodium azide and 0.1% gelatin.

Blocking peptide available for competition studies, sc-271359 P, (100  $\mu$ g peptide in 0.5 ml PBS containing < 0.1% sodium azide and 0.2% stabilizer protein).

## APPLICATIONS

GRK 2 (G-12) is recommended for detection of GRK 2 of mouse, rat and human origin by Western Blotting (starting dilution 1:100, dilution range 1:100-1:1000), immunoprecipitation [1-2  $\mu$ g per 100-500  $\mu$ g of total protein (1 ml of cell lysate)], immunofluorescence (starting dilution 1:50, dilution range 1:50-1:500), immunohistochemistry (including paraffin-embedded sections) (starting dilution 1:50, dilution range 1:50-1:500) and solid phase ELISA (starting dilution 1:30, dilution range 1:30-1:3000).

GRK 2 (G-12) is also recommended for detection of GRK 2 in additional species, including bovine, porcine and canine.

Suitable for use as control antibody for GRK 2 siRNA (h): sc-29337, GRK 2 siRNA (m): sc-35513, GRK 2 siRNA (r): sc-270408, GRK 2 shRNA Plasmid (h): sc-29337-SH, GRK 2 shRNA Plasmid (m): sc-35513-SH, GRK 2 shRNA Plasmid (r): sc-270408-SH, GRK 2 shRNA (h) Lentiviral Particles: sc-29337-V, GRK 2 shRNA (m) Lentiviral Particles: sc-35513-V and GRK 2 shRNA (r) Lentiviral Particles: sc-270408-V.

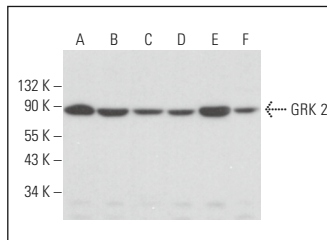
Molecular Weight of GRK 2: 80 kDa.

Positive Controls: Raji whole cell lysate: sc-364236, NAMALWA cell lysate: sc-2234 or K-562 whole cell lysate: sc-2203.

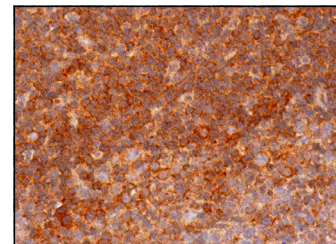
## RECOMMENDED SUPPORT REAGENTS

To ensure optimal results, the following support reagents are recommended: 1) Western Blotting: use m-IgG $\kappa$  BP-HRP: sc-516102 or m-IgG $\kappa$  BP-HRP (Cruz Marker): sc-516102-CM (dilution range: 1:1000-1:10000), Cruz Marker™ Molecular Weight Standards: sc-2035, UltraCruz® Blocking Reagent: sc-516214 and Western Blotting Luminol Reagent: sc-2048. 2) Immunoprecipitation: use Protein A/G PLUS-Agarose: sc-2003 (0.5 ml agarose/2.0 ml). 3) Immunofluorescence: use m-IgG $\kappa$  BP-FITC: sc-516140 or m-IgG $\kappa$  BP-PE: sc-516141 (dilution range: 1:50-1:200) with UltraCruz® Mounting Medium: sc-24941 or UltraCruz® Hard-set Mounting Medium: sc-359850. 4) Immunohistochemistry: use m-IgG $\kappa$  BP-HRP: sc-516102 with DAB, 50X: sc-24982 and Immunohistomount: sc-45086, or Organo/Limonene Mount: sc-45087.

## DATA



GRK 2 (G-12): sc-271359. Western blot analysis of GRK 2 expression in NAMALWA (A), Raji (B), K-562 (C), WEHI-231 (D), WR19L (E) and AT3B-1 (F) whole cell lysates.



GRK 2 (G-12): sc-271359. Immunoperoxidase staining of formalin fixed, paraffin-embedded human tonsil tissue showing cytoplasmic staining of cells in germinal and non-germinal centers.

## STORAGE

Store at 4° C, \*\*DO NOT FREEZE\*\*. Stable for one year from the date of shipment. Non-hazardous. No MSDS required.

## RESEARCH USE

For research use only, not for use in diagnostic procedures.

## PROTOCOLS

See our web site at [www.scbt.com](http://www.scbt.com) for detailed protocols and support products.



See **GRK 2 (C-9): sc-13143** for GRK 2 antibody conjugates, including AC, HRP, FITC, PE, and Alexa Fluor® 488, 546, 594, 647, 680 and 790.