

GPT (B-1): sc-271370

BACKGROUND

The glutamate pyruvate transaminases GPT (or GPT1) and GPT2, also designated alanine aminotransferases (ALT1 and ALT2), respectively, catalyze the reversible transamination between alanine and 2-oxoglutarate to form pyruvate and glutamate. Subsequently, they play a key role in the intermediary metabolism of glucose and amino acids. GPT and GPT2 share significant sequence homology, but differ in their expression patterns. GPT exhibits high expression in kidney, liver and heart, whereas GPT2 expression is high in muscle, fat and kidney. GPT is widely used as an index of liver integrity or hepatocellular damage in clinical settings.

REFERENCES

1. Sohocki, M.M., Sullivan, L.S., Harrison, W.R., Sodergren, E.J., Elder, F.F., Weinstock, G., Tanase, S. and Daiger, S.P. 1997. Human glutamate pyruvate transaminase (GPT): localization to 8q24.3, cDNA and genomic sequences and polymorphic sites. *Genomics* 40: 247-252.
2. Yang, R.Z., Blaileanu, G., Hansen, B.C., Shuldiner, A.R. and Gong, D.W. 2002. cDNA cloning, genomic structure, chromosomal mapping and functional expression of a novel human alanine aminotransferase. *Genomics* 79: 445-450.
3. Matthews, C.C., Zielke, H.R., Parks, D.A. and Fishman, P.S. 2003. Glutamate-pyruvate transaminase protects against glutamate toxicity in hippocampal slices. *Brain Res.* 978: 59-64.
4. Jadhao, S.B., Yang, R.Z., Lin, Q., Hu, H., Anania, F.A., Shuldiner, A.R. and Gong, D.W. 2004. Murine alanine aminotransferase: cDNA cloning, functional expression and differential gene regulation in mouse fatty liver. *Hepatology* 39: 1297-1302.
5. Lagoa, C.E., Vodovotz, Y., Stolz, D.B., Lhuillier, F., McCloskey, C., Gallo, D., Yang, R., Ustinova, E., Fink, M.P., Billiar, T.R. and Mars, W.M. 2005. The role of hepatic type 1 plasminogen activator inhibitor (PAI-1) during murine hemorrhagic shock. *Hepatology* 42: 390-399.
6. Nagel, S., Hegemann, O., Groneberg, D.A. and Grosse-Siestrup, C. 2005. An improved model of isolated hemoperfused porcine livers using pneumatically driven pulsating blood pumps. *Toxicol. Pathol.* 33: 434-440.
7. Schindhelm, R.K., Diamant, M., Bakker, S.J., van Dijk, R.A., Scheffer, P.G., Teerlink, T., Kostense, P.J. and Heine, R.J. 2005. Liver alanine aminotransferase, Insulin resistance and endothelial dysfunction in normotriglyceridaemic subjects with type 2 diabetes mellitus. *Eur. J. Clin. Invest.* 35: 369-374.

CHROMOSOMAL LOCATION

Genetic locus: *Gpt* (mouse) mapping to 15 D3.

SOURCE

GPT (B-1) is a mouse monoclonal antibody specific for an epitope mapping between amino acids 2-33 at the N-terminus of GPT of mouse origin.

RESEARCH USE

For research use only, not for use in diagnostic procedures.

PRODUCT

Each vial contains 200 µg IgG₃ kappa light chain in 1.0 ml of PBS with < 0.1% sodium azide and 0.1% gelatin.

Blocking peptide available for competition studies, sc-271370 P, (100 µg peptide in 0.5 ml PBS containing < 0.1% sodium azide and 0.2% stabilizer protein).

APPLICATIONS

GPT (B-1) is recommended for detection of GPT of mouse origin by Western Blotting (starting dilution 1:100, dilution range 1:100-1:1000), immunoprecipitation [1-2 µg per 100-500 µg of total protein (1 ml of cell lysate)], immunofluorescence (starting dilution 1:50, dilution range 1:50-1:500) and solid phase ELISA (starting dilution 1:30, dilution range 1:30-1:3000).

Suitable for use as control antibody for GPT siRNA (m): sc-60754, GPT shRNA Plasmid (m): sc-60754-SH and GPT shRNA (m) Lentiviral Particles: sc-60754-V.

Molecular Weight of GPT: 48 kDa.

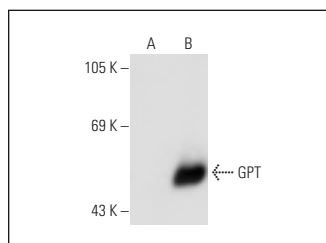
Positive Controls: mouse heart extract: sc-2254, GPT (m): 293T Lysate: sc-120612 or mouse liver extract: sc-2256.

RECOMMENDED SUPPORT REAGENTS

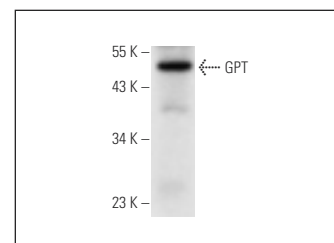
To ensure optimal results, the following support reagents are recommended:

- 1) Western Blotting: use m-IgGκ BP-HRP: sc-516102 or m-IgGκ BP-HRP (Cruz Marker): sc-516102-CM (dilution range: 1:1000-1:10000), Cruz Marker™ Molecular Weight Standards: sc-2035, UltraCruz® Blocking Reagent: sc-516214 and Western Blotting Luminol Reagent: sc-2048.
- 2) Immunoprecipitation: use Protein A/G PLUS-Agarose: sc-2003 (0.5 ml agarose/2.0 ml).
- 3) Immunofluorescence: use m-IgGκ BP-FITC: sc-516140 or m-IgGκ BP-PE: sc-516141 (dilution range: 1:50-1:200) with UltraCruz® Mounting Medium: sc-24941 or UltraCruz® Hard-set Mounting Medium: sc-359850.

DATA



GPT (B-1): sc-271370. Western blot analysis of GPT expression in non-transfected: sc-117752 (A) and mouse GPT transfected: sc-120612 (B) 293T whole cell lysates.



GPT (B-1): sc-271370. Western blot analysis of GPT expression in mouse liver tissue extract.

STORAGE

Store at 4° C, **DO NOT FREEZE**. Stable for one year from the date of shipment. Non-hazardous. No MSDS required.