

# MafA (E-13): sc-27138

## BACKGROUND

Members of the bZIP containing Maf transcription factor family play important roles in cellular differentiation and regulation. MafA, originally identified in mammals as the pancreatic  $\beta$ -cell specific RIPE3b1 factor, is a transcriptional activator expressed specifically in Insulin-producing cells, where it functions by binding to the critical Insulin enhancer element RIPE3b. MafA is critical for generating and regulating glucose-responsive Insulin expression in  $\beta$  cells. The size of MafA in mammalian cell lines varies, due to posttranslational modification of the protein.

## CHROMOSOMAL LOCATION

Genetic locus: MAFA (human) mapping to 8q24.3; Mafa (mouse) mapping to 15 D3.

## SOURCE

MafA (E-13) is an affinity purified goat polyclonal antibody raised against a peptide mapping near the N-terminus of MafA of human origin.

## PRODUCT

Each vial contains 200  $\mu$ g IgG in 1.0 ml of PBS with < 0.1% sodium azide and 0.1% gelatin. Also available as TransCruz reagent for Gel Supershift and ChIP applications, sc-27138 X, 200  $\mu$ g/0.1 ml.

Blocking peptide available for competition studies, sc-27138 P, (100  $\mu$ g peptide in 0.5 ml PBS containing < 0.1% sodium azide and 0.2% BSA).

## STORAGE

Store at 4° C, **\*\*DO NOT FREEZE\*\***. Stable for one year from the date of shipment. Non-hazardous. No MSDS required.

## APPLICATIONS

MafA (E-13) is recommended for detection of MafA of mouse and human origin by Western Blotting (starting dilution 1:200, dilution range 1:100-1:1000), immunoprecipitation [1-2  $\mu$ g per 100-500  $\mu$ g of total protein (1 ml of cell lysate)], immunofluorescence (starting dilution 1:50, dilution range 1:50-1:500) and solid phase ELISA (starting dilution 1:30, dilution range 1:30-1:3000).

Suitable for use as control antibody for MafA siRNA (h): sc-43905, MafA siRNA (m): sc-149215, MafA shRNA Plasmid (h): sc-43905-SH, MafA shRNA Plasmid (m): sc-149215-SH, MafA shRNA (h) Lentiviral Particles: sc-43905-V and MafA shRNA (m) Lentiviral Particles: sc-149215-V.

MafA (E-13) X TransCruz antibody is recommended for Gel Supershift and ChIP applications.

Molecular Weight of MafA monomer: 18 kDa.

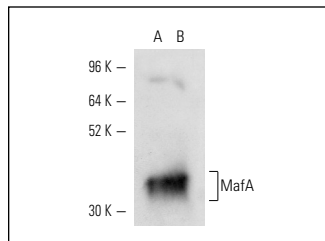
Molecular Weight of MafA glycoprotein: 28-40 kDa.

Positive Controls: mouse eye extract: sc-364241 or mouse pancreas extract: sc-364244.

## RECOMMENDED SECONDARY REAGENTS

To ensure optimal results, the following support (secondary) reagents are recommended: 1) Western Blotting: use donkey anti-goat IgG-HRP: sc-2020 (dilution range: 1:2000-1:100,000) or Cruz Marker™ compatible donkey anti-goat IgG-HRP: sc-2033 (dilution range: 1:2000-1:5000), Cruz Marker™ Molecular Weight Standards: sc-2035, TBS Blotto A Blocking Reagent: sc-2333 and Western Blotting Luminol Reagent: sc-2048. 2) Immunoprecipitation: use Protein A/G PLUS-Agarose: sc-2003 (0.5 ml agarose/2.0 ml). 3) Immunofluorescence: use donkey anti-goat IgG-FITC: sc-2024 (dilution range: 1:100-1:400) or donkey anti-goat IgG-TR: sc-2783 (dilution range: 1:100-1:400) with UltraCruz™ Mounting Medium: sc-24941.

## DATA



MafA (E-13): sc-27138. Western blot analysis of MafA expression in mouse eye (A) and mouse pancreas (B) tissue extracts.

## RESEARCH USE

For research use only, not for use in diagnostic procedures.

## PROTOCOLS

See our web site at [www.scbt.com](http://www.scbt.com) or our catalog for detailed protocols and support products.

**MONOS**  
Satisfaction  
Guaranteed

Try **MafA (F-6): sc-390491**, our highly recommended monoclonal alternative to MafA (E-13).