

## FGF-10 (F-20): sc-27148

### BACKGROUND

Fibroblast growth factor-1 (FGF-1), also designated acidic FGF, and fibroblast growth factor-2 (FGF-2), also designated basic FGF, are members of a family of growth factors that stimulate proliferation of cells of mesenchymal, epithelial and neuroectodermal origin. Additional members of the FGF family include the oncogenes FGF-3 (Int2) and FGF-4 (hst/Kaposi), FGF-5, FGF-6, FGF-7 (KGF), FGF-8 (AIGF), FGF-9 (GAF) and FGF-10–FGF-23. Members of the FGF family share 30-55% amino acid sequence identity and similar gene structure, and are capable of transforming cultured cells when overexpressed in transfected cells. Cellular receptors for FGFs are members of a second multigene family including four tyrosine kinases, designated Flg (FGFR-1), Bek (FGFR-L), TKF and FGFR-3.

### REFERENCES

- Moore, R., et al. 1986. Sequence, topography and protein coding potential of mouse int-2: a putative oncogene activated by mouse mammary tumor virus. *EMBO J.* 5: 919-924.
- Delli Bovi, P., et al. 1987. An oncogene isolated by transfection of Kaposi's sarcoma DNA encodes a growth factor that is a member of the FGF family. *Cell* 50: 729-737.
- Zhan, X., et al. 1988. The human FGF-5 oncogene encodes a novel protein related to fibroblast growth factors. *Mol. Cell. Biol.* 8: 3487-3495.
- Marics, I., et al. 1989. Characterization of the HST-related FGF.6 gene, a new member of the fibroblast growth factor gene family. *Oncogene* 4: 335-340.
- Rifkin, D.B. and Moscatelli, D. 1989. Recent developments in the cell biology of fibroblast growth factor. *J. Cell Biol.* 109: 1-6.
- Tanaka, A., et al. 1992. Cloning and characterization of an androgen-induced growth factor essential for the androgen-dependent growth of mouse mammary carcinoma cells. *Proc. Natl. Acad. Sci. USA* 89: 8928-8932.

### CHROMOSOMAL LOCATION

Genetic locus: FGF10 (human) mapping to 5p12; Fgf10 (mouse) mapping to 13 D2.3.

### SOURCE

FGF-10 (F-20) is an affinity purified goat polyclonal antibody raised against a peptide mapping near the N-terminus of FGF-10 of human origin.

### PRODUCT

Each vial contains 200 µg IgG in 1.0 ml of PBS with < 0.1% sodium azide and 0.1% gelatin.

Blocking peptide available for competition studies, sc-27148 P, (100 µg peptide in 0.5 ml PBS containing < 0.1% sodium azide and 0.2% BSA).

### STORAGE

Store at 4° C, **\*\*DO NOT FREEZE\*\***. Stable for one year from the date of shipment. Non-hazardous. No MSDS required.

### APPLICATIONS

FGF-10 (F-20) is recommended for detection of precursor and mature FGF-10 of mouse, rat and human origin by Western Blotting (starting dilution 1:200, dilution range 1:100-1:1000), immunofluorescence (starting dilution 1:50, dilution range 1:50-1:500), immunohistochemistry (including paraffin-embedded sections) (starting dilution 1:50, dilution range 1:50-1:500) and solid phase ELISA (starting dilution 1:30, dilution range 1:30-1:3000).

FGF-10 (F-20) is also recommended for detection of precursor and mature FGF-10 in additional species, including equine, porcine and avian.

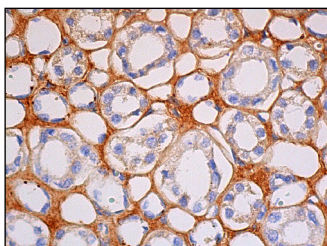
Suitable for use as control antibody for FGF-10 siRNA (h): sc-39462, FGF-10 siRNA (m): sc-39463, FGF-10 shRNA Plasmid (h): sc-39462-SH, FGF-10 shRNA Plasmid (m): sc-39463-SH, FGF-10 shRNA (h) Lentiviral Particles: sc-39462-V and FGF-10 shRNA (m) Lentiviral Particles: sc-39463-V.

Molecular Weight of FGF-10: 19 kDa.

### RECOMMENDED SECONDARY REAGENTS

To ensure optimal results, the following support (secondary) reagents are recommended: 1) Western Blotting: use donkey anti-goat IgG-HRP: sc-2020 (dilution range: 1:2000-1:100,000) or Cruz Marker™ compatible donkey anti-goat IgG-HRP: sc-2033 (dilution range: 1:2000-1:5000), Cruz Marker™ Molecular Weight Standards: sc-2035, TBS Blotto A Blocking Reagent: sc-2333 and Western Blotting Luminol Reagent: sc-2048. 2) Immunofluorescence: use donkey anti-goat IgG-FITC: sc-2024 (dilution range: 1:100-1:400) or donkey anti-goat IgG-TR: sc-2783 (dilution range: 1:100-1:400) with UltraCruz™ Mounting Medium: sc-24941. 3) Immunohistochemistry: use ImmunoCruz™: sc-2053 or ABC: sc-2023 goat IgG Staining Systems.

### DATA



FGF-10 (F-20): sc-27148. Immunoperoxidase staining of formalin fixed, paraffin-embedded human kidney tissue showing staining of connective tissue.

### RESEARCH USE

For research use only, not for use in diagnostic procedures.

**MONOS**  
Satisfaction  
Guaranteed

Try **FGF-10 (3C7): sc-293208**, our highly recommended monoclonal alternative to FGF-10 (F-20).