

Annexin XI (E-10): sc-271487

BACKGROUND

The annexin family of calcium-binding proteins is composed of at least ten mammalian genes. It is characterized by a conserved core domain, which binds to phospholipids in a Ca^{2+} -dependent manner, and a unique amino-terminal region, which may confer binding specificity. The annexin family has been implicated as regulators of such diverse processes as ion-flux, endocytosis and exocytosis and cellular adhesion. Two forms of Annexin XI, designated A and B, have been identified. Transfection of COS-7 cells with Annexin XI-A, but not Annexin XI-B, causes formation of Annexin XI-associated vesicles.

REFERENCES

1. Smith, P.D. and Moss, S.E. 1994. Structural evolution of the Annexin supergene family. *Trends Genet.* 10: 241-246.
2. Waisman, D.M. 1995. Annexin II tetramer: structure and function. *Mol. Cell. Biochem.* 149: 301-322.
3. Mailliard, W.S., Haigler, H.T. and Schlaepfer, D.D. 1996. Calcium-dependent binding of S100C to the N-terminal domain of Annexin I. *J. Biol. Chem.* 271: 719-725.
4. Chasserot-Golaz, S., Vitale, N., Sagot, I., Delouche, B., Dirrig, S., Pradel, L.A., Henry, J.P., Aunis, D. and Bader, M.F. 1996. Annexin II in exocytosis: catecholamine secretion requires the translocation of p36 to the subplasmalemmal region in chromaffin cells. *J. Cell Biol.* 133: 1217-1236.
5. Sudo, T., Mamiya, N., Goto, M., Watanabe, Y. and Hidaka, H. 1996. Isoform-specific intracellular vesicle formation by recombinant Annexin XI-A in Sf9 cells. *Biochem. Biophys. Res. Commun.* 223: 706-711.
6. Williams, L.H., McClive, P.J., Van Den Bergen, J.A. and Sinclair, A.H. 2005. Annexin XI co-localises with Calyculin in proliferating cells of the embryonic mouse testis. *Dev. Dyn.* 234: 432-437.

CHROMOSOMAL LOCATION

Genetic locus: ANXA11 (human) mapping to 10q22.3; Anxa11 (mouse) mapping to 14 A3.

SOURCE

Annexin XI (E-10) is a mouse monoclonal antibody specific for an epitope mapping between amino acids 61-77 at the N-terminus of Annexin XI of human origin.

PRODUCT

Each vial contains 200 μ g IgG_{2b} kappa light chain in 1.0 ml of PBS with < 0.1% sodium azide and 0.1% gelatin.

Blocking peptide available for competition studies, sc-271487 P, (100 μ g peptide in 0.5 ml PBS containing < 0.1% sodium azide and 0.2% stabilizer protein).

STORAGE

Store at 4° C, ****DO NOT FREEZE****. Stable for one year from the date of shipment. Non-hazardous. No MSDS required.

APPLICATIONS

Annexin XI (E-10) is recommended for detection of Annexin XI of mouse, rat and human origin by Western Blotting (starting dilution 1:100, dilution range 1:100-1:1000), immunoprecipitation [1-2 μ g per 100-500 μ g of total protein (1 ml of cell lysate)], immunofluorescence (starting dilution 1:50, dilution range 1:50-1:500), immunohistochemistry (including paraffin-embedded sections) (starting dilution 1:50, dilution range 1:50-1:500) and solid phase ELISA (starting dilution 1:30, dilution range 1:30-1:3000).

Suitable for use as control antibody for Annexin XI siRNA (h): sc-29694, Annexin XI siRNA (m): sc-29695, Annexin XI shRNA Plasmid (h): sc-29694-SH, Annexin XI shRNA Plasmid (m): sc-29695-SH, Annexin XI shRNA (h) Lentiviral Particles: sc-29694-V and Annexin XI shRNA (m) Lentiviral Particles: sc-29695-V.

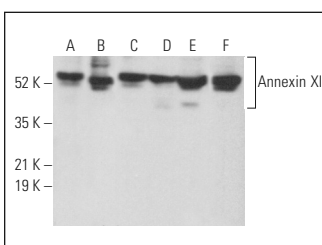
Molecular Weight of Annexin XI: 50-56 kDa.

Positive Controls: WI-38 whole cell lysate: sc-364260, NIH/3T3 nuclear extract: sc-2138 or 3T3-L1 cell lysate: sc-2243.

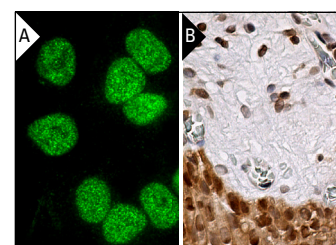
RECOMMENDED SUPPORT REAGENTS

To ensure optimal results, the following support reagents are recommended: 1) Western Blotting: use m-IgG κ BP-HRP: sc-516102 or m-IgG κ BP-HRP (Cruz Marker): sc-516102-CM (dilution range: 1:1000-1:10000), Cruz Marker™ Molecular Weight Standards: sc-2035, UltraCruz® Blocking Reagent: sc-516214 and Western Blotting Luminol Reagent: sc-2048. 2) Immunoprecipitation: use Protein A/G PLUS-Agarose: sc-2003 (0.5 ml agarose/2.0 ml). 3) Immunofluorescence: use m-IgG κ BP-FITC: sc-516140 or m-IgG κ BP-PE: sc-516141 (dilution range: 1:50-1:200) with UltraCruz® Mounting Medium: sc-24941 or UltraCruz® Hard-set Mounting Medium: sc-359850. 4) Immunohistochemistry: use m-IgG κ BP-HRP: sc-516102 with DAB, 50X: sc-24982 and Immunohistomount: sc-45086, or Organo/Limonene Mount: sc-45087.

DATA



Annexin XI (E-10): sc-271487. Western blot analysis of Annexin XI expression in NIH/3T3 (A) and MOLT-4 (B) nuclear extracts and 3T3-L1 (C), C3H/10T1/2 (D), WI-38 (E) and SUP-T1 (F) whole cell lysates.



Annexin XI (E-10): sc-271487. Immunofluorescence staining of formalin-fixed Hep G2 cells showing nuclear localization (A). Immunoperoxidase staining of formalin fixed, paraffin-embedded human urinary bladder tissue showing nuclear and cytoplasmic staining of urothelial cells (B).

RESEARCH USE

For research use only, not for use in diagnostic procedures.

PROTOCOLS

See our web site at www.scbt.com for detailed protocols and support products.