

follistatin (D-12): sc-271502

BACKGROUND

Follistatin is a high affinity binding protein of Activin originally isolated for their role in regulating the release of follicle-stimulating hormone (FSH). Follistatin forms a group of interrelated factors with activins and inhibins, members of the transforming growth factor β (TGF β) superfamily. Activin, follistatin and Activin receptors are expressed in many tissues where they function as autocrine/paracrine regulators of a variety of physiological processes including reproduction. Follistatin is an important regulator of pituitary FSH secretion.

REFERENCES

1. Shimasaki, S., et al. 1998. Primary structure of the human follistatin precursor and its genomic organization. *Proc. Natl. Acad. Sci. USA* 85: 4218-4242.
2. Keutmann, H.T., et al. 2004. The role of follistatin domains in follistatin biological action. *Mol. Endocrinol.* 18: 228-240.
3. Hurwitz, J.M., et al. 2004. Inhibins, activins, and follistatin in the aging female and male. *Semin. Reprod. Med.* 22: 209-217.
4. Schneyer, A., et al. 2004. Differential actions of follistatin and follistatin-like 3. *Mol. Cell. Endocrinol.* 225: 25-28.
5. Bilezikjian, L.M., et al. 2004. Autocrine/paracrine regulation of pituitary function by Activin, Inhibin and follistatin. *Mol. Cell. Endocrinol.* 225: 29-36.
6. Muttukrishna, S., et al. 2004. Activin and follistatin in female reproduction. *Mol. Cell. Endocrinol.* 225: 45-56.
7. de Kretser, D.M., et al. 2004. The role of Activin, follistatin and inhibin in testicular physiology. *Mol. Cell. Endocrinol.* 225: 57-64.
8. Jones, K.L., et al. 2004. Activin A and follistatin in systemic inflammation. *Mol. Cell. Endocrinol.* 225: 119-125.
9. Phillips, D.J. 2005. Activins, inhibins and follistatins in the large domestic species. *Domest. Anim. Endocrinol.* 28: 1-16.

CHROMOSOMAL LOCATION

Genetic locus: FST (human) mapping to 5q11.2; Fst (mouse) mapping to 13 D2.2.

SOURCE

follistatin (D-12) is a mouse monoclonal antibody raised against amino acids 231-344 mapping at the C-terminus of follistatin of human origin.

PRODUCT

Each vial contains 200 μ g IgG_{2a} kappa light chain in 1.0 ml of PBS with < 0.1% sodium azide and 0.1% gelatin.

STORAGE

Store at 4° C, ****DO NOT FREEZE****. Stable for one year from the date of shipment. Non-hazardous. No MSDS required.

APPLICATIONS

follistatin (D-12) is recommended for detection of follistatin isoforms 1-3 of mouse, rat and human origin by Western Blotting (starting dilution 1:100, dilution range 1:100-1:1000), immunoprecipitation [1-2 μ g per 100-500 μ g of total protein (1 ml of cell lysate)], immunofluorescence (starting dilution 1:50, dilution range 1:50-1:500) and solid phase ELISA (starting dilution 1:30, dilution range 1:30-1:3000).

Suitable for use as control antibody for follistatin siRNA (h): sc-39762, follistatin siRNA (m): sc-39763, follistatin shRNA Plasmid (h): sc-39762-SH, follistatin shRNA Plasmid (m): sc-39763-SH, follistatin shRNA (h) Lentiviral Particles: sc-39762-V and follistatin shRNA (m) Lentiviral Particles: sc-39763-V.

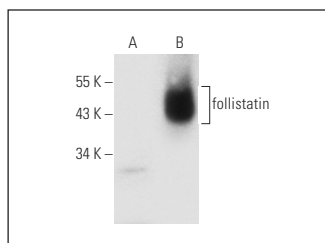
Molecular Weight of follistatin: 35-70 kDa.

Positive Controls: follistatin (h): 293T Lysate: sc-159980.

RECOMMENDED SUPPORT REAGENTS

To ensure optimal results, the following support reagents are recommended: 1) Western Blotting: use m-IgG κ BP-HRP: sc-516102 or m-IgG κ BP-HRP (Cruz Marker): sc-516102-CM (dilution range: 1:1000-1:10000), Cruz Marker™ Molecular Weight Standards: sc-2035, UltraCruz® Blocking Reagent: sc-516214 and Western Blotting Luminol Reagent: sc-2048. 2) Immunoprecipitation: use Protein A/G PLUS-Agarose: sc-2003 (0.5 ml agarose/2.0 ml). 3) Immunofluorescence: use m-IgG κ BP-FITC: sc-516140 or m-IgG κ BP-PE: sc-516141 (dilution range: 1:50-1:200) with UltraCruz® Mounting Medium: sc-24941 or UltraCruz® Hard-set Mounting Medium: sc-359850.

DATA



follistatin (D-12): sc-271502. Western blot analysis of follistatin expression in non-transfected: sc-117752 (A) and human follistatin transfected: sc-159980 (B) 293T whole cell lysates.

RESEARCH USE

For research use only, not for use in diagnostic procedures.

PROTOCOLS

See our web site at www.scbt.com for detailed protocols and support products.