

Sec6 (B-10): sc-271555

BACKGROUND

Sec6 is one of eight protein subunits composing the mammalian exocyst complex (Sec3, Sec5, Sec6, Sec8, Sec10, Sec15, Exo70, and Exo84). The mammalian exocyst complex (Sec6/8) is essential for targeting exocytic vesicles to specific docking sites on the plasma membrane. Sec6/8 regulates polarized secretion in a GTP-dependent manner. Human Sec6 maps to chromosome 5p15.33.

REFERENCES

1. Brymora, A., et al. 2001. The brain exocyst complex interacts with Ral A in a GTP-dependent manner: identification of a novel mammalian Sec3 gene and a second Sec15 gene. *J. Biol. Chem.* 276: 29792-29797.
2. Yeaman, C. 2003. Ultracentrifugation-based approaches to study regulation of Sec6/8 (exocyst) complex function during development of epithelial cell polarity. *Methods* 30: 198-206.
3. Vik-Mo, E.O., et al. 2003. Sec6 is localized to the plasma membrane of mature synaptic terminals and is transported with secretogranin II-containing vesicles. *Neuroscience* 119: 73-85.
4. Yeaman, C., et al. 2004. Mechanism of recruiting Sec6/8 (exocyst) complex to the apical junctional complex during polarization of epithelial cells. *J. Cell Sci.* 117: 559-570.
5. Hsu, S.C., et al. 2004. The exocyst complex in polarized exocytosis. *Int. Rev. Cytol.* 233: 243-265.
6. Murthy, M., et al. 2005. Sec6 mutations and the *Drosophila* exocyst complex. *J. Cell Sci.* 118: 1139-1150.
7. Sivaram, M.V., et al. 2005. Dimerization of the exocyst protein Sec6p and its interaction with the t-SNARE Sec9p. *Biochemistry* 44: 6302-6311.
8. Beronja, S., et al. 2005. Essential function of *Drosophila* Sec6 in apical exocytosis of epithelial photoreceptor cells. *J. Cell Biol.* 169: 635-646.
9. Inoue, M., et al. 2006. Compartmentalization of the exocyst complex in lipid rafts controls Glut4 vesicle tethering. *Mol. Biol. Cell* 17: 2303-2311.

CHROMOSOMAL LOCATION

Genetic locus: EXOC3 (human) mapping to 5p15.33; Exoc3 (mouse) mapping to 13 C1.

SOURCE

Sec6 (B-10) is a mouse monoclonal antibody raised against amino acids 41-270 mapping near the N-terminus of Sec6 of human origin.

PRODUCT

Each vial contains 200 µg IgG₁ kappa light chain in 1.0 ml of PBS with < 0.1% sodium azide and 0.1% gelatin.

STORAGE

Store at 4° C, ****DO NOT FREEZE****. Stable for one year from the date of shipment. Non-hazardous. No MSDS required.

APPLICATIONS

Sec6 (B-10) is recommended for detection of Sec6 of mouse, rat and human origin by Western Blotting (starting dilution 1:100, dilution range 1:100-1:1000), immunoprecipitation [1-2 µg per 100-500 µg of total protein (1 ml of cell lysate)], immunofluorescence (starting dilution 1:50, dilution range 1:50-1:500) and solid phase ELISA (starting dilution 1:30, dilution range 1:30-1:3000).

Sec6 (B-10) is also recommended for detection of Sec6 in additional species, including canine.

Suitable for use as control antibody for Sec6 siRNA (h): sc-106816, Sec6 siRNA (m): sc-153317, Sec6 shRNA Plasmid (h): sc-106816-SH, Sec6 shRNA Plasmid (m): sc-153317-SH, Sec6 shRNA (h) Lentiviral Particles: sc-106816-V and Sec6 shRNA (m) Lentiviral Particles: sc-153317-V.

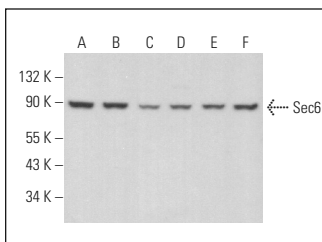
Molecular Weight of Sec6: 87 kDa.

Positive Controls: MDCK cell lysate: sc-2252, Caki-1 cell lysate: sc-2224 or NIH/3T3 whole cell lysate: sc-2210.

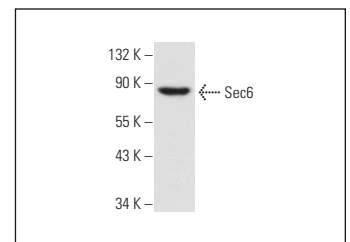
RECOMMENDED SUPPORT REAGENTS

To ensure optimal results, the following support reagents are recommended: 1) Western Blotting: use m-IgGκ BP-HRP: sc-516102 or m-IgGκ BP-HRP (Cruz Marker): sc-516102-CM (dilution range: 1:1000-1:10000), Cruz Marker™ Molecular Weight Standards: sc-2035, UltraCruz® Blocking Reagent: sc-516214 and Western Blotting Luminol Reagent: sc-2048. 2) Immunoprecipitation: use Protein A/G PLUS-Agarose: sc-2003 (0.5 ml agarose/2.0 ml). 3) Immunofluorescence: use m-IgGκ BP-FITC: sc-516140 or m-IgGκ BP-PE: sc-516141 (dilution range: 1:50-1:200) with UltraCruz® Mounting Medium: sc-24941 or UltraCruz® Hard-set Mounting Medium: sc-359850.

DATA



Sec6 (B-10): sc-271555. Western blot analysis of Sec6 expression in Caki-1 (A), ARPE-19 (B), NIH/3T3 (C), Neuro-2A (D), RPE-J (E) and C6 (F) whole cell lysates.



Sec6 (B-10): sc-271555. Western blot analysis of Sec6 expression in MDCK whole cell lysate.

RESEARCH USE

For research use only, not for use in diagnostic procedures.

PROTOCOLS

See our web site at www.scbt.com for detailed protocols and support products.