

Tastin (D-2): sc-271715

BACKGROUND

Tastin (trophinin associated protein), also known as TROAP, is essential for centrosome integrity and proper bipolar organization of spindle assembly during mitosis. It is expressed at high levels in bone marrow, testis, and thymus, localizing to the cytoplasm and associating with microtubules, the mitotic spindle and centrosomes. Tastin expression peaks in the cell during the G₂/M phase and declines after the cell divides. Cells overexpressing Tastin form monopolar spindles, while cells depleted of Tastin form multipolar spindles. Tastin binds directly to the dynein light chain (Dynein LC or Tctex-1) and γ Tubulin, further supporting its role in spindle assembly and cell proliferation. In addition, Tastin can interact with and form a complex with bystin and trophinin, facilitating cell adhesion and, in particular, embryo implantation.

REFERENCES

1. Fukuda, M.N., et al. 1995. Trophinin and Tastin, a novel cell adhesion molecule complex with potential involvement in embryo implantation. *Genes Dev.* 9: 1199-1210.
2. Fukuda, M.N. 1996. Molecular basis of embryo implantation. *Keio J. Med.* 45: 37-43.
3. Fukuda, M.N., et al. 1999. Trophinin, Tastin, and bystin: a complex mediating unique attachment between trophoblastic and endometrial epithelial cells at their respective apical cell membranes. *Semin. Reprod. Endocrinol.* 17: 229-234.

CHROMOSOMAL LOCATION

Genetic locus: TROAP (human) mapping to 12q13.12; Troap (mouse) mapping to 15 F1.

SOURCE

Tastin (D-2) is a mouse monoclonal antibody specific for an epitope mapping between amino acids 73-107 within an internal region of Tastin of human origin.

PRODUCT

Each vial contains 200 μ g IgG_{2a} kappa light chain in 1.0 ml of PBS with < 0.1% sodium azide and 0.1% gelatin.

Tastin (D-2) is available conjugated to agarose (sc-271715 AC), 500 μ g/0.25 ml agarose in 1 ml, for IP; to HRP (sc-271715 HRP), 200 μ g/ml, for WB, IHC(P) and ELISA; to either phycoerythrin (sc-271715 PE), fluorescein (sc-271715 FITC), Alexa Fluor[®] 488 (sc-271715 AF488), Alexa Fluor[®] 546 (sc-271715 AF546), Alexa Fluor[®] 594 (sc-271715 AF594) or Alexa Fluor[®] 647 (sc-271715 AF647), 200 μ g/ml, for WB (RGB), IF, IHC(P) and FCM; and to either Alexa Fluor[®] 680 (sc-271715 AF680) or Alexa Fluor[®] 790 (sc-271715 AF790), 200 μ g/ml, for Near-Infrared (NIR) WB, IF and FCM.

Blocking peptide available for competition studies, sc-271715 P, (100 μ g peptide in 0.5 ml PBS containing < 0.1% sodium azide and 0.2% stabilizer protein).

Alexa Fluor[®] is a trademark of Molecular Probes, Inc., Oregon, USA

APPLICATIONS

Tastin (D-2) is recommended for detection of Tastin of mouse, rat and human origin by Western Blotting (starting dilution 1:100, dilution range 1:100-1:1000), immunoprecipitation [1-2 μ g per 100-500 μ g of total protein (1 ml of cell lysate)], immunofluorescence (starting dilution 1:50, dilution range 1:50-1:500) and solid phase ELISA (starting dilution 1:30, dilution range 1:30-1:3000).

Suitable for use as control antibody for Tastin siRNA (h): sc-63107, Tastin siRNA (m): sc-63108, Tastin shRNA Plasmid (h): sc-63107-SH, Tastin shRNA Plasmid (m): sc-63108-SH, Tastin shRNA (h) Lentiviral Particles: sc-63107-V and Tastin shRNA (m) Lentiviral Particles: sc-63108-V.

Molecular Weight (predicted) of Tastin: 84 kDa.

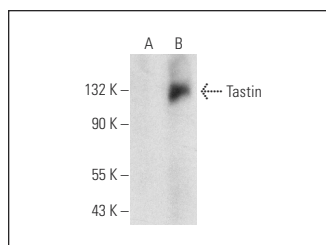
Molecular Weight (observed) of Tastin: 99-121 kDa.

Positive Controls: SW480 cell lysate: sc-2219 or Tastin (h): 293T Lysate: sc-115239.

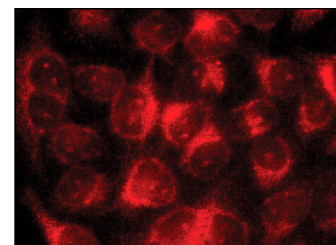
RECOMMENDED SUPPORT REAGENTS

To ensure optimal results, the following support reagents are recommended: 1) Western Blotting: use m-IgG κ BP-HRP: sc-516102 or m-IgG κ BP-HRP (Cruz Marker): sc-516102-CM (dilution range: 1:1000-1:10000), Cruz Marker[™] Molecular Weight Standards: sc-2035, UltraCruz[®] Blocking Reagent: sc-516214 and Western Blotting Luminol Reagent: sc-2048. 2) Immunoprecipitation: use Protein A/G PLUS-Agarose: sc-2003 (0.5 ml agarose/2.0 ml). 3) Immunofluorescence: use m-IgG κ BP-FITC: sc-516140 or m-IgG κ BP-PE: sc-516141 (dilution range: 1:50-1:200) with UltraCruz[®] Mounting Medium: sc-24941 or UltraCruz[®] Hard-set Mounting Medium: sc-359850.

DATA



Tastin (D-2): sc-271715. Western blot analysis of Tastin expression in non-transfected: sc-117752 (A) and human Tastin transfected: sc-115239 (B) 293T whole cell lysates.



Tastin (D-2): sc-271715. Immunofluorescence staining of methanol-fixed HeLa cells showing cytoplasmic localization.

STORAGE

Store at 4° C, **DO NOT FREEZE**. Stable for one year from the date of shipment. Non-hazardous. No MSDS required.

RESEARCH USE

For research use only, not for use in diagnostic procedures.