

EKLF (V-17): sc-27192

BACKGROUND

The Krüppel-type zinc finger transcription factors comprise a conserved family of DNA binding proteins that are important in developmental regulation. The Krüppel zinc finger transcription factor was initially identified in *Drosophila* as a segmentation gene. Krüppel-like factors that have been characterized in mammals include EKLF, LKLF and GKLF (6-8). EKLF is expressed principally in erythroid tissues, and LKLF expression is limited to the lung. GKLF is found predominantly in gut and has been shown to be expressed during growth arrest.

REFERENCES

- Schuh, R., et al. 1986. A conserved family of nuclear proteins containing structural elements of the finger protein encoded by Krüppel, a *Drosophila* segmentation gene. *Cell* 47: 1025-1032.
- Chavrier, P., et al. 1988. Characterization of a mouse multigene family that encodes zinc finger structures. *Mol. Cell. Biol.* 8: 1319-1326.
- Ruppert, J.M., et al. 1988. The GLI-Krüppel family of human genes. *Mol. Cell. Biol.* 8: 3104-3113.
- Ollo, R., et al. 1987. *Drosophila* Krüppel gene product produced in a baculovirus expression system is a nuclear phosphoprotein that binds to DNA. *Proc. Natl. Acad. Sci. USA* 84: 5700-5704.
- Bray, P., et al. 1991. Characterization and mapping of human genes encoding zinc finger proteins. *Proc. Natl. Acad. Sci. USA* 88: 9563-9567.
- Anderson, K.P., et al. 1995. Isolation of a gene encoding a functional zinc finger protein homologous to erythroid Krüppel-like factor: identification of a new multigene family. *Mol. Cell. Biol.* 15: 5957-5965.
- Bieker, J.J. 1996. Isolation, genomic structure, and expression of human erythroid Krüppel-like factor (EKLF). *DNA Cell Biol.* 15: 347-352.
- Shields, J.M., et al. 1996. Identification and characterization of a gene encoding a gut-enriched Krüppel-like factor expressed during growth arrest. *J. Biol. Chem.* 271: 20009-20017.

CHROMOSOMAL LOCATION

Genetic locus: KLF1 (human) mapping to 19p13.2.

SOURCE

EKLF (V-17) is an affinity purified goat polyclonal antibody raised against a peptide mapping within an internal region of EKLF of human origin.

PRODUCT

Each vial contains 200 µg IgG in 1.0 ml of PBS with < 0.1% sodium azide and 0.1% gelatin.

Blocking peptide available for competition studies, sc-27192 P, (100 µg peptide in 0.5 ml PBS containing < 0.1% sodium azide and 0.2% BSA).

STORAGE

Store at 4° C, ****DO NOT FREEZE****. Stable for one year from the date of shipment. Non-hazardous. No MSDS required.

APPLICATIONS

EKLF (V-17) is recommended for detection of EKLF of human origin by Western Blotting (starting dilution 1:200, dilution range 1:100-1:1000), immunoprecipitation [1-2 µg per 100-500 µg of total protein (1 ml of cell lysate)], immunofluorescence (starting dilution 1:50, dilution range 1:50-1:500) and solid phase ELISA (starting dilution 1:30, dilution range 1:30-1:3000).

Suitable for use as control antibody for EKLF siRNA (h): sc-37831, EKLF shRNA Plasmid (h): sc-37831-SH and EKLF shRNA (h) Lentiviral Particles: sc-37831-V.

Molecular Weight (predicted) of EKLF: 33 kDa.

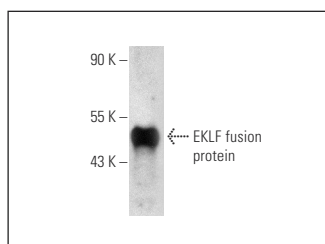
Molecular Weight (observed) of EKLF: 38 kDa.

Positive Controls: K-562 whole cell lysate: sc-2203.

RECOMMENDED SECONDARY REAGENTS

To ensure optimal results, the following support (secondary) reagents are recommended: 1) Western Blotting: use donkey anti-goat IgG-HRP: sc-2020 (dilution range: 1:2000-1:100,000) or Cruz Marker™ compatible donkey anti-goat IgG-HRP: sc-2033 (dilution range: 1:2000-1:5000), Cruz Marker™ Molecular Weight Standards: sc-2035, TBS Blotto A Blocking Reagent: sc-2333 and Western Blotting Luminol Reagent: sc-2048. 2) Immunoprecipitation: use Protein A/G PLUS-Agarose: sc-2003 (0.5 ml agarose/2.0 ml). 3) Immunofluorescence: use donkey anti-goat IgG-FITC: sc-2024 (dilution range: 1:100-1:400) or donkey anti-goat IgG-TR: sc-2783 (dilution range: 1:100-1:400) with UltraCruz™ Mounting Medium: sc-24941.

DATA



EKLF (V-17): sc-27192. Western blot analysis of human recombinant EKLF fusion protein.

RESEARCH USE

For research use only, not for use in diagnostic procedures.



Try **GKLF/EKLF/LKLF (F-8): sc-166238**, our highly recommended monoclonal alternative to EKLF (V-17). Also, for AC, HRP, FITC, PE, Alexa Fluor® 488 and Alexa Fluor® 647 conjugates, see **GKLF/EKLF/LKLF (F-8): sc-166238**.