

GPR8 (V-12): sc-27209

BACKGROUND

The two G protein-coupled receptors GPR7 and GPR8 display high similarity to each other. They both show high expression in brain and in particular in hypothalamus, and have been characterized as receptors for neuropeptide W (NPW) and neuropeptide B (NPB). In response to NPW and NPB, they play a role in the regulation of feeding behavior. GPR7 deficient mice develop an adult-onset obese phenotype that progressively worsens with age and is exacerbated when fed a high-fat diet. The genes encoding human GPR7 and GPR8 map to chromosomes 8q11.23 and 20q13.33, respectively.

REFERENCES

1. O'Dowd, B.F., Scheideler, M.A., Nguyen, T., Cheng, R., Ramussen, J.S., Marchese, A., Zastawny, R., Heng, H.H., Tsui, L.C. and Shi, X. 1995. The cloning and chromosomal mapping of two novel human opioid-somatostatin-like receptor genes, GPR7 and GPR8, expressed in discrete areas of the brain. *Genomics* 28: 84-91.
2. Baker, J.R., Cardinal, K., Bober, C., Taylor, M.M. and Samson, W.K. 2003. Neuropeptide W acts in brain to control prolactin, corticosterone, and growth hormone release. *Endocrinology* 144: 2816-2821.
3. Ishii, M., Fei, H. and Friedman, J.M. 2003. Targeted disruption of GPR7, the endogenous receptor for neuropeptides B and W, leads to metabolic defects and adult-onset obesity. *Proc. Natl. Acad. Sci. USA* 100: 10540-10545.
4. Mondal, M.S., Yamaguchi, H., Date, Y., Shimbara, T., Toshinai, K., Shimomura, Y., Mori, M. and Nakazato, M. 2003. A role for neuropeptide W in the regulation of feeding behavior. *Endocrinology* 144: 4729-4733.
5. Tanaka, H., Yoshida, T., Miyamoto, N., Motoike, T., Kurosu, H., Shibata, K., Yamanaka, A., Williams, S.C., Richardson, J.A., Tsujino, N., Garry, M.G., Lerner, M.R., King, D.S., O'Dowd, B.F., Sakurai, T. and Yanagisawa, M. 2003. Characterization of a family of endogenous neuropeptide ligands for the G protein-coupled receptors GPR7 and GPR8. *Proc. Natl. Acad. Sci. USA* 100: 6251-6256.

CHROMOSOMAL LOCATION

Genetic locus: NPBWR2 (human) mapping to 20q13.33.

SOURCE

GPR8 (V-12) is an affinity purified goat polyclonal antibody raised against a peptide mapping within an extracellular domain of GPR8 of human origin.

PRODUCT

Each vial contains 200 µg IgG in 1.0 ml of PBS with < 0.1% sodium azide and 0.1% gelatin.

Blocking peptide available for competition studies, sc-27209 P, (100 µg peptide in 0.5 ml PBS containing < 0.1% sodium azide and 0.2% BSA).

RESEARCH USE

For research use only, not for use in diagnostic procedures.

APPLICATIONS

GPR8 (V-12) is recommended for detection of GPR8 of human origin by Western Blotting (starting dilution 1:200, dilution range 1:100-1:1000), immunoprecipitation [1-2 µg per 100-500 µg of total protein (1 ml of cell lysate)], immunofluorescence (starting dilution 1:50, dilution range 1:50-1:500) and solid phase ELISA (starting dilution 1:30, dilution range 1:30-1:3000).

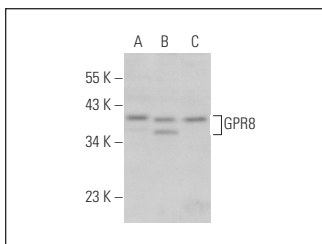
Suitable for use as control antibody for GPR8 siRNA (h): sc-105410, GPR8 shRNA Plasmid (h): sc-105410-SH and GPR8 shRNA (h) Lentiviral Particles: sc-105410-V.

Positive Controls: IMR-32 cell lysate: sc-2409, Hep G2 cell lysate: sc-2227 or HeLa whole cell lysate: sc-2200.

RECOMMENDED SECONDARY REAGENTS

To ensure optimal results, the following support (secondary) reagents are recommended: 1) Western Blotting: use donkey anti-goat IgG-HRP: sc-2020 (dilution range: 1:2000-1:100,000) or Cruz Marker™ compatible donkey anti-goat IgG-HRP: sc-2033 (dilution range: 1:2000-1:5000), Cruz Marker™ Molecular Weight Standards: sc-2035, TBS Blotto A Blocking Reagent: sc-2333 and Western Blotting Luminol Reagent: sc-2048. 2) Immunoprecipitation: use Protein A/G PLUS-Agarose: sc-2003 (0.5 ml agarose/2.0 ml). 3) Immunofluorescence: use donkey anti-goat IgG-FITC: sc-2024 (dilution range: 1:100-1:400) or donkey anti-goat IgG-TR: sc-2783 (dilution range: 1:100-1:400) with UltraCruz™ Mounting Medium: sc-24941.

DATA



GPR8 (V-12): sc-27209. Western blot analysis of GPR8 expression in IMR-32 (A), HeLa (B) and Hep G2 (C) whole cell lysates.

STORAGE

Store at 4° C, ****DO NOT FREEZE****. Stable for one year from the date of shipment. Non-hazardous. No MSDS required.

PROTOCOLS

See our web site at www.scbt.com or our catalog for detailed protocols and support products.