

ASH2L (F-19): sc-27283

BACKGROUND

The human ASH2L gene encodes a 628 amino acid protein known as ASH2L1, or isoform 1, which contains a nuclear localization signal and PHD finger motif, suggesting that the gene product functions as a transcription regulator. Alternative splicing results in a shorter isoform 2, designated ASH2L2, which is missing the first 94 amino acid residues found in ASH2L1. Human ASH2L proteins are 60% homologous to *Drosophila* ash2, which positively regulates expression of certain genes in early development and contain similar, but not identical, domains, including a zinc finger motif. ASH2L is highly expressed in fetal liver, testis and leukemia cell lines with erythroid and megakaryocytic potential, such as K-562, HeL and Dami. Differentiation inducers (e.g. phorbol ester and hemin) cause different expression patterns in these cells lines, suggesting that ASH2L plays a role in hematopoiesis and is associated with particular types of leukemia.

CHROMOSOMAL LOCATION

Genetic locus: ASH2L (human) mapping to 8p11.23; Ash2l (mouse) mapping to 8 A2.

SOURCE

ASH2L (F-19) is an affinity purified goat polyclonal antibody raised against a peptide mapping near the C-terminus of ASH2L of human origin.

PRODUCT

Each vial contains 200 µg IgG in 1.0 ml of PBS with < 0.1% sodium azide and 0.1% gelatin. Also available as TransCruz reagent for Gel Supershift and ChIP applications, sc-27283 X, 200 µg/0.1 ml.

Blocking peptide available for competition studies, sc-27283 P, (100 µg peptide in 0.5 ml PBS containing < 0.1% sodium azide and 0.2% BSA).

APPLICATIONS

ASH2L (F-19) is recommended for detection of ASH2L of mouse, rat and human origin by Western Blotting (starting dilution 1:200, dilution range 1:100-1:1000), immunoprecipitation [1-2 µg per 100-500 µg of total protein (1 ml of cell lysate)], immunofluorescence (starting dilution 1:50, dilution range 1:50-1:500), immunohistochemistry (including paraffin-embedded sections) (starting dilution 1:50, dilution range 1:50-1:500) and solid phase ELISA (starting dilution 1:30, dilution range 1:30-1:3000).

ASH2L (F-19) is also recommended for detection of ASH2L in additional species, including equine, canine, bovine, porcine and avian.

Suitable for use as control antibody for ASH2L siRNA (h): sc-43556, ASH2L siRNA (m): sc-77338, ASH2L shRNA Plasmid (h): sc-43556-SH, ASH2L shRNA Plasmid (m): sc-77338-SH, ASH2L shRNA (h) Lentiviral Particles: sc-43556-V and ASH2L shRNA (m) Lentiviral Particles: sc-77338-V.

ASH2L (F-19) X TransCruz antibody is recommended for Gel Supershift and ChIP applications.

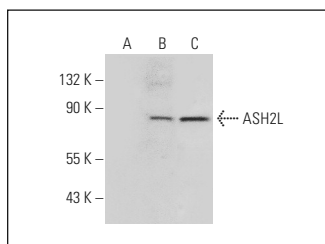
Molecular Weight of ASH2L: 80 kDa.

Positive Controls: NIH/3T3 whole cell lysate: sc-2210, HeLa whole cell lysate: sc-2200 or ASH2L (m): 293T Lysate: sc-118586.

RECOMMENDED SECONDARY REAGENTS

To ensure optimal results, the following support (secondary) reagents are recommended: 1) Western Blotting: use donkey anti-goat IgG-HRP: sc-2020 (dilution range: 1:2000-1:100,000) or Cruz Marker™ compatible donkey anti-goat IgG-HRP: sc-2033 (dilution range: 1:2000-1:5000), Cruz Marker™ Molecular Weight Standards: sc-2035, TBS Blotto A Blocking Reagent: sc-2333 and Western Blotting Luminol Reagent: sc-2048. 2) Immunoprecipitation: use Protein A/G PLUS-Agarose: sc-2003 (0.5 ml agarose/2.0 ml). 3) Immunofluorescence: use donkey anti-goat IgG-FITC: sc-2024 (dilution range: 1:100-1:400) or donkey anti-goat IgG-TR: sc-2783 (dilution range: 1:100-1:400) with UltraCruz™ Mounting Medium: sc-24941. 4) Immunohistochemistry: use ImmunoCruz™: sc-2053 or ABC: sc-2023 goat IgG Staining Systems.

DATA



ASH2L (F-19): sc-27283. Western blot analysis of ASH2L expression in non-transfected: sc-117750 (A), mouse ASH2L transfected: sc-118586 (B) and NIH/3T3 (C) whole cell lysates.



ASH2L (F-19): sc-27283. Immunoperoxidase staining of formalin fixed, paraffin-embedded human prostate tissue showing nuclear staining of glandular cells.

STORAGE

Store at 4° C, ****DO NOT FREEZE****. Stable for one year from the date of shipment. Non-hazardous. No MSDS required.

RESEARCH USE

For research use only, not for use in diagnostic procedures.

PROTOCOLS

See our web site at www.scbt.com or our catalog for detailed protocols and support products.

MONOS
Satisfaction
Guaranteed

Try **ASH2L (2046D2a): sc-81184**, our highly recommended monoclonal alternative to ASH2L (F-19).