

TIMP-3 (G-16): sc-27286

BACKGROUND

TIMP-1, TIMP-2, TIMP-3 and TIMP-4 (four tissue inhibitor of metalloproteinases-1, -2, -3 and -4) complex with metalloproteinases such as collagenases, gelatinases and stromelysins, resulting in irreversible inactivation of the metalloproteinase. TIMP-1 was found to be identical to EPA (erythroid-potentiation activity). Parathyroid hormone has been shown to be a regulator of TIMP-2 in osteoblastic cells. TIMP-3 may be involved in regulating trophoblastic invasion of the uterus as well as in regulating remodeling of the extracellular matrix during the folding of epithelia, and in the formation, branching and expansion of epithelial tubes. TIMP-4 is most highly expressed in heart and low levels of TIMP-4 are expressed in liver, brain, lung, thymus and spleen.

CHROMOSOMAL LOCATION

Genetic locus: TIMP3 (human) mapping to 22q12.3; Timp3 (mouse) mapping to 10 C1.

SOURCE

TIMP-3 (G-16) is an affinity purified goat polyclonal antibody raised against a peptide mapping at the C-terminus of TIMP-3 of human origin.

PRODUCT

Each vial contains 200 µg IgG in 1.0 ml of PBS with < 0.1% sodium azide and 0.1% gelatin.

Blocking peptide available for competition studies, sc-27286 P, (100 µg peptide in 0.5 ml PBS containing < 0.1% sodium azide and 0.2% BSA).

STORAGE

Store at 4° C, ****DO NOT FREEZE****. Stable for one year from the date of shipment. Non-hazardous. No MSDS required.

APPLICATIONS

TIMP-3 (G-16) is recommended for detection of precursor and mature TIMP-3 of mouse, rat and human origin by Western Blotting (starting dilution 1:200, dilution range 1:100-1:1000), immunofluorescence (starting dilution 1:50, dilution range 1:50-1:500), immunohistochemistry (including paraffin-embedded sections) (starting dilution 1:50, dilution range 1:50-1:500) and solid phase ELISA (starting dilution 1:30, dilution range 1:30-1:3000).

TIMP-3 (G-16) is also recommended for detection of precursor and mature TIMP-3 in additional species, including equine, canine, bovine, porcine and avian.

Suitable for use as control antibody for TIMP-3 siRNA (h): sc-37022, TIMP-3 siRNA (m): sc-37023, TIMP-3 shRNA Plasmid (h): sc-37022-SH, TIMP-3 shRNA Plasmid (m): sc-37023-SH, TIMP-3 shRNA (h) Lentiviral Particles: sc-37022-V and TIMP-3 shRNA (m) Lentiviral Particles: sc-37023-V.

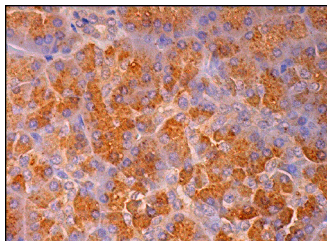
Molecular Weight of TIMP-3: 30 kDa.

Positive Controls: mouse placenta extract: sc-364247.

RECOMMENDED SECONDARY REAGENTS

To ensure optimal results, the following support (secondary) reagents are recommended: 1) Western Blotting: use donkey anti-goat IgG-HRP: sc-2020 (dilution range: 1:2000-1:100,000) or Cruz Marker™ compatible donkey anti-goat IgG-HRP: sc-2033 (dilution range: 1:2000-1:5000), Cruz Marker™ Molecular Weight Standards: sc-2035, TBS Blotto A Blocking Reagent: sc-2333 and Western Blotting Luminol Reagent: sc-2048. 2) Immunofluorescence: use donkey anti-goat IgG-FITC: sc-2024 (dilution range: 1:100-1:400) or donkey anti-goat IgG-TR: sc-2783 (dilution range: 1:100-1:400) with UltraCruz™ Mounting Medium: sc-24941. 3) Immunohistochemistry: use ImmunoCruz™: sc-2053 or ABC: sc-2023 goat IgG Staining Systems.

DATA



TIMP-3 (G-16): sc-27286. Immunoperoxidase staining of formalin fixed, paraffin-embedded human pancreas tissue showing cytoplasmic staining of exocrine glandular cells.

RESEARCH USE

For research use only, not for use in diagnostic procedures.

PROTOCOLS

See our web site at www.scbt.com or our catalog for detailed protocols and support products.

MONOS
Satisfaction
Guaranteed

Try **TIMP-3 (B-2): sc-373839** or **TIMP-3 (E-2): sc-373842**, our highly recommended monoclonal alternatives to TIMP-3 (G-16).