

Tollip (N-17): sc-27315

BACKGROUND

Tollip (Toll-interacting protein) serves as a suppressor of innate immunity signaling and links the serine/threonine kinase IRAK to the IL-1 receptor complex upon receptor activation. Overexpression of Tollip in HEK293 cells inhibits NF κ B activation in response to TLR2 and TLR4 signaling. Negative regulation of TLR signaling by Tollip may limit the production of proinflammatory mediators during inflammation and infection. Tollip forms a complex with Tom1 to regulate endosomal trafficking of ubiquitinated proteins. The Tollip protein shows ubiquitous expression in mouse.

CHROMOSOMAL LOCATION

Genetic locus: TOLLIP (human) mapping to 11p15.5; Tollip (mouse) mapping to 7 F5.

SOURCE

Tollip (N-17) is an affinity purified goat polyclonal antibody raised against a peptide mapping at the N-terminus of Tollip of human origin.

PRODUCT

Each vial contains 200 μ g IgG in 1.0 ml of PBS with < 0.1% sodium azide and 0.1% gelatin.

Blocking peptide available for competition studies, sc-27315 P, (100 μ g peptide in 0.5 ml PBS containing < 0.1% sodium azide and 0.2% BSA).

STORAGE

Store at 4° C, ****DO NOT FREEZE****. Stable for one year from the date of shipment. Non-hazardous. No MSDS required.

PROTOCOLS

See our web site at www.scbt.com or our catalog for detailed protocols and support products.

APPLICATIONS

Tollip (N-17) is recommended for detection of Tollip of mouse and human origin by Western Blotting (starting dilution 1:200, dilution range 1:100-1:1000), immunoprecipitation [1-2 μ g per 100-500 μ g of total protein (1 ml of cell lysate)], immunofluorescence (starting dilution 1:50, dilution range 1:50-1:500), immunohistochemistry (including paraffin-embedded sections) (starting dilution 1:50, dilution range 1:50-1:500) and solid phase ELISA (starting dilution 1:30, dilution range 1:30-1:3000).

Tollip (N-17) is also recommended for detection of Tollip in additional species, including canine, bovine and avian.

Suitable for use as control antibody for Tollip siRNA (h): sc-63332, Tollip siRNA (m): sc-63333, Tollip shRNA Plasmid (h): sc-63332-SH, Tollip shRNA Plasmid (m): sc-63333-SH, Tollip shRNA (h) Lentiviral Particles: sc-63332-V and Tollip shRNA (m) Lentiviral Particles: sc-63333-V.

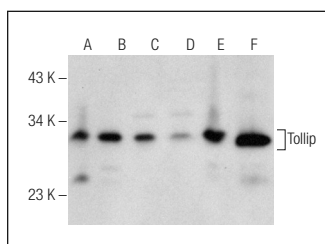
Molecular Weight of Tollip: 28 kDa.

Positive Controls: Jurkat whole cell lysate: sc-2204, Hep G2 cell lysate: sc-2227 or SK-N-MC cell lysate: sc-2237.

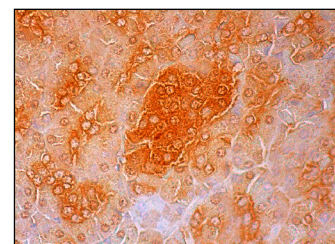
RECOMMENDED SECONDARY REAGENTS

To ensure optimal results, the following support (secondary) reagents are recommended: 1) Western Blotting: use donkey anti-goat IgG-HRP: sc-2020 (dilution range: 1:2000-1:100,000) or Cruz Marker™ compatible donkey anti-goat IgG-HRP: sc-2033 (dilution range: 1:2000-1:5000), Cruz Marker™ Molecular Weight Standards: sc-2035, TBS Blotto A Blocking Reagent: sc-2333 and Western Blotting Luminol Reagent: sc-2048. 2) Immunoprecipitation: use Protein A/G PLUS-Agarose: sc-2003 (0.5 ml agarose/2.0 ml). 3) Immunofluorescence: use donkey anti-goat IgG-FITC: sc-2024 (dilution range: 1:100-1:400) or donkey anti-goat IgG-TR: sc-2783 (dilution range: 1:100-1:400) with UltraCruz™ Mounting Medium: sc-24941. 4) Immunohistochemistry: use ImmunoCruz™: sc-2053 or ABC: sc-2023 goat IgG Staining Systems.

DATA



Tollip (N-17): sc-27315. Western blot analysis of Tollip expression in Jurkat (A), Hep G2 (B), SK-N-MC (C), HeLa (D) and LNCaP (E) whole cell lysates and mouse brain tissue extract (F).



Tollip (N-17): sc-27315. Immunoperoxidase staining of formalin fixed, paraffin-embedded human pancreas tissue showing cytoplasmic and nuclear staining of exocrine glandular cells and Islets of Langerhans.

RESEARCH USE

For research use only, not for use in diagnostic procedures.

MONOS
Satisfaction
Guaranteed

Try **Tollip (k1B17): sc-136152**, our highly recommended monoclonal alternative to Tollip (N-17).