

# Rab 34 (N-16): sc-27442

## BACKGROUND

The Ras-related superfamily of guanine nucleotide binding proteins, which includes the R-Ras, Rap, Ral/Rec and Rho/Rab superfamilies, exhibit 30-60% homology with Ras p21. Accumulating data suggests an important role for Rab proteins, either in endocytosis or in biosynthetic protein transport. The transport of newly synthesized proteins from the endoplasmic reticulum to various stacks of the Golgi complex and to secretory vesicles involves at each stage the movement of carrier vesicles, a process that appears to involve Rab protein function. The possibility that Rab proteins might also direct the exocytosis from secretory vesicles to the plasma membrane is supported by the observation that in yeast, the SEC4 protein, which is 40% homologous to Rab proteins, is associated with secretory vesicles. At least eight members of the Rab family have been identified, each of which is found at a particular stage of a membrane transport pathway.

## CHROMOSOMAL LOCATION

Genetic locus: RAB34 (human) mapping to 17q11.2; Rab34 (mouse) mapping to 11 B5.

## SOURCE

Rab 34 (N-16) is an affinity purified goat polyclonal antibody raised against a peptide mapping at the N-terminus of Rab 34 of human origin.

## PRODUCT

Each vial contains 200 µg IgG in 1.0 ml of PBS with < 0.1% sodium azide and 0.1% gelatin.

Blocking peptide available for competition studies, sc-27442 P, (100 µg peptide in 0.5 ml PBS containing < 0.1% sodium azide and 0.2% BSA).

## STORAGE

Store at 4° C, **\*\*DO NOT FREEZE\*\***. Stable for one year from the date of shipment. Non-hazardous. No MSDS required.

## APPLICATIONS

Rab 34 (N-16) is recommended for detection of Rab 34 of mouse, rat and human origin by Western Blotting (starting dilution 1:200, dilution range 1:100-1:1000), immunoprecipitation [1-2 µg per 100-500 µg of total protein (1 ml of cell lysate)], immunofluorescence (starting dilution 1:50, dilution range 1:50-1:500) and solid phase ELISA (starting dilution 1:30, dilution range 1:30-1:3000).

Rab 34 (N-16) is also recommended for detection of Rab 34 in additional species, including equine, canine, bovine and porcine.

Suitable for use as control antibody for Rab 34 siRNA (h): sc-45812, Rab 34 siRNA (m): sc-45813, Rab 34 shRNA Plasmid (h): sc-45812-SH, Rab 34 shRNA Plasmid (m): sc-45813-SH, Rab 34 shRNA (h) Lentiviral Particles: sc-45812-V and Rab 34 shRNA (m) Lentiviral Particles: sc-45813-V.

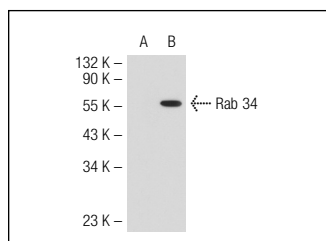
Molecular Weight of Rab 34: 32 kDa.

Positive Controls: HeLa whole cell lysate: sc-2200, mouse kidney extract: sc-2255 or Rab 34 (h2): 293T Lysate: sc-174871.

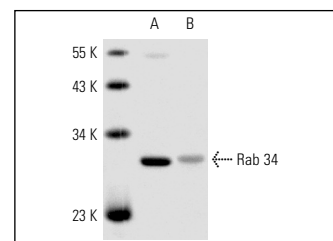
## RECOMMENDED SECONDARY REAGENTS

To ensure optimal results, the following support (secondary) reagents are recommended: 1) Western Blotting: use donkey anti-goat IgG-HRP: sc-2020 (dilution range: 1:2000-1:100,000) or Cruz Marker™ compatible donkey anti-goat IgG-HRP: sc-2033 (dilution range: 1:2000-1:5000), Cruz Marker™ Molecular Weight Standards: sc-2035, TBS Blotto A Blocking Reagent: sc-2333 and Western Blotting Luminol Reagent: sc-2048. 2) Immunoprecipitation: use Protein A/G PLUS-Agarose: sc-2003 (0.5 ml agarose/2.0 ml). 3) Immunofluorescence: use donkey anti-goat IgG-FITC: sc-2024 (dilution range: 1:100-1:400) or donkey anti-goat IgG-TR: sc-2783 (dilution range: 1:100-1:400) with UltraCruz™ Mounting Medium: sc-24941.

## DATA



Rab 34 (N-16): sc-27442. Western blot analysis of Rab 34 expression in non-transfected: sc-117752 (A) and human Rab 34 transfected: sc-174871 (B) 293T whole cell lysates.



Rab 34 (N-16): sc-27442. Western blot analysis of Rab 34 expression in HeLa whole cell lysate (A) and mouse kidney tissue extract (B).

## SELECT PRODUCT CITATIONS

- Weinkauff, M., et al. 2009. 2-D PAGE-based comparison of proteasome inhibitor bortezomib in sensitive and resistant mantle cell lymphoma. *Electrophoresis* 30: 974-986.

## RESEARCH USE

For research use only, not for use in diagnostic procedures.

## PROTOCOLS

See our web site at [www.scbt.com](http://www.scbt.com) or our catalog for detailed protocols and support products.



Try **Rab 34 (C-5): sc-376710** or **Rab 34 (E-10): sc-373976**, our highly recommended monoclonal alternatives to Rab 34 (N-16).