

Headpin (L-17): sc-27452

BACKGROUND

Headpin (hurpin, serpinB13) is a skin-specific, UV-repressible serine proteinase inhibitor (serpin) belonging to the ovalbumin serpin family. Headpin is abundant in the human keratinocyte cell line HaCaT, and in lesional keratinocytes from psoriatic skin. Headpin downregulation occurs in squamous cell carcinoma of the oral cavity and in squamous cell carcinoma cell lines of the head and neck.

REFERENCES

1. Abts, H.F., Welss, T., Mirmohammadsadegh, A., Kohrer, K., Michel, G. and Ruzicka, T. 1999. Cloning and characterization of hurpin (protease inhibitor 13): a new skin-specific, UV-repressible serine proteinase inhibitor of the ovalbumin Serpin family. *J. Mol. Biol.* 293: 29-39.
2. Spring, P., Nakashima, T., Frederick, M., Henderson, Y. and Clayman, G. 1999. Identification and cDNA cloning of Headpin, a novel differentially expressed Serpin that maps to chromosome 18q. *Biochem. Biophys. Res. Commun.* 264: 299-304.
3. Nakashima, T., Pak, S.C., Silverman, G.A., Spring, P.M., Frederick, M.J. and Clayman, G.L. 2000. Genomic cloning, mapping, structure and promoter analysis of Headpin, a Serpin which is down-regulated in head and neck cancer cells. *Biochim. Biophys. Acta* 1492: 441-446.
4. Jayakumar, A., Kang, Y., Frederick, M.J., Pak, S.C., Henderson, Y., Holton, P.R., Mitsudo, K., Silverman, G.A., AK, E.L., Bromme, D. and Clayman, G.L. 2003. Inhibition of the cysteine proteinases cathepsins K and L by the Serpin Headpin (SerpinB13): a kinetic analysis. *Arch. Biochem. Biophys.* 409: 367-374.
5. LocusLink Report (LocusID: 5275). <http://www.ncbi.nlm.nih.gov/LocusLink/>

CHROMOSOMAL LOCATION

Genetic locus: SERPINB13 (human) mapping to 18q21.33; Serpinb13 (mouse) mapping to 1 E2.1.

SOURCE

Headpin (L-17) is an affinity purified goat polyclonal antibody raised against a peptide mapping near the N-terminus of Headpin of human origin.

PRODUCT

Each vial contains 200 µg IgG in 1.0 ml of PBS with < 0.1% sodium azide and 0.1% gelatin.

Blocking peptide available for competition studies, sc-27452 P, (100 µg peptide in 0.5 ml PBS containing < 0.1% sodium azide and 0.2% BSA).

STORAGE

Store at 4° C, ****DO NOT FREEZE****. Stable for one year from the date of shipment. Non-hazardous. No MSDS required.

PROTOCOLS

See our web site at www.scbt.com or our catalog for detailed protocols and support products.

APPLICATIONS

Headpin (L-17) is recommended for detection of Headpin, isoforms 1 and 2 of mouse, rat and human origin by Western Blotting (starting dilution 1:200, dilution range 1:100-1:1000), immunofluorescence (starting dilution 1:50, dilution range 1:50-1:500), immunohistochemistry (including paraffin-embedded sections) (starting dilution 1:50, dilution range 1:50-1:500) and solid phase ELISA (starting dilution 1:30, dilution range 1:30-1:3000).

Headpin (L-17) is also recommended for detection of Headpin, isoforms 1 and 2 in additional species, including equine, canine and bovine.

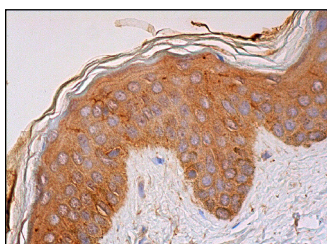
Suitable for use as control antibody for Headpin siRNA (h): sc-106889, Headpin siRNA (m): sc-145919, Headpin shRNA Plasmid (h): sc-106889-SH, Headpin shRNA Plasmid (m): sc-145919-SH, Headpin shRNA (h) Lentiviral Particles: sc-106889-V and Headpin shRNA (m) Lentiviral Particles: sc-145919-V.

Molecular Weight of Headpin: 44 kDa.

RECOMMENDED SECONDARY REAGENTS

To ensure optimal results, the following support (secondary) reagents are recommended: 1) Western Blotting: use donkey anti-goat IgG-HRP: sc-2020 (dilution range: 1:2000-1:100,000) or Cruz Marker™ compatible donkey anti-goat IgG-HRP: sc-2033 (dilution range: 1:2000-1:5000), Cruz Marker™ Molecular Weight Standards: sc-2035, TBS Blotto A Blocking Reagent: sc-2333 and Western Blotting Luminol Reagent: sc-2048. 2) Immunofluorescence: use donkey anti-goat IgG-FITC: sc-2024 (dilution range: 1:100-1:400) or donkey anti-goat IgG-TR: sc-2783 (dilution range: 1:100-1:400) with UltraCruz™ Mounting Medium: sc-24941. 3) Immunohistochemistry: use ImmunoCruz™: sc-2053 or ABC: sc-2023 goat IgG Staining Systems.

DATA



Headpin (L-17): sc-27452. Immunoperoxidase staining of formalin fixed, paraffin-embedded human skin tissue showing cytoplasmic staining of keratinocytes, Langerhans cells and melanocytes.

RESEARCH USE

For research use only, not for use in diagnostic procedures.

MONOS
Satisfaction
Guaranteed

Try **Headpin (E-1): sc-398857** or **Headpin (H-7): sc-393306**, our highly recommended monoclonal alternatives to Headpin (L-17).