

ICA69 (C-20): sc-27536

BACKGROUND

Pancreatic islet cells are clusters of endocrine cells that are scattered throughout the tissue of the pancreas and secrete Insulin and glucagon, which help the body store and use sugars. Each islet contains approximately 1,000 cells and is 50-500 μm in diameter. Islet cell autoantigen 1, also designated ICA69 or p69 protein, is an environmental trigger molecule that induces diabetic autoimmunity to Insulin producing islet cells. The human ICA1 gene maps to chromosome 7p21.3 and generates three transcript variants that encode the T cell epitope (in exon 2) that is detectable by autoreactive T cells in diabetic children. Human ICA69 transcript is abundant in pancreas, brain and heart, with lower levels of expression found in lung, liver, thyroid and kidney.

REFERENCES

- Ching, C.K. and Rhodes, J.M. 1988. Identification and partial characterization of a new pancreatic cancer-related serum glycoprotein by sodium dodecyl sulfate-polyacrylamide gel electrophoresis and lectin blotting. *Gastroenterology* 95: 137-142
- Skinner, J.R., et al. 1992. Central venous pressure in the ventilated neonate. *Arch. Dis. Child.* 67: 374-377.
- Pietro Paolo, M., et al. 1993. Islet cell autoantigen 69 kD (ICA69). Molecular cloning and characterization of a novel diabetes-associated autoantigen. *J. Clin. Invest.* 92: 359-371.
- Hirano, K., et al. 1999. A case of non-functioning malignant islet cell tumor with egg-shaped calcification. *Nippon Shokakibyo Gakkai Zasshi* 96: 189-193.
- Hochwald, S.N., et al. 2001. Laparoscopy predicts metastatic disease and spares laparotomy in selected patients with pancreatic nonfunctioning islet cell tumors. *Ann. Surg. Oncol.* 8: 249-253.
- Kumagai, N., et al. 2002. Vascularized islet-cell transplantation in miniature swine. I. Preparation of vascularized islet kidneys. *Transplantation* 74: 1223-1230.
- Friday, R.P., et al. 2003. Alternative core promoters regulate tissue-specific transcription from the autoimmune diabetes-related ICA1 (ICA69) gene locus. *J. Biol. Chem.* 278: 853-863.
- Helling, T.S. 2004. Surgical management of chronic pancreatitis and the role of islet cell autotransplantation. *Curr. surg.* 60: 463-469.
- Ito, K., et al. 2004. Localization of islet-cell hyperplasia: value of pre- and intraoperative arterial stimulation and venous sampling. *J. Hepatobiliary Pancreat. Surg.* 11: 203-206.

CHROMOSOMAL LOCATION

Genetic locus: ICA1 (human) mapping to 7p21.3, ICA1L (human) mapping to 2q33.2; Ica1 (mouse) mapping to 6 A1, Ica1l (mouse) mapping to 1 C2.

SOURCE

ICA69 (C-20) is an affinity purified goat polyclonal antibody raised against a peptide mapping near the C-terminus of ICA69 of human origin.

PRODUCT

Each vial contains 200 μg IgG in 1.0 ml of PBS with < 0.1% sodium azide and 0.1% gelatin.

Blocking peptide available for competition studies, sc-27536 P, (100 μg peptide in 0.5 ml PBS containing < 0.1% sodium azide and 0.2% BSA).

APPLICATIONS

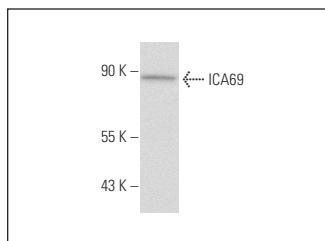
ICA69 (C-20) is recommended for detection of ICA69 and to a lesser extent, ICA1L of mouse, rat and human origin by Western Blotting (starting dilution 1:200, dilution range 1:100-1:1000), immunoprecipitation [1-2 μg per 100-500 μg of total protein (1 ml of cell lysate)], immunofluorescence (starting dilution 1:50, dilution range 1:50-1:500) and solid phase ELISA (starting dilution 1:30, dilution range 1:30-1:3000).

ICA69 (C-20) is also recommended for detection of ICA69 and to a lesser extent, ICA1L in additional species, including canine, bovine, porcine and avian.

Molecular Weight of ICA69: 69 kDa.

Positive Controls: MIA PaCa-2 cell lysate: sc-2285 or human pancreas extract: sc-363770.

DATA



ICA69 (C-20): sc-27536. Western blot analysis of ICA69 expression in MIA PaCa-2 whole cell lysate.

STORAGE

Store at 4° C, ****DO NOT FREEZE****. Stable for one year from the date of shipment. Non-hazardous. No MSDS required.

RESEARCH USE

For research use only, not for use in diagnostic procedures.

PROTOCOLS

See our web site at www.scbt.com or our catalog for detailed protocols and support products.

MONOS
Satisfaction
Guaranteed

Try **ICA69 (A-1): sc-271489** or **ICA69 (LIV3D3): sc-53362**, our highly recommended monoclonal alternatives to ICA69 (C-20).