

Pael-R (A-20): sc-27548

BACKGROUND

Pael-R (Parkin-associated endothelin receptor-like receptor), also known as GPR37 (G protein-coupled receptor 37), EDNRBL or ETBR-LP-1 (endothelin B receptor-like protein 1), is a 613 amino acid multi-pass membrane protein that belongs to the G protein-coupled receptor 1 family. Pael-R is expressed in spinal cord and brain, with lower levels found in liver, testis and placenta. When overexpressed, Pael-R causes cells to unfold and accumulate, eventually causing dopaminergic neuronal death in juvenile Parkinson disease (PDJ). Pael-R functions as an orphan receptor and also forms a complex with CHIP, HSP 70 and Parkin. The gene encoding Pael-R maps to human chromosome 7, which comprises nearly 5% of the human genome and has been linked to Osteogenesis imperfecta, Pendred syndrome and Williams-Beuren syndrome.

CHROMOSOMAL LOCATION

Genetic locus: GPR37 (human) mapping to 7q31.33; Gpr37 (mouse) mapping to 6 A3.1.

SOURCE

Pael-R (A-20) is an affinity purified goat polyclonal antibody raised against a peptide mapping within an internal region of Pael-R of human origin.

PRODUCT

Each vial contains 200 µg IgG in 1.0 ml of PBS with < 0.1% sodium azide and 0.1% gelatin.

Blocking peptide available for competition studies, sc-27548 P, (100 µg peptide in 0.5 ml PBS containing < 0.1% sodium azide and 0.2% BSA).

STORAGE

Store at 4° C, ****DO NOT FREEZE****. Stable for one year from the date of shipment. Non-hazardous. No MSDS required.

APPLICATIONS

Pael-R (A-20) is recommended for detection of Pael-R of mouse, rat and human origin by Western Blotting (starting dilution 1:200, dilution range 1:100-1:1000), immunoprecipitation [1-2 µg per 100-500 µg of total protein (1 ml of cell lysate)], immunofluorescence (starting dilution 1:50, dilution range 1:50-1:500) and solid phase ELISA (starting dilution 1:30, dilution range 1:30-1:3000).

Pael-R (A-20) is also recommended for detection of Pael-R in additional species, including equine, canine, bovine, porcine and avian.

Suitable for use as control antibody for Pael-R siRNA (h): sc-106350, Pael-R siRNA (m): sc-77374, Pael-R shRNA Plasmid (h): sc-106350-SH, Pael-R shRNA Plasmid (m): sc-77374-SH, Pael-R shRNA (h) Lentiviral Particles: sc-106350-V and Pael-R shRNA (m) Lentiviral Particles: sc-77374-V.

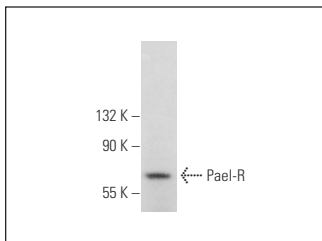
Molecular Weight of Pael-R: 67 kDa.

Positive Controls: HeLa whole cell lysate: sc-2200 or NIH/3T3 whole cell lysate: sc-2210.

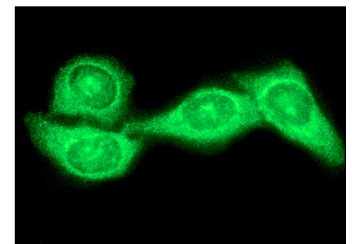
RECOMMENDED SECONDARY REAGENTS

To ensure optimal results, the following support (secondary) reagents are recommended: 1) Western Blotting: use donkey anti-goat IgG-HRP: sc-2020 (dilution range: 1:2000-1:100,000) or Cruz Marker™ compatible donkey anti-goat IgG-HRP: sc-2033 (dilution range: 1:2000-1:5000), Cruz Marker™ Molecular Weight Standards: sc-2035, TBS Blotto A Blocking Reagent: sc-2333 and Western Blotting Luminol Reagent: sc-2048. 2) Immunoprecipitation: use Protein A/G PLUS-Agarose: sc-2003 (0.5 ml agarose/2.0 ml). 3) Immunofluorescence: use donkey anti-goat IgG-FITC: sc-2024 (dilution range: 1:100-1:400) or donkey anti-goat IgG-TR: sc-2783 (dilution range: 1:100-1:400) with UltraCruz™ Mounting Medium: sc-24941.

DATA



Pael-R (A-20): sc-27548. Western blot analysis of Pael-R expression in NIH/3T3 whole cell lysate.



Pael-R (A-20): sc-27548. Immunofluorescence staining of methanol-fixed HeLa cells showing cytoplasmic localization.

RESEARCH USE

For research use only, not for use in diagnostic procedures.

PROTOCOLS

See our web site at www.scbt.com or our catalog for detailed protocols and support products.


 MONOS
Satisfaction
Guaranteed

Try **Pael-R (G-6): sc-390110**, our highly recommended monoclonal alternative to Pael-R (A-20).