

# EMAP II (M-19): sc-27566

## BACKGROUND

Endothelial monocyte-activating polypeptide (EMAP II, SCYE1: small inducible cytokine subfamily E, member 1) is a chemoattractant cytokine for monocytes and granulocytes. The protein encoded by this gene is a cytokine that is inducible by apoptosis. Tumor necrosis factor  $\alpha$  treatment of murine meth A fibrosarcomas and B16 melanomas upregulates EMAP II mRNA production. The release of this cytokine renders the tumor-associated vasculature sensitive to tumor necrosis factor. EMAP II mRNA translates as a precursor protein, proEMAP II that undergoes proteolysis to become the mature, biologically active cytokine. ProEMAP II may function in binding RNA as part of the tRNA synthetase complex in normal cells and in stimulating inflammatory responses after proteolytic cleavage in tumor cells.

## CHROMOSOMAL LOCATION

Genetic locus: AIMP1 (human) mapping to 4q24; Aimp1 (mouse) mapping to 3 G3.

## SOURCE

EMAP II (M-19) is an affinity purified goat polyclonal antibody raised against a peptide mapping within an internal region of EMAP II of mouse origin.

## PRODUCT

Each vial contains 200  $\mu$ g IgG in 1.0 ml of PBS with < 0.1% sodium azide and 0.1% gelatin.

Blocking peptide available for competition studies, sc-27566 P, (100  $\mu$ g peptide in 0.5 ml PBS containing < 0.1% sodium azide and 0.2% BSA).

## STORAGE

Store at 4° C, **\*\*DO NOT FREEZE\*\***. Stable for one year from the date of shipment. Non-hazardous. No MSDS required.

## APPLICATIONS

EMAP II (M-19) is recommended for detection of precursor and mature EMAP II of mouse, rat and human origin by Western Blotting (starting dilution 1:200, dilution range 1:100-1:1000), immunoprecipitation [1-2  $\mu$ g per 100-500  $\mu$ g of total protein (1 ml of cell lysate)], immunofluorescence (starting dilution 1:50, dilution range 1:50-1:500) and solid phase ELISA (starting dilution 1:30, dilution range 1:30-1:3000).

EMAP II (M-19) is also recommended for detection of precursor and mature EMAP II in additional species, including equine, bovine and porcine.

Suitable for use as control antibody for EMAP II siRNA (h): sc-61855, EMAP II siRNA (m): sc-61856, EMAP II shRNA Plasmid (h): sc-61855-SH, EMAP II shRNA Plasmid (m): sc-61856-SH, EMAP II shRNA (h) Lentiviral Particles: sc-61855-V and EMAP II shRNA (m) Lentiviral Particles: sc-61856-V.

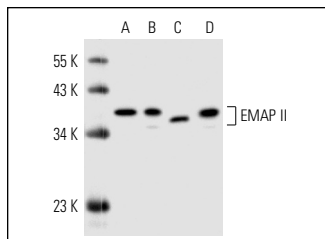
Molecular Weight of EMAP II: 38-40 kDa.

Positive Controls: EMAP II (m): 293T Lysate: sc-120016, RAW 264.7 whole cell lysate: sc-2211 or RAW 309 Cr.1 cell lysate: sc-3814.

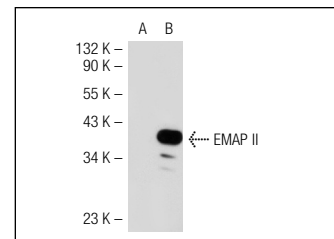
## RECOMMENDED SECONDARY REAGENTS

To ensure optimal results, the following support (secondary) reagents are recommended: 1) Western Blotting: use donkey anti-goat IgG-HRP: sc-2020 (dilution range: 1:2000-1:100,000) or Cruz Marker™ compatible donkey anti-goat IgG-HRP: sc-2033 (dilution range: 1:2000-1:5000), Cruz Marker™ Molecular Weight Standards: sc-2035, TBS Blotto A Blocking Reagent: sc-2333 and Western Blotting Luminol Reagent: sc-2048. 2) Immunoprecipitation: use Protein A/G PLUS-Agarose: sc-2003 (0.5 ml agarose/2.0 ml). 3) Immunofluorescence: use donkey anti-goat IgG-FITC: sc-2024 (dilution range: 1:100-1:400) or donkey anti-goat IgG-TR: sc-2783 (dilution range: 1:100-1:400) with UltraCruz™ Mounting Medium: sc-24941.

## DATA



EMAP II (M-19): sc-27566. Western blot analysis of EMAP II expression in RAW 264.7 (A), RAW 309 Cr.1 (B), THP-1 (C) and WEHI-231 (D) whole cell lysates.



EMAP II (M-19): sc-27566. Western blot analysis of EMAP II expression in non-transfected: sc-117752 (A) and mouse EMAP II transfected: sc-120016 (B) 293T whole cell lysates.

## RESEARCH USE

For research use only, not for use in diagnostic procedures.

## PROTOCOLS

See our web site at [www.scbt.com](http://www.scbt.com) or our catalog for detailed protocols and support products.

**MONOS**  
Satisfaction  
Guaranteed

Try **EMAP II (A-4): sc-393228** or **EMAP II (546-2): sc-32723**, our highly recommended monoclonal alternatives to EMAP II (M-19).