

gp91-phox (E-19): sc-27635

BACKGROUND

Mox1 and the glycoprotein gp91-phox are largely related proteins that are essential components of the NADPH oxidase. The superoxide-generating NADPH oxidase complex expresses in phagocytes, neuroepithelial bodies, vascular smooth muscle cells, and endothelial cells. It includes a membrane-bound flavocytochrome containing two subunits, gp91-phox and p22-phox, and the cytosolic proteins p47-phox and p67-phox. The p22- and gp91-phox subunits also function as surface O₂ sensors that initiate cellular signaling in response to hypoxic conditions. Mox1 and gp91 contain identical C-terminal sequence identity, yet possess distinct expression patterns. gp91-phox expresses in eosinophils, neutrophils, monocytes, and B-lymphocytes, whereas Mox1 is predominantly detected in the colon, with low expression in the uterus and pro-state. Vascular smooth-muscle cells exhibit upregulation of Mox1 in response to PDGF stimulation, which indicates that Mox1 may function analogously to gp91-phox, yet regulate the NADPH superoxide production in non-phagocytic cells.

CHROMOSOMAL LOCATION

Genetic locus: CYBB (human) mapping to Xp11.4; Cybb (mouse) mapping to X A1.1.

SOURCE

gp91-phox (E-19) is an affinity purified goat polyclonal antibody raised against a peptide mapping within an N-terminus extracellular domain of gp91-phox of human origin.

PRODUCT

Each vial contains 200 µg IgG in 1.0 ml of PBS with < 0.1% sodium azide and 0.1% gelatin.

Blocking peptide available for competition studies, sc-27635 P, (100 µg peptide in 0.5 ml PBS containing < 0.1% sodium azide and 0.2% BSA).

APPLICATIONS

gp91-phox (E-19) is recommended for detection of gp91-phox of mouse, rat and human origin by Western Blotting (starting dilution 1:200, dilution range 1:100-1:1000), immunofluorescence (starting dilution 1:50, dilution range 1:50-1:500), immunohistochemistry (including paraffin-embedded sections) (starting dilution 1:50, dilution range 1:50-1:500) and solid phase ELISA (starting dilution 1:30, dilution range 1:30-1:3000).

gp91-phox (E-19) is also recommended for detection of gp91-phox in additional species, including canine.

Suitable for use as control antibody for gp91-phox siRNA (h): sc-35503, gp91-phox siRNA (m): sc-35504, gp91-phox shRNA Plasmid (h): sc-35503-SH, gp91-phox shRNA Plasmid (m): sc-35504-SH, gp91-phox shRNA (h) Lentiviral Particles: sc-35503-V and gp91-phox shRNA (m) Lentiviral Particles: sc-35504-V.

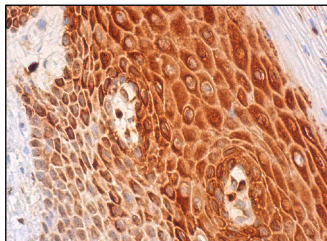
Molecular Weight of gp91-phox: 60/91 kDa.

Positive Controls: A-10 cell lysate: sc-3806, COLO 320DM cell lysate: sc-2226 or Hep G2 cell lysate: sc-2227.

RECOMMENDED SECONDARY REAGENTS

To ensure optimal results, the following support (secondary) reagents are recommended: 1) Western Blotting: use donkey anti-goat IgG-HRP: sc-2020 (dilution range: 1:2000-1:100,000) or Cruz Marker™ compatible donkey anti-goat IgG-HRP: sc-2033 (dilution range: 1:2000-1:5000), Cruz Marker™ Molecular Weight Standards: sc-2035, TBS Blotto A Blocking Reagent: sc-2333 and Western Blotting Luminol Reagent: sc-2048. 2) Immunofluorescence: use donkey anti-goat IgG-FITC: sc-2024 (dilution range: 1:100-1:400) or donkey anti-goat IgG-TR: sc-2783 (dilution range: 1:100-1:400) with UltraCruz™ Mounting Medium: sc-24941. 3) Immunohistochemistry: use ImmunoCruz™: sc-2053 or ABC: sc-2023 goat IgG Staining Systems.

DATA



gp91-phox (E-19): sc-27635. Immunoperoxidase staining of formalin fixed, paraffin-embedded human cervix tissue showing cytoplasmic staining of squamous epithelial cells.

SELECT PRODUCT CITATIONS

- Pan, X., et al. 2011. Inhibition of arsenic-induced rat liver injury by grape seed extract through suppression of NADPH oxidase and TGF-β/Smad activation. *Toxicol. Appl. Pharmacol.* 254: 323-331.
- Ellison, M.A., et al. 2012. Phox activity of differentiated PLB-985 cells is enhanced, in an agonist specific manner, by the PLA2 activity of Prdx6-PLA2. *Eur. J. Immunol.* 42: 1609-1617.

STORAGE

Store at 4° C, ****DO NOT FREEZE****. Stable for one year from the date of shipment. Non-hazardous. No MSDS required.

RESEARCH USE

For research use only, not for use in diagnostic procedures.

PROTOCOLS

See our web site at www.scbt.com or our catalog for detailed protocols and support products.



Try **gp91-phox (54.1): sc-130543** or **gp91-phox (G-1): sc-74514**, our highly recommended monoclonal alternatives to gp91-phox (E-19). Also, for AC, HRP, FITC, PE, Alexa Fluor® 488 and Alexa Fluor® 647 conjugates, see **gp91-phox (54.1): sc-130543**.