

rabbit anti-human IgG-HRP: sc-2769

BACKGROUND

Santa Cruz Biotechnology's secondary antibodies are available conjugated to either an enzyme, biotin or fluorophore for use in a variety of antibody-based applications including Western Blot, immunostaining, flow cytometry and ELISA. Secondary antibodies are commonly affinity purified against immobilized whole IgG isotypes, including IgG₁, IgG_{2a}, IgG_{2b}, IgG₃ and IgG₄. Santa Cruz Biotechnology offers a wide selection of secondary antibodies, which are used in conjunction with our Cruz Marker™ molecular weight standards. We also provide specialized secondaries, such as pre-adsorbed secondary antibodies, which are pre-adsorbed with human IgG and mouse IgG for immunoglobulin-rich tissues and cells, F(ab')₂ fragment secondary antibodies that reduce non-specific secondary antibody binding to Fc receptors on the cell surface, and isotype-specific secondary antibodies against IgM, IgA and IgY.

SOURCE

rabbit anti-human IgG-HRP is an affinity purified secondary antibody raised in rabbit against human IgG and conjugated to HRP (horseradish peroxidase).

PRODUCT

Each vial contains 200 µg IgG in 0.5 ml of 1X PBS containing 40% glycerol.

APPLICATIONS

rabbit anti-human IgG-HRP is recommended for detection of human IgG by Western Blotting (starting dilution: 1:5000, dilution range 1:5000-1:10000).

RECOMMENDED SUPPORT PRODUCTS

- Western Blotting Luminol Reagent, for 2,000 cm² membrane area: sc-2048
- RIPA Lysis Buffer, 50 ml, cell lysis buffer with protease inhibitors: sc-24948
- Electrophoresis Sample Buffer, 2X, 25 ml, reducing buffer: sc-24945
- Complete™ Protease Inhibitor Cocktail Tablet, 20 tablets: sc-29130
- Running Buffer, 10X, 1 L, TRIS-Glycine WB running buffer, pH 8.3: sc-24949
- Towbin, with SDS, 10X, 1 L, WB transfer buffer pH 8.3: sc-24954
- Bovine Serum Albumin (BSA), 100 g, blocking/incubation agent: sc-2323
- TBS Blotto A, lyophilized powder in single-use bottle: sc-2333
- UltraCruz™ PVDF Transfer Membrane, 0.45 µm, 30 cm x 3 m roll: sc-3723
- UltraCruz™ Nitrocellulose Pure Transfer Membrane, 0.22 µm, 30 cm x 3 m roll: sc-3718
- UltraCruz™ Tissue Culture Dish, 100 mm polystyrene dish: sc-200286
- UltraCruz™ Cell Scrapers, 25 cm, sterile, 100 per case: sc-213229
- UltraCruz™ Electrophoresis Cell: sc-201625 : runs up to 10 or 15 sample by SDS – PAGE protein electrophoresis
- UltraCruz™ Autoradiography Film, Blue, 8 x 1, 100 sheets: sc-201697
- UltraCruz™ Gel Incubation Trays, 100 per pack: sc-201755 (blue), sc-201756 (green), sc-201757 (pink), sc-201758 (yellow), sc-201759 (orange)

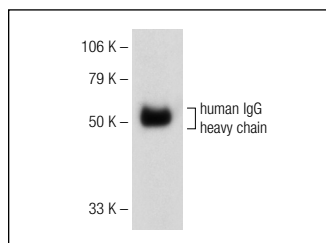
RESEARCH USE

For research use only, not for use in diagnostic procedures.

STORAGE

Store at 4° C, ****DO NOT FREEZE****. Stable for one year from the date of shipment. Non-hazardous. No MSDS required.

DATA



rabbit anti-human IgG-HRP: sc-2769. Western blot detection of denatured human IgG heavy chain.

SELECT PRODUCT CITATIONS

1. Cocola, C., et al. 2009. Isolation of canine mammary cells with stem cell properties and tumour-initiating potential. *Reprod. Domest. Anim.* 44 Suppl 2: 214-217.
2. Stübs, G., et al. 2009. Acylated cholesteryl galactosides are specific antigens of borrelia causing lyme disease and frequently induce antibodies in late stages of disease. *J. Biol. Chem.* 284: 13326-13334.

PROTOCOLS

See our web site at www.scbt.com or our catalog for detailed protocols and support products.