

selenocysteine lyase (L-20): sc-27692

BACKGROUND

Selenocysteine lyase (SCL) catalyzes the decomposition of L-selenocysteine to L-alanine and elemental selenium. The reaction depends on the presence of pyridoxal 5'-phosphate as a cofactor, and occurs in liver, kidney, heart, adrenal and muscle tissue. This regulation by the 5'-phosphate resembles the regulatory mechanisms for other enzymes, including aspartate β -decarboxylase, arginine racemase and kynureninase. SCL potentially functions as a selenium delivery protein to selenophosphate synthetase, facilitating selenoprotein biosynthesis.

CHROMOSOMAL LOCATION

Genetic locus: SCLY (human) mapping to 2q37.3; SclY (mouse) mapping to 1 D.

SOURCE

selenocysteine lyase (L-20) is an affinity purified goat polyclonal antibody raised against a peptide mapping within an internal region of selenocysteine lyase of human origin.

PRODUCT

Each vial contains 200 μ g IgG in 1.0 ml of PBS with < 0.1% sodium azide and 0.1% gelatin.

Blocking peptide available for competition studies, sc-27692 P, (100 μ g peptide in 0.5 ml PBS containing < 0.1% sodium azide and 0.2% BSA).

STORAGE

Store at 4° C, ****DO NOT FREEZE****. Stable for one year from the date of shipment. Non-hazardous. No MSDS required.

RESEARCH USE

For research use only, not for use in diagnostic procedures.

APPLICATIONS

selenocysteine lyase (L-20) is recommended for detection of selenocysteine lyase of mouse, rat and human origin by Western Blotting (starting dilution 1:200, dilution range 1:100-1:1000), immunoprecipitation [1-2 μ g per 100-500 μ g of total protein (1 ml of cell lysate)], immunofluorescence (starting dilution 1:50, dilution range 1:50-1:500) and solid phase ELISA (starting dilution 1:30, dilution range 1:30-1:3000).

selenocysteine lyase (L-20) is also recommended for detection of selenocysteine lyase in additional species, including equine, bovine and porcine.

Suitable for use as control antibody for selenocysteine lyase siRNA (h): sc-44717, selenocysteine lyase siRNA (m): sc-44718, selenocysteine lyase shRNA Plasmid (h): sc-44717-SH, selenocysteine lyase shRNA Plasmid (m): sc-44718-SH, selenocysteine lyase shRNA (h) Lentiviral Particles: sc-44717-V and selenocysteine lyase shRNA (m) Lentiviral Particles: sc-44718-V.

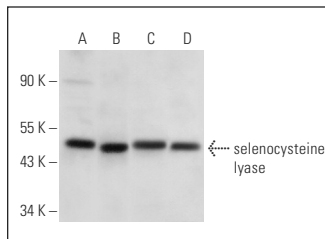
Molecular Weight of selenocysteine lyase isoforms: 47/31 kDa.

Positive Controls: Hep G2 cell lysate: sc-2227, Jurkat whole cell lysate: sc-2204 or selenocysteine lyase (h): 293T Lysate: sc-159970.

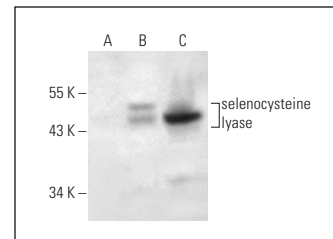
RECOMMENDED SECONDARY REAGENTS

To ensure optimal results, the following support (secondary) reagents are recommended: 1) Western Blotting: use donkey anti-goat IgG-HRP: sc-2020 (dilution range: 1:2000-1:100,000) or Cruz Marker™ compatible donkey anti-goat IgG-HRP: sc-2033 (dilution range: 1:2000-1:5000), Cruz Marker™ Molecular Weight Standards: sc-2035, TBS Blotto A Blocking Reagent: sc-2333 and Western Blotting Luminol Reagent: sc-2048. 2) Immunoprecipitation: use Protein A/G PLUS-Agarose: sc-2003 (0.5 ml agarose/2.0 ml). 3) Immunofluorescence: use donkey anti-goat IgG-FITC: sc-2024 (dilution range: 1:100-1:400) or donkey anti-goat IgG-TR: sc-2783 (dilution range: 1:100-1:400) with UltraCruz™ Mounting Medium: sc-24941.

DATA



selenocysteine lyase (L-20): sc-27692. Western blot analysis of selenocysteine lyase expression in IMR-32 (A), Hep G2 (B), Jurkat (C) and PC-12 (D) whole cell lysates.



selenocysteine lyase (L-20): sc-27692. Western blot analysis of selenocysteine lyase expression in non-transfected 293T: sc-117752 (A), human selenocysteine lyase transfected 293T: sc-159970 (B) and Hep G2 (C) whole cell lysates.

PROTOCOLS

See our web site at www.scbt.com or our catalog for detailed protocols and support products.


 MONOS
Satisfaction
Guaranteed

Try **selenocysteine lyase (B-8): sc-374391** or **selenocysteine lyase (32): sc-136394**, our highly recommended monoclonal alternatives to selenocysteine lyase (L-20).