

STH (G-18): sc-28027

BACKGROUND

The intronless STH gene lies between exons 9 and 10 of the tau gene, which is implicated in a number of neurodegenerative disorders. It encodes a 128 residue protein with no clear homologs, and mimics the expression patterns of tau. Though a polymorphism (Q7R) appears significant, data does not clearly show thus far whether or not this phenotype provides a useful marker for Alzheimer's or other forms of neurodegenerative disease.

REFERENCES

1. Conrad, C., Vianna, C., Freeman, M. and Davies, P. 2002. A polymorphic gene nested within an intron of the tau gene: implications for Alzheimer's disease. *Proc. Natl. Acad. Sci. USA* 99: 7751-7756.
2. Combarros, O., Rodero, L., Infante, J., Palacio, E., Llorca, J., Fernandez-Viadero, C., Pena, N. and Berciano J. 2003. Age-dependent association between the Q7R polymorphism in the Saitohin gene and sporadic Alzheimer's disease. *Dement. Geriatr. Cogn. Disord.* 16: 132-135.
3. Ezquerro, M., Campdelacreu, J., Munoz, E., Oliva, R. and Tolosa, E. 2004. Sequence analysis of tau 3'untranslated region and saitoihin gene in sporadic progressive supranuclear palsy. *J. Neurol. Neurosurg. Psychiatry* 75: 155-157.

CHROMOSOMAL LOCATION

Genetic locus: STH (human) mapping to 17q21.1.

SOURCE

STH (G-18) is an affinity purified goat polyclonal antibody raised against a peptide mapping near the C-terminus of Saitohin of human origin.

PRODUCT

Each vial contains 200 µg IgG in 1.0 ml of PBS with < 0.1% sodium azide and 0.1% gelatin.

Blocking peptide available for competition studies, sc-28027 P, (100 µg peptide in 0.5 ml PBS containing < 0.1% sodium azide and 0.2% BSA).

APPLICATIONS

STH (G-18) is recommended for detection of STH of human origin by Western Blotting (starting dilution 1:200, dilution range 1:100-1:1000), immunofluorescence (starting dilution 1:50, dilution range 1:50-1:500), immunohistochemistry (including paraffin-embedded sections) (starting dilution 1:50, dilution range 1:50-1:500) and solid phase ELISA (starting dilution 1:30, dilution range 1:30-1:3000).

Suitable for use as control antibody for STH siRNA (h): sc-106577, STH shRNA Plasmid (h): sc-106577-SH and STH shRNA (h) Lentiviral Particles: sc-106577-V.

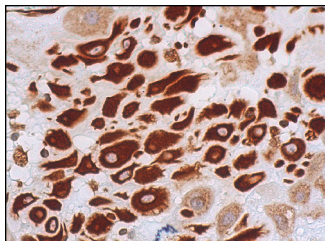
STORAGE

Store at 4° C, ****DO NOT FREEZE****. Stable for one year from the date of shipment. Non-hazardous. No MSDS required.

RECOMMENDED SECONDARY REAGENTS

To ensure optimal results, the following support (secondary) reagents are recommended: 1) Western Blotting: use donkey anti-goat IgG-HRP: sc-2020 (dilution range: 1:2000-1:100,000) or Cruz Marker™ compatible donkey anti-goat IgG-HRP: sc-2033 (dilution range: 1:2000-1:5000), Cruz Marker™ Molecular Weight Standards: sc-2035, TBS Blotto A Blocking Reagent: sc-2333 and Western Blotting Luminol Reagent: sc-2048. 2) Immunofluorescence: use donkey anti-goat IgG-FITC: sc-2024 (dilution range: 1:100-1:400) or donkey anti-goat IgG-TR: sc-2783 (dilution range: 1:100-1:400) with UltraCruz™ Mounting Medium: sc-24941. 3) Immunohistochemistry: use ImmunoCruz™: sc-2053 or ABC: sc-2023 goat IgG Staining Systems.

DATA



STH (G-18): sc-28027. Immunoperoxidase staining of formalin fixed, paraffin-embedded human placenta tissue showing cytoplasmic staining of decidual cells.

RESEARCH USE

For research use only, not for use in diagnostic procedures.

PROTOCOLS

See our web site at www.scbt.com or our catalog for detailed protocols and support products.