

Bet1 (V-19): sc-28083

BACKGROUND

Bet1 (Bet1p homologue, rBet1) is a Type IV membrane protein. It is required for vesicular transport from the ER to the Golgi complex. Bet1 forms a complex with SNARE (soluble N-ethylmaleimide-sensitive factor attachment protein receptor), and functions in membrane fusion between ER-derived vesicles and vesicular tubular clusters (VTCs) or by homotypically fusing ER-derived vesicles. Bet1 is predominantly associated with vesicular spotty structures that concentrate in the peri-Golgi region but are also present throughout the cytoplasm.

REFERENCES

1. Hay, J.C., Hirling, H. and Scheller, R.H. 1996. Mammalian vesicle trafficking proteins of the endoplasmic reticulum and Golgi apparatus. *J. Biol. Chem.* 271: 5671-5679.
2. Xu, D., Joglekar, A.P., Williams, A.L. and Hay, J.C. 2000. Subunit structure of a mammalian ER/Golgi SNARE complex. *J. Biol. Chem.* 275: 39631-39639.

CHROMOSOMAL LOCATION

Genetic locus: BET1 (human) mapping to 7q21.3; Bet1 (mouse) mapping to 6 A1.

SOURCE

Bet1 (V-19) is an affinity purified goat polyclonal antibody raised against a peptide mapping within an internal region of Bet1 of human origin.

PRODUCT

Each vial contains 200 µg IgG in 1.0 ml of PBS with < 0.1% sodium azide and 0.1% gelatin.

Blocking peptide available for competition studies, sc-28083 P, (100 µg peptide in 0.5 ml PBS containing < 0.1% sodium azide and 0.2% BSA).

APPLICATIONS

Bet1 (V-19) is recommended for detection of Bet1 of mouse, rat and human origin by Western Blotting (starting dilution 1:200, dilution range 1:100-1:1000), immunofluorescence (starting dilution 1:50, dilution range 1:50-1:500), immunohistochemistry (including paraffin-embedded sections) (starting dilution 1:50, dilution range 1:50-1:500) and solid phase ELISA (starting dilution 1:30, dilution range 1:30-1:3000).

Bet1 (V-19) is also recommended for detection of Bet1 in additional species, including equine, canine, bovine and porcine.

Suitable for use as control antibody for Bet1 siRNA (h): sc-45900, Bet1 siRNA (m): sc-45901, Bet1 shRNA Plasmid (h): sc-45900-SH, Bet1 shRNA Plasmid (m): sc-45901-SH, Bet1 shRNA (h) Lentiviral Particles: sc-45900-V and Bet1 shRNA (m) Lentiviral Particles: sc-45901-V.

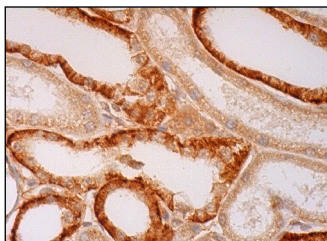
Molecular Weight of Bet1: 18 kDa.

Positive Controls: PC-12 cell lysate: sc-2250 or NRK whole cell lysate: sc-364197.

RECOMMENDED SECONDARY REAGENTS

To ensure optimal results, the following support (secondary) reagents are recommended: 1) Western Blotting: use donkey anti-goat IgG-HRP: sc-2020 (dilution range: 1:2000-1:100,000) or Cruz Marker™ compatible donkey anti-goat IgG-HRP: sc-2033 (dilution range: 1:2000-1:5000), Cruz Marker™ Molecular Weight Standards: sc-2035, TBS Blotto A Blocking Reagent: sc-2333 and Western Blotting Luminol Reagent: sc-2048. 2) Immunofluorescence: use donkey anti-goat IgG-FITC: sc-2024 (dilution range: 1:100-1:400) or donkey anti-goat IgG-TR: sc-2783 (dilution range: 1:100-1:400) with UltraCruz™ Mounting Medium: sc-24941. 3) Immunohistochemistry: use ImmunoCruz™: sc-2053 or ABC: sc-2023 goat IgG Staining Systems.

DATA



Bet1 (V-19): sc-28083. Immunoperoxidase staining of formalin fixed, paraffin-embedded human kidney tissue showing cytoplasmic staining of cells in tubules.

STORAGE

Store at 4° C, ****DO NOT FREEZE****. Stable for one year from the date of shipment. Non-hazardous. No MSDS required.

RESEARCH USE

For research use only, not for use in diagnostic procedures.

PROTOCOLS

See our web site at www.scbt.com or our catalog for detailed protocols and support products.

MONOS
Satisfaction
Guaranteed

Try **Bet1 (17): sc-136390** or **Bet1 (16G6): sc-58247**, our highly recommended monoclonal alternatives to Bet1 (V-19).