

Histatin (N-20): sc-28110

BACKGROUND

Histatin 1 is a histidine-rich phosphoprotein present in human parotid saliva that possesses candidacidal activity and functions in mineralization by adsorbing to hydroxyapatite. Phosphorylation of Histatin 1 contributes to its ability to bind hydroxyapatite. Salivary histatins are a family of small Histidine-rich peptides with potent antifungal activity. Submandibular and sublingual Histatin secretion levels may affect the status of yeast present in the mouth. As a result, histatins have been implicated as potential therapeutic agents against oral candidiasis. A decrease in salivary histatins in relation to total salivary protein is common in old age and can influence the ability of the oral host defense system to address pathogens.

REFERENCES

1. Oppenheim, F.G., et al. 1988. Histatins, a novel family of histidine-rich proteins in human parotid secretion. Isolation, characterization, primary structure, and fungistatic effects on *Candida albicans*. J. Biol. Chem. 263: 7472-7477.
2. Sabatini, L.M., et al. 1989. Histatins, a family of salivary histidine-rich proteins, are encoded by at least two loci (HIS1 and HIS2). Biochem. Biophys. Res. Commun. 160: 495-502.
3. Driscoll, J., et al. 1995. Functional comparison of native and recombinant human salivary Histatin 1. J. Dent. Res. 74: 1837-1844.
4. Koshlukova, S.E., et al. 1999. Salivary Histatin 5 induces non-lytic release of ATP from *Candida albicans* leading to cell death. J. Biol. Chem. 274: 18872-18879.
5. Tamaki, N., et al. 2002. Comparison of inhibitory activity on calcium phosphate precipitation by acidic proline-rich proteins, statherin, and Histatin-1. Calcif. Tissue Int. 71: 59-62.
6. Li, X.S., et al. 2003. *Candida albicans* Ssa1/2p is the cell envelope binding protein for human salivary Histatin 5. J. Biol. Chem. 278: 28553-28561.
7. Li, J., et al. 2004. Identification of *in vivo* pellicle constituents by analysis of serum immune responses. J. Dent. Res. 83: 60-64.
8. Baev, D., et al. 2004. The TRK1 potassium transporter is the critical effector for killing of *Candida albicans* by the cationic protein, Histatin 5. J. Biol. Chem. 279: 55060-55072.
9. Castagnola, M., et al. 2004. A cascade of 24 histatins (Histatin 3 fragments) in human saliva. Suggestions for a pre-secretory sequential cleavage pathway. J. Biol. Chem. 279: 41436-41443.
10. Den Hertog, A.L., et al. 2004. Interactions of Histatin 5 and Histatin 5-derived peptides with liposome membranes: surface effects, translocation and permeabilization. Biochem. J. 379: 665-672.

CHROMOSOMAL LOCATION

Genetic locus: HTN1 (human) mapping to 4q21.

SOURCE

Histatin (N-20) is an affinity purified goat polyclonal antibody raised against a peptide mapping at the N-terminus of Histatin of human origin.

PRODUCT

Each vial contains 200 µg IgG in 1.0 ml of PBS with < 0.1% sodium azide and 0.1% gelatin.

Blocking peptide available for competition studies, sc-28110 P, (100 µg peptide in 0.5 ml PBS containing < 0.1% sodium azide and 0.2% BSA).

APPLICATIONS

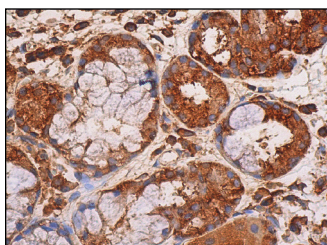
Histatin (N-20) is recommended for detection of Histatins 1-12 of human origin by Western Blotting (starting dilution 1:200, dilution range 1:100-1:1000), immunofluorescence (starting dilution 1:50, dilution range 1:50-1:500), immunohistochemistry (including paraffin-embedded sections) (starting dilution 1:50, dilution range 1:50-1:500) and solid phase ELISA (starting dilution 1:30, dilution range 1:30-1:3000).

Molecular Weight of Histatin: 7 kDa.

RECOMMENDED SECONDARY REAGENTS

To ensure optimal results, the following support (secondary) reagents are recommended: 1) Western Blotting: use donkey anti-goat IgG-HRP: sc-2020 (dilution range: 1:2000-1:100,000) or Cruz Marker™ compatible donkey anti-goat IgG-HRP: sc-2033 (dilution range: 1:2000-1:5000), Cruz Marker™ Molecular Weight Standards: sc-2035, TBS Blotto A Blocking Reagent: sc-2333 and Western Blotting Luminol Reagent: sc-2048. 2) Immunofluorescence: use donkey anti-goat IgG-FITC: sc-2024 (dilution range: 1:100-1:400) or donkey anti-goat IgG-TR: sc-2783 (dilution range: 1:100-1:400) with UltraCruz™ Mounting Medium: sc-24941. 3) Immunohistochemistry: use ImmunoCruz™: sc-2053 or ABC: sc-2023 goat IgG Staining Systems.

DATA



Histatin (N-20): sc-28110. Immunoperoxidase staining of formalin fixed, paraffin-embedded human salivary gland tissue showing cytoplasmic staining of glandular cells.

STORAGE

Store at 4° C, **DO NOT FREEZE**. Stable for one year from the date of shipment. Non-hazardous. No MSDS required.

RESEARCH USE

For research use only, not for use in diagnostic procedures.

PROTOCOLS

See our web site at www.scbt.com or our catalog for detailed protocols and support products.