

LTBP-1 (E-20): sc-28133

BACKGROUND

Latent transforming growth factor- β 1 binding protein 1 (LTBP-1), a heavy glycoprotein, is part of the platelet-derived TGF β 1 complex. LTBP-1 serves as an anchor for latent TGF β in the extracellular matrix and is a component of microfibrillar structures. Cleavage of LTBP results in LTBP-1, which may sequester latent TGF β in the extracellular matrix and regulate its activation. LTBP-1 mRNA is enriched in ovarian carcinoma tissues and highly expressed in serous and mucinous adenocarcinomas.

REFERENCES

1. Kanzaki, T., et al. 1990. TGF β 1 binding protein: a component of the large latent complex of TGF β 1 with multiple repeat sequences. *Cell* 61: 1051-1061.
2. Olofsson, A., et al. 1995. Efficient association of an amino-terminally extended form of human latent transforming growth factor- β binding protein with the extracellular matrix. *J. Biol. Chem.* 270: 31294-31297.

CHROMOSOMAL LOCATION

Genetic locus: LTBP1 (human) mapping to 2p22.3; Ltbp1 (mouse) mapping to 17 E2.

SOURCE

LTBP-1 (E-20) is an affinity purified goat polyclonal antibody raised against a peptide mapping within an internal region of LTBP-1 of human origin.

PRODUCT

Each vial contains 200 μ g IgG in 1.0 ml of PBS with < 0.1% sodium azide and 0.1% gelatin.

Blocking peptide available for competition studies, sc-28133 P, (100 μ g peptide in 0.5 ml PBS containing < 0.1% sodium azide and 0.2% BSA).

APPLICATIONS

LTBP-1 (E-20) is recommended for detection of LTBP-1 of mouse, rat and human origin by Western Blotting (starting dilution 1:200, dilution range 1:100-1:1000), immunoprecipitation [1-2 μ g per 100-500 μ g of total protein (1 ml of cell lysate)], immunofluorescence (starting dilution 1:50, dilution range 1:50-1:500) and solid phase ELISA (starting dilution 1:30, dilution range 1:30-1:3000).

LTBP-1 (E-20) is also recommended for detection of LTBP-1 in additional species, including equine, canine, bovine and avian.

Suitable for use as control antibody for LTBP-1 siRNA (h): sc-45454, LTBP-1 siRNA (m): sc-45455, LTBP-1 shRNA Plasmid (h): sc-45454-SH, LTBP-1 shRNA Plasmid (m): sc-45455-SH, LTBP-1 shRNA (h) Lentiviral Particles: sc-45454-V and LTBP-1 shRNA (m) Lentiviral Particles: sc-45455-V.

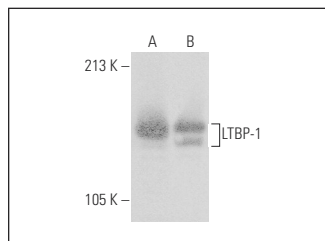
Molecular Weight of LTBP-1: 240 kDa.

Positive Controls: HeLa whole cell lysate: sc-2200, mouse liver extract: sc-2256 or rat liver extract: sc-2395.

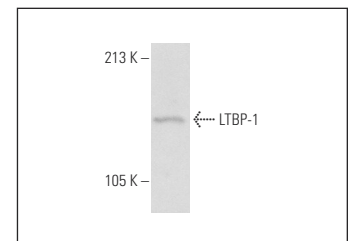
RECOMMENDED SECONDARY REAGENTS

To ensure optimal results, the following support (secondary) reagents are recommended: 1) Western Blotting: use donkey anti-goat IgG-HRP: sc-2020 (dilution range: 1:2000-1:100,000) or Cruz Marker™ compatible donkey anti-goat IgG-HRP: sc-2033 (dilution range: 1:2000-1:5000), Cruz Marker™ Molecular Weight Standards: sc-2035, TBS Blotto A Blocking Reagent: sc-2333 and Western Blotting Luminol Reagent: sc-2048. 2) Immunoprecipitation: use Protein A/G PLUS-Agarose: sc-2003 (0.5 ml agarose/2.0 ml). 3) Immunofluorescence: use donkey anti-goat IgG-FITC: sc-2024 (dilution range: 1:100-1:400) or donkey anti-goat IgG-TR: sc-2783 (dilution range: 1:100-1:400) with UltraCruz™ Mounting Medium: sc-24941.

DATA



LTBP-1 (E-20): sc-28133. Western blot analysis of LTBP-1 expression in rat liver (A) and mouse liver (B) tissue extracts.



LTBP-1 (E-20): sc-28133. Western blot analysis of LTBP-1 expression in HeLa whole cell lysate.

STORAGE

Store at 4° C, **DO NOT FREEZE**. Stable for one year from the date of shipment. Non-hazardous. No MSDS required.

RESEARCH USE

For research use only, not for use in diagnostic procedures.

PROTOCOLS

See our web site at www.scbt.com or our catalog for detailed protocols and support products.

MONOS
Satisfaction
Guaranteed

Try **LTBP-1 (H-1): sc-271140**, our highly recommended monoclonal alternative to LTBP-1 (E-20).