

# Pericentrin 2 (E-20): sc-28146

## BACKGROUND

Pericentrin 2, also known as Pericentrin B or Kendrin, is an integral component of the pericentriolar material. The protein localizes specifically to centrosomes throughout all stages of the cell cycle. The protein remains centrosomal following microtubule depolymerization. Pericentrin 2 binds calmodulin and is widely expressed in most tissues, including kidney, placenta, liver and thymus.

## REFERENCES

1. SWISS-PROT/TrEMBL (O95613). World Wide Web URL: <http://www.expasy.ch/sprot/sprot-top.html>
2. Flory, M.R., et al. 2000. Identification of a human centrosomal calmodulin-binding protein that shares homology with pericentrin. *Proc. Natl. Acad. Sci. USA* 11:5919-23.
3. Flory, M.R., et al. 2003. The centrosomal proteins pericentrin and kendrin are encoded by alternatively spliced products of one gene. *Genomics* 82: 401-405.
4. Miyoshi, K., et al. 2004. DISC1 localizes to the centrosome by binding to kendrin. *Biochem. Biophys. Res. Commun.* 317:1195-1199.
5. Zimmerman, W.C., et al. 2004. Mitosis-specific anchoring of  $\gamma$  tubulin complexes by pericentrin controls spindle organization and mitotic entry. *Mol. Biol. Cell* 15: 3642-3657.
6. Giehl, M., et al. 2005. Centrosome aberrations in chronic myeloid leukemia correlate with stage of disease and chromosomal instability. *Leukemia* 19: 1192-1197.
7. Golubkov, V.S., et al. 2005. Centrosomal pericentrin is a direct cleavage target of membrane type-1 matrix metalloproteinase in humans but not in mice: potential implications for tumorigenesis. *J. Biol. Chem.* 280: 42237-44241.

## CHROMOSOMAL LOCATION

Genetic locus: Pcnt (mouse) mapping to 10 C1.

## SOURCE

Pericentrin 2 (E-20) is an affinity purified goat polyclonal antibody raised against a peptide mapping at the N-terminus of Pericentrin 2 of mouse origin.

## PRODUCT

Each vial contains 200  $\mu$ g IgG in 1.0 ml of PBS with < 0.1% sodium azide and 0.1% gelatin.

Blocking peptide available for competition studies, sc-28146 P, (100  $\mu$ g peptide in 0.5 ml PBS containing < 0.1% sodium azide and 0.2% BSA).

## STORAGE

Store at 4° C, **\*\*DO NOT FREEZE\*\***. Stable for one year from the date of shipment. Non-hazardous. No MSDS required.

## APPLICATIONS

Pericentrin 2 (E-20) is recommended for detection of Pericentrin 2 of mouse and rat origin by Western Blotting (starting dilution 1:200, dilution range 1:100-1:1000), immunofluorescence (starting dilution 1:50, dilution range 1:50-1:500), immunohistochemistry (including paraffin-embedded sections) (starting dilution 1:50, dilution range 1:50-1:500) and solid phase ELISA (starting dilution 1:30, dilution range 1:30-1:3000).

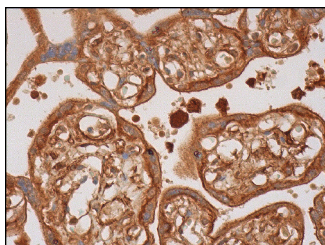
Suitable for use as control antibody for Pericentrin 2 siRNA (m): sc-45457, Pericentrin 2 shRNA Plasmid (m): sc-45457-SH and Pericentrin 2 shRNA (m) Lentiviral Particles: sc-45457-V.

Molecular Weight of Pericentrin 2: 220 kDa.

## RECOMMENDED SECONDARY REAGENTS

To ensure optimal results, the following support (secondary) reagents are recommended: 1) Western Blotting: use donkey anti-goat IgG-HRP: sc-2020 (dilution range: 1:2000-1:100,000) or Cruz Marker™ compatible donkey anti-goat IgG-HRP: sc-2033 (dilution range: 1:2000-1:5000), Cruz Marker™ Molecular Weight Standards: sc-2035, TBS Blotto A Blocking Reagent: sc-2333 and Western Blotting Luminol Reagent: sc-2048. 2) Immunofluorescence: use donkey anti-goat IgG-FITC: sc-2024 (dilution range: 1:100-1:400) or donkey anti-goat IgG-TR: sc-2783 (dilution range: 1:100-1:400) with UltraCruz™ Mounting Medium: sc-24941. 3) Immunohistochemistry: use ImmunoCruz™: sc-2053 or ABC: sc-2023 goat IgG Staining Systems.

## DATA



Pericentrin 2 (E-20): sc-28146. Immunoperoxidase staining of formalin fixed, paraffin-embedded human placenta tissue showing cytoplasmic and membrane staining of Islets of Langerhans.

## RESEARCH USE

For research use only, not for use in diagnostic procedures.

## PROTOCOLS

See our web site at [www.scbt.com](http://www.scbt.com) or our catalog for detailed protocols and support products.