

Zic1 (P-20): sc-28149

BACKGROUND

Zic1 (zinc finger protein of the cerebellum 1) is a C₂H₂ zinc finger transcription factor that controls the expansion of neuronal precursors by inhibiting the progression of neuronal differentiation. Zic1 determines the cerebellar folial pattern by influencing proliferation in the external germinal layer (EGL). Zic1 can bind and transactivate the apolipoprotein E gene. This gene is closely linked to the gene encoding zinc finger protein of the cerebellum 4, a related family member on chromosome 3.

CHROMOSOMAL LOCATION

Genetic locus: ZIC1 (human) mapping to 3q24; Zic1 (mouse) mapping to 9 E3.3.

SOURCE

Zic1 (P-20) is an affinity purified goat polyclonal antibody raised against a peptide mapping near the C-terminus of Zic1 of human origin.

PRODUCT

Each vial contains 200 µg IgG in 1.0 ml of PBS with < 0.1% sodium azide and 0.1% gelatin.

Blocking peptide available for competition studies, sc-28149 P, (100 µg peptide in 0.5 ml PBS containing < 0.1% sodium azide and 0.2% BSA).

Available as TransCruz reagent for Gel Supershift and ChIP applications, sc-28149 X, 200 µg/0.1 ml.

STORAGE

Store at 4° C, ****DO NOT FREEZE****. Stable for one year from the date of shipment. Non-hazardous. No MSDS required.

APPLICATIONS

Zic1 (P-20) is recommended for detection of Zic1 of mouse, rat and human origin by Western Blotting (starting dilution 1:200, dilution range 1:100-1:1000), immunoprecipitation [1-2 µg per 100-500 µg of total protein (1 ml of cell lysate)], immunofluorescence (starting dilution 1:50, dilution range 1:50-1:500) and solid phase ELISA (starting dilution 1:30, dilution range 1:30-1:3000).

Zic1 (P-20) is also recommended for detection of Zic1 in additional species, including canine and porcine.

Suitable for use as control antibody for Zic1 siRNA (h): sc-106710, Zic1 siRNA (m): sc-155609, Zic1 shRNA Plasmid (h): sc-106710-SH, Zic1 shRNA Plasmid (m): sc-155609-SH, Zic1 shRNA (h) Lentiviral Particles: sc-106710-V and Zic1 shRNA (m) Lentiviral Particles: sc-155609-V.

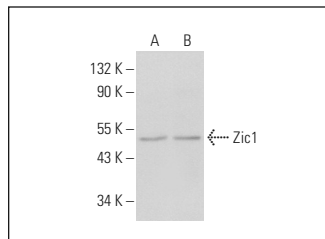
Zic1 (P-20) X TransCruz antibody is recommended for Gel Supershift and ChIP applications.

Positive Controls: human cerebellum tissue extract or mouse cerebellum extract: sc-2403.

RECOMMENDED SECONDARY REAGENTS

To ensure optimal results, the following support (secondary) reagents are recommended: 1) Western Blotting: use donkey anti-goat IgG-HRP: sc-2020 (dilution range: 1:2000-1:100,000) or Cruz Marker™ compatible donkey anti-goat IgG-HRP: sc-2033 (dilution range: 1:2000-1:5000), Cruz Marker™ Molecular Weight Standards: sc-2035, TBS Blotto A Blocking Reagent: sc-2333 and Western Blotting Luminol Reagent: sc-2048. 2) Immunoprecipitation: use Protein A/G PLUS-Agarose: sc-2003 (0.5 ml agarose/2.0 ml). 3) Immunofluorescence: use donkey anti-goat IgG-FITC: sc-2024 (dilution range: 1:100-1:400) or donkey anti-goat IgG-TR: sc-2783 (dilution range: 1:100-1:400) with UltraCruz™ Mounting Medium: sc-24941.

DATA



Zic1 (P-20): sc-28149. Western blot analysis of Zic1 expression in mouse cerebellum (A) and human cerebellum (B) tissue extracts.

RESEARCH USE

For research use only, not for use in diagnostic procedures.

PROTOCOLS

See our web site at www.scbt.com or our catalog for detailed protocols and support products.


 MONOS
Satisfaction
Guaranteed

Try **Zic1 (1A8): sc-517106**, our highly recommended monoclonal alternative to Zic1 (P-20).