

ING1 (H-80): sc-28227

BACKGROUND

ING1 (Inhibitor of growth protein 1) is a 422 amino acid protein encoded by the human gene ING1. ING1 belongs to the ING family and contains one PHD-type zinc finger. ING1 cooperates with p53/TP53 in the negative regulatory pathway of cell growth by modulating p53-dependent transcriptional activation. Implicated as a tumor suppressor gene, ING1 is a nuclear protein with several known isoforms, three of which are designated p47ING1 (ING1 precursor), p33ING1 and p24ING1, whose expression varies per tissue. The p33ING1 isoform is expressed in all normal tissues and cells, while the p24ING1 isoform is expressed in testis, liver, and kidney, and is weakly expressed in colon and brain, but not in breast or cultured melanocytes.

REFERENCES

- Garkavtsev, I., Grigorian, I.A., Ossovskaia, V.S., Chernov, M.V., Chumakov, P.M. and Gudkov, A.V. 1998. The candidate tumour suppressor p33ING1 cooperates with p53 in cell growth control. *Nature* 391: 295-298.
- Saito, A., Furukawa, T., Fukushige, S., Koyama, S., Hoshi, M., Hayashi, Y. and Horii, A. 2000. p24ING1-ALT1 and p47ING1-ALT2, distinct alternative transcripts of p33ING1. *J. Hum. Genet.* 45: 177-181.
- Gunduz, M., Ouchida, M., Fukushima, K., Hanafusa, H., Etani, T., Nishioka, S., Nishizaki, K. and Shimizu, K. 2000. Genomic structure of the human ING1 gene and tumor-specific mutations detected in head and neck squamous cell carcinomas. *Cancer Res.* 60: 3143-3146.
- Zhu, J.J., Li, F.B., Zhu, X.F. and Liao, W.M. 2006. The p33ING1b tumor suppressor cooperates with p53 to induce apoptosis in response to etoposide in human osteosarcoma cells. *Life Sci.* 78: 1469-1477.
- Okano, T., Gemma, A., Hosoya, Y., Hosomi, Y., Nara, M., Kokubo, Y., Yoshimura, A., Shibuya, M., Nagashima, M., Harris, C.C. and Kudoh, S. 2006. Alterations in novel candidate tumor suppressor genes, ING1 and ING2 in human lung cancer. *Oncol. Rep.* 15: 545-549.
- Gong, W., Russell, M., Suzuki, K. and Riabowol, K. 2006. Subcellular targeting of p33ING1b by phosphorylation-dependent 14-3-3 binding regulates p21WAF1 expression. *Mol. Cell. Biol.* 26: 2947-2954.

CHROMOSOMAL LOCATION

Genetic locus: ING1 (human) mapping to 13q34; Ing1 (mouse) mapping to 8 A1.1.

SOURCE

ING1 (H-80) is a rabbit polyclonal antibody raised against amino acids 244-319 of ING1 of human origin.

PRODUCT

Each vial contains 200 µg IgG in 1.0 ml of PBS with < 0.1% sodium azide and 0.1% gelatin.

STORAGE

Store at 4° C, ****DO NOT FREEZE****. Stable for one year from the date of shipment. Non-hazardous. No MSDS required.

APPLICATIONS

ING1 (H-80) is recommended for detection of ING1 isoforms of mouse, rat and human origin by Western Blotting (starting dilution 1:200, dilution range 1:100-1:1000), immunoprecipitation [1-2 µg per 100-500 µg of total protein (1 ml of cell lysate)], immunofluorescence (starting dilution 1:50, dilution range 1:50-1:500) and solid phase ELISA (starting dilution 1:30, dilution range 1:30-1:3000).

Suitable for use as control antibody for ING1 siRNA (m): sc-36151, ING1 siRNA (h): sc-36152, ING1 shRNA Plasmid (m): sc-36151-SH, ING1 shRNA Plasmid (h): sc-36152-SH, ING1 shRNA (m) Lentiviral Particles: sc-36151-V and ING1 shRNA (h) Lentiviral Particles: sc-36152-V.

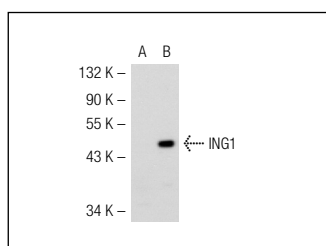
Molecular Weight of ING1 isoforms: 24/34/47 kDa.

Positive Controls: Jurkat whole cell lysate: sc-2204, p33ING1 (m): 293T Lysate: sc-122316 or A673 cell lysate: sc-2414.

RECOMMENDED SECONDARY REAGENTS

To ensure optimal results, the following support (secondary) reagents are recommended: 1) Western Blotting: use goat anti-rabbit IgG-HRP: sc-2004 (dilution range: 1:2000-1:100,000) or Cruz Marker™ compatible goat anti-rabbit IgG-HRP: sc-2030 (dilution range: 1:2000-1:5000), Cruz Marker™ Molecular Weight Standards: sc-2035, TBS Blotto A Blocking Reagent: sc-2333 and Western Blotting Luminol Reagent: sc-2048. 2) Immunoprecipitation: use Protein A/G PLUS-Agarose: sc-2003 (0.5 ml agarose/2.0 ml). 3) Immunofluorescence: use goat anti-rabbit IgG-FITC: sc-2012 (dilution range: 1:100-1:400) or goat anti-rabbit IgG-TR: sc-2780 (dilution range: 1:100-1:400) with UltraCruz™ Mounting Medium: sc-24941.

DATA



ING1 (H-80): sc-28227. Western blot analysis of ING1 expression in non-transfected: sc-117752 (A) and mouse ING1 transfected: sc-122316 (B) 293T whole cell lysates.

RESEARCH USE

For research use only, not for use in diagnostic procedures.

MONOS
Satisfaction
Guaranteed

Try **ING1 (E-10): sc-373817** or **ING1 (E-2): sc-374295**, our highly recommended monoclonal alternatives to ING1 (H-80).