

# galectin-2 (M-45): sc-28250

## BACKGROUND

Galectins are a family of soluble  $\beta$ -galactoside-binding animal lectins that modulate cell-to-cell adhesion and cell-to-extracellular matrix (ECM) interactions and play a role in tumor progression, pre-mRNA splicing and apoptosis. Galectin-2, also known as LGALS2, Lactose-binding lectin 2 or HL14, is structurally closely related to galectin-1, but is expressed primarily in the gastrointestinal tract. Galectin-2 induces apoptosis in activated T cells and binds to the cytokine lymphotoxin- $\alpha$  (LTA) with possible implications in risk of myocardial infarction.

## REFERENCES

1. Couraud, P.O., et al. 1989. Molecular cloning, characterization, and expression of a human 14 kDa lectin. *J. Biol. Chem.* 264: 1310-1316.
2. Hirabayashi, J., et al. 1989. Cloning and nucleotide sequence of a full-length cDNA for human 14 kDa  $\beta$ -galactoside-binding lectin. *Biochim. Biophys. Acta* 1008: 85-91.
3. Mehrabian, M., et al. 1993. Two members of the S-lac lectin gene family, LGALS1 and LGALS2, reside in close proximity on human chromosome 22q12-q13. *Genomics* 15: 418-420.

## CHROMOSOMAL LOCATION

Genetic locus: *Lgals2* (mouse) mapping to 15 E1.

## SOURCE

galectin-2 (M-45) is a rabbit polyclonal antibody raised against amino acids 1-45 mapping at the N-terminus of galectin-2 of mouse origin.

## PRODUCT

Each vial contains 200  $\mu$ g IgG in 1.0 ml of PBS with < 0.1% sodium azide and 0.1% gelatin.

## STORAGE

Store at 4° C, **\*\*DO NOT FREEZE\*\***. Stable for one year from the date of shipment. Non-hazardous. No MSDS required.

## APPLICATIONS

galectin-2 (M-45) is recommended for detection of galectin-2 of mouse and rat origin by Western Blotting (starting dilution 1:200, dilution range 1:100-1:1000), immunoprecipitation [1-2  $\mu$ g per 100-500  $\mu$ g of total protein (1 ml of cell lysate)], immunofluorescence (starting dilution 1:50, dilution range 1:50-1:500) and solid phase ELISA (starting dilution 1:30, dilution range 1:30-1:3000).

Suitable for use as control antibody for galectin-2 siRNA (m): sc-44533, galectin-2 shRNA Plasmid (m): sc-44533-SH and galectin-2 shRNA (m) Lentiviral Particles: sc-44533-V.

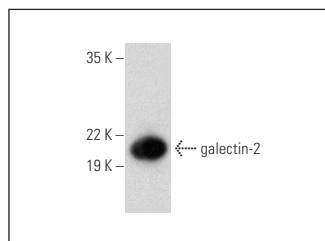
Molecular Weight of galectin-2: 17 kDa.

Positive Controls: mouse small intestine extract: sc-364252.

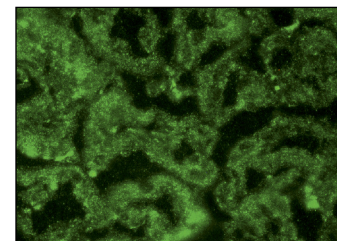
## RECOMMENDED SECONDARY REAGENTS

To ensure optimal results, the following support (secondary) reagents are recommended: 1) Western Blotting: use goat anti-rabbit IgG-HRP: sc-2004 (dilution range: 1:2000-1:100,000) or Cruz Marker™ compatible goat anti-rabbit IgG-HRP: sc-2030 (dilution range: 1:2000-1:5000), Cruz Marker™ Molecular Weight Standards: sc-2035, TBS Blotto A Blocking Reagent: sc-2333 and Western Blotting Luminol Reagent: sc-2048. 2) Immunoprecipitation: use Protein A/G PLUS-Agarose: sc-2003 (0.5 ml agarose/2.0 ml). 3) Immunofluorescence: use goat anti-rabbit IgG-FITC: sc-2012 (dilution range: 1:100-1:400) or goat anti-rabbit IgG-TR: sc-2780 (dilution range: 1:100-1:400) with UltraCruz™ Mounting Medium: sc-24941.

## DATA



galectin-2 (M-45): sc-28250. Western blot analysis of galectin-2 expression in mouse small intestine tissue extract.



galectin-2 (M-45): sc-28250. Immunofluorescence staining of normal mouse kidney frozen section showing cytoplasmic and extracellular staining.

## RESEARCH USE

For research use only, not for use in diagnostic procedures.

## PROTOCOLS

See our web site at [www.scbt.com](http://www.scbt.com) or our catalog for detailed protocols and support products.