

# Fascin 1 (H-110): sc-28265

## BACKGROUND

Cell adhesion to extracellular matrix is an important physiological stimulus for organization of the Actin-based cytoskeleton. Adhesion to the matrix glycoprotein Thrombospondin-1 triggers the sustained formation of F-Actin microspikes that contain the Actin-bundling protein Fascin. These structures are also implicated in cell migration, which may be an important function of Thrombospondin-1 in tissue remodelling and wound repair. Fascin bundles Actin microfilaments within dynamic cellular structures such as microspikes, stress fibers and membrane ruffles. Fascin could serve as a prognostic factor for abnormal ovarian epithelial pathology and could be a novel target for the treatment of ovarian cancer. Fascin, an Actin-bundling protein, identifies dendritic cells in the blood and in tissues.

## REFERENCES

1. Jaffe, R., DeVaughn, D. and Langhoff, E. 1998. Fascin and the differential diagnosis of childhood histiocytic lesions. *Pediatr. Dev. Pathol.* 1: 216-221.
2. Adams, J.C. and Schwartz, M.A. 2000. Stimulation of Fascin spikes by Thrombospondin-1 is mediated by the GTPases Rac and Cdc42. *J. Cell Biol.* 150: 807-822.
3. Tubb, B.E., Bardien-Kruger, S., Kashork, C.D., Shaffer, L.G., Ramagli, L.S., Xu, J., Siciliano, M.J. and Bryan, J. 2000. Characterization of human retinal Fascin gene (FSCN2) at 17q25: close physical linkage of Fascin and cytoplasmic Actin genes. *Genomics* 65: 146-156.
4. Hu, W., McCrea, P.D., Deavers, M., Kavanagh, J.J., Kudelka, A.P. and Verschraegen, C.F. 2000. Increased expression of Fascin, motility associated protein, in cell cultures derived from ovarian cancer and in borderline and carcinomatous ovarian tumors. *Clin. Exp. Metastasis* 18: 83-88.
5. Grothey, A., Hashizume, R., Sahin, A.A. and McCrea, P.D. 2000. Fascin, an Actin-bundling protein associated with cell motility, is upregulated in hormone receptor negative breast cancer. *Br. J. Cancer* 83: 870-873.

## CHROMOSOMAL LOCATION

Genetic locus: FSCN1 (human) mapping to 7p22.1; Fscn1 (mouse) mapping to 5 G2.

## SOURCE

Fascin 1 (H-110) is a rabbit polyclonal antibody raised against amino acids 384-493 mapping at the C-terminus of Fascin 1 of human origin.

## PRODUCT

Each vial contains 200 µg IgG in 1.0 ml of PBS with < 0.1% sodium azide and 0.1% gelatin.

## STORAGE

Store at 4° C, \*\*DO NOT FREEZE\*\*. Stable for one year from the date of shipment. Non-hazardous. No MSDS required.

## RESEARCH USE

For research use only, not for use in diagnostic procedures.

## APPLICATIONS

Fascin 1 (H-110) is recommended for detection of Fascin 1 of mouse, rat and human origin by Western Blotting (starting dilution 1:200, dilution range 1:100-1:1000), immunoprecipitation [1-2 µg per 100-500 µg of total protein (1 ml of cell lysate)], immunofluorescence (starting dilution 1:50, dilution range 1:50-1:500) and solid phase ELISA (starting dilution 1:30, dilution range 1:30-1:3000).

Fascin 1 (H-110) is also recommended for detection of Fascin 1 in additional species, including equine, canine, bovine, porcine and avian.

Suitable for use as control antibody for Fascin 1 siRNA (h): sc-35359, Fascin 1 siRNA (m): sc-35360, Fascin 1 shRNA Plasmid (h): sc-35359-SH, Fascin 1 shRNA Plasmid (m): sc-35360-SH, Fascin 1 shRNA (h) Lentiviral Particles: sc-35359-V and Fascin 1 shRNA (m) Lentiviral Particles: sc-35360-V.

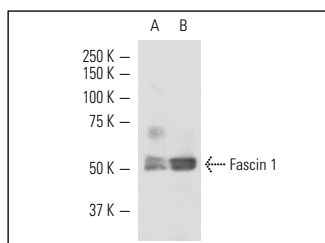
Molecular Weight of Fascin 1: 55 kDa.

Positive Controls: MES-SA/Dx5 cell lysate: sc-2284, U-87 MG cell lysate: sc-2411 or HeLa whole cell lysate: sc-2200.

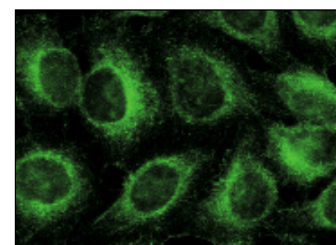
## RECOMMENDED SECONDARY REAGENTS

To ensure optimal results, the following support (secondary) reagents are recommended: 1) Western Blotting: use goat anti-rabbit IgG-HRP: sc-2004 (dilution range: 1:2000-1:100,000) or Cruz Marker™ compatible goat anti-rabbit IgG-HRP: sc-2030 (dilution range: 1:2000-1:5000), Cruz Marker™ Molecular Weight Standards: sc-2035, TBS Blotto A Blocking Reagent: sc-2333 and Western Blotting Luminol Reagent: sc-2048. 2) Immunoprecipitation: use Protein A/G PLUS-Agarose: sc-2003 (0.5 ml agarose/2.0 ml). 3) Immunofluorescence: use goat anti-rabbit IgG-FITC: sc-2012 (dilution range: 1:100-1:400) or goat anti-rabbit IgG-TR: sc-2780 (dilution range: 1:100-1:400) with UltraCruz™ Mounting Medium: sc-24941.

## DATA



Fascin 1 (H-110): sc-28265. Western blot analysis of Fascin 1 expression in MES-SA/Dx5 (A) and HeLa (B) whole cell lysates.



Fascin 1 (H-110): sc-28265. Immunofluorescence staining of methanol-fixed HeLa cells showing cytoplasmic localization.

## PROTOCOLS

See our web site at [www.scbt.com](http://www.scbt.com) or our catalog for detailed protocols and support products.