

# Nebulin (H-300): sc-28286

## BACKGROUND

Caldesmon, Filamin 1, Nebulin and Villin are differentially expressed and regulated Actin binding proteins. Both muscular (CDh) and non-muscular (CDI) forms of caldesmon have been identified and each has been shown to bind to Actin as well as to calmodulin and Myosin. CDh is expressed predominantly on thin filaments in smooth muscle, whereas CDI is widely expressed in non-muscle tissues and cells. Filamin 1, which is ubiquitously expressed and exists as a homodimer, functions to crosslink Actin to filaments. Nebulin is a large filamentous protein specific to muscle tissue that may function as a ruler for filament length. Several isoforms of Nebulin are produced by alternative exon usage. Villin is Ca<sup>2+</sup>-regulated and is the major structural component of the brush border of absorptive cells.

## REFERENCES

1. Weihing, R.R. 1988. Actin-binding and dimerization domains of HeLa cell Filamin. *Biochemistry* 27: 1865-1869.
2. Maunoury, R., et al. 1992. Developmental regulation of Villin gene expression in the epithelial cell lineages of mouse digestive and urogenital tracts. *Development* 115: 717-728.
3. Marston, S., et al. 1992. Caldesmon binds to smooth muscle Myosin and Myosin rod and crosslink thick filaments to Actin filaments. *J. Muscle Res. Cell Motil.* 13: 206-218.
4. Labeit, S. and Kolmerer, B. 1995. The complete primary structure of human Nebulin and its correlation to muscle structure. *J. Mol. Biol.* 248: 308-315.
5. Huber, P.A., et al. 1996. Multiple-sited interaction of caldesmon with Ca<sup>2+</sup>-calmodulin. *Biochem. J.* 316: 413-420.
6. Zhang, J.Q., et al. 1996. cDNA cloning of mouse Nebulin. Evidence that the Nebulin-coding sequence is highly conserved among vertebrates. *Eur. J. Biochem.* 239: 835-841.

## CHROMOSOMAL LOCATION

Genetic locus: NEB (human) mapping to 2q23.3; Neb (mouse) mapping to 2 C1.1.

## SOURCE

Nebulin (H-300) is a rabbit polyclonal antibody raised against amino acids 1-300 mapping at the N-terminus of Nebulin of human origin.

## PRODUCT

Each vial contains 200 µg IgG in 1.0 ml of PBS with < 0.1% sodium azide and 0.1% gelatin.

## STORAGE

Store at 4° C, **\*\*DO NOT FREEZE\*\***. Stable for one year from the date of shipment. Non-hazardous. No MSDS required.

## PROTOCOLS

See our web site at [www.scbt.com](http://www.scbt.com) or our catalog for detailed protocols and support products.

## APPLICATIONS

Nebulin (H-300) is recommended for detection of nebulin of mouse, rat and human origin by Western Blotting (starting dilution 1:200, dilution range 1:100-1:1000), immunoprecipitation [1-2 µg per 100-500 µg of total protein (1 ml of cell lysate)], immunofluorescence (starting dilution 1:50, dilution range 1:50-1:500), immunohistochemistry (including paraffin-embedded sections) (starting dilution 1:50, dilution range 1:50-1:500) and solid phase ELISA (starting dilution 1:30, dilution range 1:30-1:3000).

Suitable for use as control antibody for Nebulin siRNA (h): sc-43210, Nebulin shRNA Plasmid (h): sc-43210-SH and Nebulin shRNA (h) Lentiviral Particles: sc-43210-V.

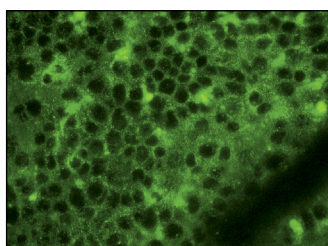
Molecular Weight of Nebulin: 700-900 kDa.

Positive Controls: human heart extract: sc-363763.

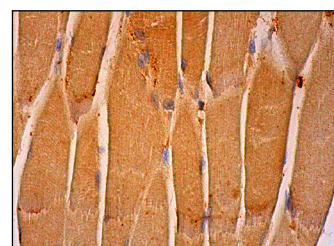
## RECOMMENDED SECONDARY REAGENTS

To ensure optimal results, the following support (secondary) reagents are recommended: 1) Western Blotting: use goat anti-rabbit IgG-HRP: sc-2004 (dilution range: 1:2000-1:100,000) or Cruz Marker™ compatible goat anti-rabbit IgG-HRP: sc-2030 (dilution range: 1:2000-1:5000), Cruz Marker™ Molecular Weight Standards: sc-2035, TBS Blotto A Blocking Reagent: sc-2333 and Western Blotting Luminol Reagent: sc-2048. 2) Immunoprecipitation: use Protein A/G PLUS-Agarose: sc-2003 (0.5 ml agarose/2.0 ml). 3) Immunofluorescence: use goat anti-rabbit IgG-FITC: sc-2012 (dilution range: 1:100-1:400) or goat anti-rabbit IgG-TR: sc-2780 (dilution range: 1:100-1:400) with UltraCruz™ Mounting Medium: sc-24941. 4) Immunohistochemistry: use ImmunoCruz™: sc-2051 or ABC: sc-2018 rabbit IgG Staining Systems.

## DATA



Nebulin (H-300): sc-28286. Immunofluorescence staining of normal mouse spleen frozen section showing cytoplasmic staining.



Nebulin (H-300): sc-28286. Immunoperoxidase staining of formalin fixed, paraffin-embedded human skeletal muscle tissue showing cytoplasmic staining of myocytes.

## RESEARCH USE

For research use only, not for use in diagnostic procedures.



Try **Nebulin (1F4): sc-293370**, our highly recommended monoclonal alternative to Nebulin (H-300).