

S-100A10 (E-15): sc-28430

BACKGROUND

The S100 family of calcium-activated proteins interact with a range of target proteins to modulate biological signaling pathways. Numerous cancer cell lines overexpress the plasminogen receptor S100A10 on the extracellular cell surface, where it forms a heterotetrameric complex with Annexin II, though this association is not required for plasma membrane localization, or binding and activation of plasminogen. Additionally, S-100A10 acts as a cellular chaperone for hepatitis B (Hep B) virus polymerase. Hep B virus polymerase normally localizes to the cytoplasm only, though in the presence of S-100A10 a portion relocates to the nucleus, implying a role for S-100A10 and intracellular calcium in the process of viral replication.

REFERENCES

- Gattaz, W.F., et al. 2000. Decreased S100- β protein in schizophrenia: preliminary evidence. *Schizo. Res.* 43: 91-5.
- Ruse, M., et al. 2001. S100A7, S100A10, and S100A11 are transglutaminase substrates. *Biochemistry.* 40: 3167-3173.

CHROMOSOMAL LOCATION

Genetic locus: S100A10 (human) mapping to 1q21.3; S100a10 (mouse) mapping to 3 F2.1.

SOURCE

S-100A10 (E-15) is an affinity purified goat polyclonal antibody raised against a peptide mapping within an internal region S-100A10 of human origin.

PRODUCT

Each vial contains 200 μ g IgG in 1.0 ml of PBS with < 0.1% sodium azide and 0.1% gelatin.

Blocking peptide available for competition studies, sc-28430 P, (100 μ g peptide in 0.5 ml PBS containing < 0.1% sodium azide and 0.2% BSA).

APPLICATIONS

S-100A10 (E-15) is recommended for detection of S-100A10 of mouse, rat and human origin by Western Blotting (starting dilution 1:200, dilution range 1:100-1:1000), immunoprecipitation [1-2 μ g per 100-500 μ g of total protein (1 ml of cell lysate)], immunofluorescence (starting dilution 1:50, dilution range 1:50-1:500) and solid phase ELISA (starting dilution 1:30, dilution range 1:30-1:3000).

S-100A10 (E-15) is also recommended for detection of S-100A10 in additional species, including equine, canine, bovine and porcine.

Suitable for use as control antibody for S-100A10 siRNA (h): sc-44084, S-100A10 siRNA (m): sc-60023, S-100A10 shRNA Plasmid (h): sc-44084-SH, S-100A10 shRNA Plasmid (m): sc-60023-SH, S-100A10 shRNA (h) Lentiviral Particles: sc-44084-V and S-100A10 shRNA (m) Lentiviral Particles: sc-60023-V.

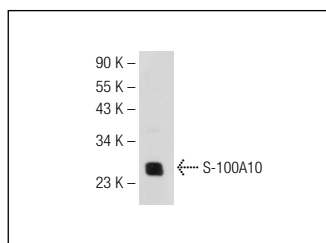
Molecular Weight of S-100A10: 23 kDa.

Positive Controls: HeLa whole cell lysate: sc-2200 or mouse brain extract: sc-2253.

RECOMMENDED SECONDARY REAGENTS

To ensure optimal results, the following support (secondary) reagents are recommended: 1) Western Blotting: use donkey anti-goat IgG-HRP: sc-2020 (dilution range: 1:2000-1:100,000) or Cruz Marker™ compatible donkey anti-goat IgG-HRP: sc-2033 (dilution range: 1:2000-1:5000), Cruz Marker™ Molecular Weight Standards: sc-2035, TBS Blotto A Blocking Reagent: sc-2333 and Western Blotting Luminol Reagent: sc-2048. 2) Immunoprecipitation: use Protein A/G PLUS-Agarose: sc-2003 (0.5 ml agarose/2.0 ml). 3) Immunofluorescence: use donkey anti-goat IgG-FITC: sc-2024 (dilution range: 1:100-1:400) or donkey anti-goat IgG-TR: sc-2783 (dilution range: 1:100-1:400) with UltraCruz™ Mounting Medium: sc-24941.

DATA



S-100A10 (E-15): sc-28430. Western blot analysis of S-100A10 expression in HeLa whole cell lysate.

STORAGE

Store at 4° C, ****DO NOT FREEZE****. Stable for one year from the date of shipment. Non-hazardous. No MSDS required.

RESEARCH USE

For research use only, not for use in diagnostic procedures.

PROTOCOLS

See our web site at www.scbt.com or our catalog for detailed protocols and support products.

MONOS
Satisfaction
Guaranteed

Try **S-100A10 (4E7E10): sc-81153**, our highly recommended monoclonal alternative to S-100A10 (E-15).