

# connexin 26/30/32 (FL-226): sc-28659

## BACKGROUND

The connexin family of proteins form hexameric complexes called "connexons" that facilitate movement of low molecular weight proteins between cells via gap junctions. Connexin proteins share a common topology of four transmembrane  $\alpha$ -helical domains, two extracellular loops, a cytoplasmic loop, and cytoplasmic N- and C-termini. Each of the approximately 20 connexin isoforms produces channels with distinct permeabilities and electrical and chemical sensitivities; therefore, one connexin usually cannot fully substitute for another. Consequently, a wide variety of malignant phenotypes associate with decreased connexin expression and gap junction communication, dependent on the particular connexin that is effected. Approximately half the cases of autosomal recessive non-syndromic hearing loss and a significant proportion of sporadic hearing loss can be linked to mutations in the gene encoding connexin 26, while mutations in the gene encoding connexin 32 are the cause of Charcot-Marie-Tooth disease. Defects in the gene encoding connexin 30 are the cause of ectodermal dysplasia type 2 (ED2) and non-syndromic sensorineural deafness autosomal dominant type 3 (DFNA3), the former of which is characterized by abnormal development of ectodermal structures (such as skin and nails).

## SOURCE

connexin 26/30/32 (FL-226) is a rabbit polyclonal antibody raised against amino acids 1-226 representing full length connexin 26 of human origin.

## PRODUCT

Each vial contains 200  $\mu$ g IgG in 1.0 ml of PBS with < 0.1% sodium azide and 0.1% gelatin.

## STORAGE

Store at 4° C, \*\*DO NOT FREEZE\*\*. Stable for one year from the date of shipment. Non-hazardous. No MSDS required.

## APPLICATIONS

connexin 26/30/32 (FL-226) is recommended for detection of connexin 26, 30, 32 and 30.3 of mouse, rat and human origin by Western Blotting (starting dilution 1:200, dilution range 1:100-1:1000), immunoprecipitation [1-2  $\mu$ g per 100-500  $\mu$ g of total protein (1 ml of cell lysate)], immunofluorescence (starting dilution 1:50, dilution range 1:50-1:500), immunohistochemistry (including paraffin-embedded sections) (starting dilution 1:50, dilution range 1:50-1:500) and solid phase ELISA (starting dilution 1:30, dilution range 1:30-1:3000); partially cross-reactive with other connexin family members.

connexin 26/30/32 (FL-226) is also recommended for detection of connexin 26, 30, 32 and 30.3 in additional species, including equine, canine and bovine.

Molecular Weight of connexin 26: 26 kDa.

Molecular Weight of connexin 30: 30 kDa.

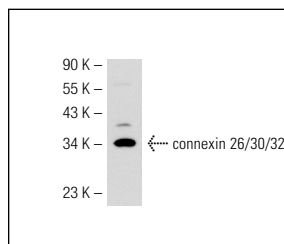
Molecular Weight of connexin 32: 32 kDa.

Positive Controls: Hep G2 cell lysate: sc-2227.

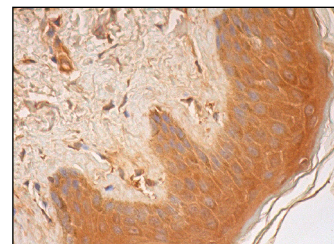
## RECOMMENDED SECONDARY REAGENTS

To ensure optimal results, the following support (secondary) reagents are recommended: 1) Western Blotting: use goat anti-rabbit IgG-HRP: sc-2004 (dilution range: 1:2000-1:100,000) or Cruz Marker<sup>™</sup> compatible goat anti-rabbit IgG-HRP: sc-2030 (dilution range: 1:2000-1:5000), Cruz Marker<sup>™</sup> Molecular Weight Standards: sc-2035, TBS Blotto A Blocking Reagent: sc-2333 and Western Blotting Luminol Reagent: sc-2048. 2) Immunoprecipitation: use Protein A/G PLUS-Agarose: sc-2003 (0.5 ml agarose/2.0 ml). 3) Immunofluorescence: use goat anti-rabbit IgG-FITC: sc-2012 (dilution range: 1:100-1:400) or goat anti-rabbit IgG-TR: sc-2780 (dilution range: 1:100-1:400) with UltraCruz<sup>™</sup> Mounting Medium: sc-24941. 4) Immunohistochemistry: use ImmunoCruz<sup>™</sup>: sc-2051 or ABC: sc-2018 rabbit IgG Staining Systems.

## DATA



connexin 26/30/32 (FL-226): sc-28659. Western blot analysis of connexin 26/30/32 expression in Hep G2 whole cell lysate.



connexin 26/30/32 (FL-226): sc-28659. Immunoperoxidase staining of formalin fixed, paraffin-embedded human skin tissue showing cytoplasmic staining of glandular cells, keratinocytes, Langerhans cells and melanocytes.

## RESEARCH USE

For research use only, not for use in diagnostic procedures.

## PROTOCOLS

See our web site at [www.scbt.com](http://www.scbt.com) or our catalog for detailed protocols and support products.

**MONOS**  
Satisfaction  
Guaranteed

Try **connexin 26 (1C6): sc-293223**, our highly recommended monoclonal alternative to connexin 26/30/32 (FL-226).