

Elf-1 (H-169): sc-28682

BACKGROUND

Ets-1 is the prototype member of a family of genes identified on the basis of homology to the v-Ets oncogene isolated from the E26 erythroblastosis virus. This family of genes currently includes Ets-1, Ets-2, Erg-1-3, Elk-1, Elf-1, Elf-5, NERF, PU.1, PEA3, ERM, FEV, ER81, Fli-1, TEL, Spi-B, ESE-1, ESE-3A, Net, ABT1 and ERF. Members of the Ets gene family exhibit varied patterns of tissue expression, and share a highly conserved carboxy-terminal domain containing a sequence related to the SV40 large T antigen nuclear localization signal sequence. This conserved domain is essential for Ets-1 binding to DNA and is likely to be responsible for the DNA-binding activity of all members of the Ets gene family. Elf-1 is a lymphoid-specific member of the Ets family that has been shown to regulate inducible gene expression during T cell activation. Elf-1 contains a sequence motif that is highly related to the Rb-binding sites common to several viral oncoproteins and binds to the pocket region of Rb both *in vivo* and *in vitro*.

CHROMOSOMAL LOCATION

Genetic locus: ELF1 (human) mapping to 13q14.11; Elf1 (mouse) mapping to 14 D3.

SOURCE

Elf-1 (H-169) is a rabbit polyclonal antibody raised against amino acids 451-619 mapping at the C-terminus of Elf-1 of human origin.

PRODUCT

Each vial contains 200 µg IgG in 1.0 ml of PBS with < 0.1% sodium azide and 0.1% gelatin. Also available as TransCruz reagent for Gel Supershift and ChIP applications, sc-28682 X, 200 µg/0.1 ml.

APPLICATIONS

Elf-1 (H-169) is recommended for detection of Elf-1 of mouse, rat and human origin by Western Blotting (starting dilution 1:200, dilution range 1:100-1:1000), immunoprecipitation [1-2 µg per 100-500 µg of total protein (1 ml of cell lysate)], immunofluorescence (starting dilution 1:50, dilution range 1:50-1:500) and solid phase ELISA (starting dilution 1:30, dilution range 1:30-1:3000).

Elf-1 (H-169) is also recommended for detection of Elf-1 in additional species, including equine and canine.

Suitable for use as control antibody for Elf-1 siRNA (h): sc-37837, Elf-1 siRNA (m): sc-37838, Elf-1 shRNA Plasmid (h): sc-37837-SH, Elf-1 shRNA Plasmid (m): sc-37838-SH, Elf-1 shRNA (h) Lentiviral Particles: sc-37837-V and Elf-1 shRNA (m) Lentiviral Particles: sc-37838-V.

Elf-1 (H-169) X TransCruz antibody is recommended for Gel Supershift and ChIP applications.

Molecular Weight of Elf-1 cytoplasmic: 80 kDa.

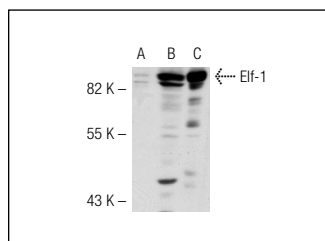
Molecular Weight of Elf-1 nuclear: 98 kDa.

Positive Controls: Elf-1 (h): 293T Lysate: sc-114811, A-431 nuclear extract: sc-2122 or HeLa whole cell lysate: sc-2200.

RECOMMENDED SECONDARY REAGENTS

To ensure optimal results, the following support (secondary) reagents are recommended: 1) Western Blotting: use goat anti-rabbit IgG-HRP: sc-2004 (dilution range: 1:2000-1:100,000) or Cruz Marker™ compatible goat anti-rabbit IgG-HRP: sc-2030 (dilution range: 1:2000-1:5000), Cruz Marker™ Molecular Weight Standards: sc-2035, TBS Blotto A Blocking Reagent: sc-2333 and Western Blotting Luminol Reagent: sc-2048. 2) Immunoprecipitation: use Protein A/G PLUS-Agarose: sc-2003 (0.5 ml agarose/2.0 ml). 3) Immunofluorescence: use goat anti-rabbit IgG-FITC: sc-2012 (dilution range: 1:100-1:400) or goat anti-rabbit IgG-TR: sc-2780 (dilution range: 1:100-1:400) with UltraCruz™ Mounting Medium: sc-24941.

DATA



Elf-1 (H-169): sc-28682. Western blot analysis of Elf-1 expression in non-transfected 293T: sc-117752 (A), human Elf-1 transfected 293T: sc-114811 (B) and HeLa (C) whole cell lysates.

STORAGE

Store at 4° C, ****DO NOT FREEZE****. Stable for one year from the date of shipment. Non-hazardous. No MSDS required.

RESEARCH USE

For research use only, not for use in diagnostic procedures.

PROTOCOLS

See our web site at www.scbt.com or our catalog for detailed protocols and support products.

MONOS
Satisfaction
Guaranteed

Try **Elf-1 (C-4): sc-133096** or **Elf-1 (B-9): sc-133210**, our highly recommended monoclonal alternatives to Elf-1 (H-169).