

## ETO-2 (H-63): sc-28694

### BACKGROUND

ETO and ETO-2, which are alternatively designated MTG8 and MTG16, respectively, are members of the ETO transcription factor family. These transcription factors are characterized by a zinc-finger domain and four conserved domains, of which domain II is required for dimerization between family members. ETO and ETO-2 may function to mediate interactions between DNA binding proteins and transcriptional regulators, such as N-CoR. Frequently, the t(8;21) translocation of ETO produces the AML-1/ETO oncoprotein, which consists of the first 177 amino acids of AML-1 and all but the first 30 amino acids of ETO. AML-1/ETO expression is observed in 12–15% of acute myelogenous, M2 subtype leukemias. The AML-1/ETO fusion proteins associate with multimeric N-CoR/mSin3/HDAC1 complexes, block differentiation and induce transcriptional repression by altering chromatin remodeling.

### REFERENCES

1. Erickson, P.F., et al. 1994. The ETO portion of acute myeloid leukemia t(8;21) fusion transcript encodes a highly evolutionarily conserved, putative transcription factor. *Cancer Res.* 54: 1782-1786.
2. Erickson, P.F., et al. 1996. ETO and AML1 phosphoproteins are expressed in CD34+ hematopoietic progenitors: implications for t(8;21) leukemogenesis and monitoring residual disease. *Blood* 88: 1813-1823.

### SOURCE

ETO-2 (H-63) is a rabbit polyclonal antibody raised against amino acids 591-653 mapping at the C-terminus of ETO-2 of human origin.

### PRODUCT

Each vial contains 200 µg IgG in 1.0 ml of PBS with < 0.1% sodium azide and 0.1% gelatin.

Available as TransCruz reagent for Gel Supershift and ChIP applications, sc-28694 X, 200 µg/0.1 ml.

### APPLICATIONS

ETO-2 (H-63) is recommended for detection of ETO-2 of mouse, rat and human origin by Western Blotting (starting dilution 1:200, dilution range 1:100-1:1000), immunoprecipitation [1-2 µg per 100-500 µg of total protein (1 ml of cell lysate)], immunofluorescence (starting dilution 1:50, dilution range 1:50-1:500) and solid phase ELISA (starting dilution 1:30, dilution range 1:30-1:3000).

Suitable for use as control antibody for ETO-2 siRNA (h): sc-35344, ETO-2 siRNA (m): sc-35345, ETO-2 shRNA Plasmid (h): sc-35344-SH, ETO-2 shRNA Plasmid (m): sc-35345-SH, ETO-2 shRNA (h) Lentiviral Particles: sc-35344-V and ETO-2 shRNA (m) Lentiviral Particles: sc-35345-V.

ETO-2 (H-63) X TransCruz antibody is recommended for Gel Supershift and ChIP applications.

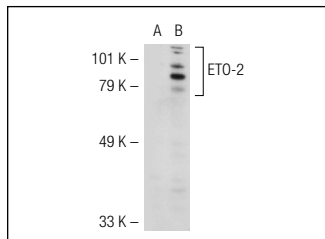
Molecular Weight of ETO-2: 76 kDa.

Positive Controls: human tonsil, AML-193 whole cell lysate or CCRF-CEM cell lysate: sc-2225.

### RECOMMENDED SECONDARY REAGENTS

To ensure optimal results, the following support (secondary) reagents are recommended: 1) Western Blotting: use goat anti-rabbit IgG-HRP: sc-2004 (dilution range: 1:2000-1:100,000) or Cruz Marker™ compatible goat anti-rabbit IgG-HRP: sc-2030 (dilution range: 1:2000-1:5000), Cruz Marker™ Molecular Weight Standards: sc-2035, TBS Blotto A Blocking Reagent: sc-2333 and Western Blotting Luminol Reagent: sc-2048. 2) Immunoprecipitation: use Protein A/G PLUS-Agarose: sc-2003 (0.5 ml agarose/2.0 ml). 3) Immunofluorescence: use goat anti-rabbit IgG-FITC: sc-2012 (dilution range: 1:100-1:400) or goat anti-rabbit IgG-TR: sc-2780 (dilution range: 1:100-1:400) with UltraCruz™ Mounting Medium: sc-24941.

### DATA



ETO-2 (H-63): sc-28694. Western blot analysis of ETO-2 expression in non-transfected: sc-117752 (A) and human ETO-2 transfected: sc-116819 (B) 293T whole cell lysates.

### STORAGE

Store at 4° C, **\*\*DO NOT FREEZE\*\***. Stable for one year from the date of shipment. Non-hazardous. No MSDS required.

### RESEARCH USE

For research use only, not for use in diagnostic procedures.

### PROTOCOLS

See our web site at [www.scbt.com](http://www.scbt.com) or our catalog for detailed protocols and support products.



Try **ETO-2 (C-12): sc-373691** or **ETO-2 (D-4): sc-166058**, our highly recommended monoclonal alternatives to ETO-2 (H-63).