

# CLIM-1/2 (H-300): sc-28695

## BACKGROUND

CLIM-1/2 (LIM domain-binding factor-2, LDB1, CLP36, ELFIN, CLP-36, enigma homolog) is a LIM domain-containing protein. LIM domain-containing proteins are capable of binding to a variety of transcription factors. They are likely to function as enhancers, to bring together diverse transcription factors and form higher order activation complexes, or to block formation of such complexes. Human CLIM-1 is a cytoplasmic protein. CLIM-1 northern blot analysis reveals expression of an approximately 2.0-kb transcript most abundant in heart and skeletal muscle. CLIM-1 interacts with the C-terminal EF hand region of  $\alpha$ -actinin-2 through a LIM domain. CLIM-1 localizes to actin stress fibers in nonmuscle cells and associates with alpha-actinin via its PDZ-domain.

## REFERENCES

1. Semina, E.V., et al. 1998. Cloning and chromosomal localization of two novel human genes encoding LIM-domain binding factors CLIM-1 and CLIM-2/LDB1/NLI. *Mamm. Genome* 9: 921-924.
2. Sugihara, T.M., et al. 1998. Mouse deformed epidermal autoregulatory factor 1 recruits a LIM domain factor, LMO-4, and CLIM coregulators. *Proc Natl. Acad. Sci. USA* 95: 15418-15423.

## CHROMOSOMAL LOCATION

Genetic locus: LDB2 (human) mapping to 4p15.32, LDB1 (human) mapping to 10q24.32; Ldb2 (mouse) mapping to 5 B3, Ldb1 (mouse) mapping to 19 C3.

## SOURCE

CLIM-1/2 (H-300) is a rabbit polyclonal antibody raised against amino acids 1-300 mapping at the N-terminus of CLIM-1 of human origin.

## PRODUCT

Each vial contains 200  $\mu$ g IgG in 1.0 ml of PBS with < 0.1% sodium azide and 0.1% gelatin. Also available as TransCruz reagent for Gel Supershift and ChIP applications, sc-28695 X, 200  $\mu$ g/0.1 ml.

## APPLICATIONS

CLIM-1/2 (H-300) is recommended for detection of CLIM-1 and CLIM-2 of mouse, rat and human origin by Western Blotting (starting dilution 1:200, dilution range 1:100-1:1000), immunoprecipitation [1-2  $\mu$ g per 100-500  $\mu$ g of total protein (1 ml of cell lysate)], immunofluorescence (starting dilution 1:50, dilution range 1:50-1:500), immunohistochemistry (including paraffin-embedded sections) (starting dilution 1:50, dilution range 1:50-1:500) and solid phase ELISA (starting dilution 1:30, dilution range 1:30-1:3000).

CLIM-1/2 (H-300) is also recommended for detection of CLIM-1 and CLIM-2 in additional species, including equine, canine and avian.

CLIM-1/2 (H-300) X TransCruz antibody is recommended for Gel Supershift and ChIP applications.

Molecular Weight of CLIM-1: 36 kDa.

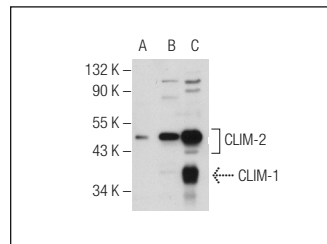
Molecular Weight of CLIM-2: 46 kDa.

Positive Controls: CCRF-CEM nuclear extract: sc-2146, HeLa nuclear extract: sc-2120 or CLIM-2 (h): 293 Lysate: sc-176386.

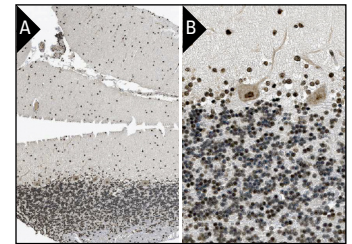
## RECOMMENDED SECONDARY REAGENTS

To ensure optimal results, the following support (secondary) reagents are recommended: 1) Western Blotting: use goat anti-rabbit IgG-HRP: sc-2004 (dilution range: 1:2000-1:100,000) or Cruz Marker™ compatible goat anti-rabbit IgG-HRP: sc-2030 (dilution range: 1:2000-1:5000), Cruz Marker™ Molecular Weight Standards: sc-2035, TBS Blotto A Blocking Reagent: sc-2333 and Western Blotting Luminol Reagent: sc-2048. 2) Immunoprecipitation: use Protein A/G PLUS-Agarose: sc-2003 (0.5 ml agarose/2.0 ml). 3) Immunofluorescence: use goat anti-rabbit IgG-FITC: sc-2012 (dilution range: 1:100-1:400) or goat anti-rabbit IgG-TR: sc-2780 (dilution range: 1:100-1:400) with UltraCruz™ Mounting Medium: sc-24941. 4) Immunohistochemistry: use ImmunoCruz™: sc-2051 or ABC: sc-2018 rabbit IgG Staining Systems.

## DATA



CLIM-1/2 (H-300): sc-28695. Western blot analysis of CLIM-2 expression in non-transfected: sc-117752 (A) and human CLIM-2 transfected: sc-176386 (B) 293T whole cell lysates and HeLa nuclear extract (C).



CLIM-1/2 (H-300): sc-28695. Immunoperoxidase staining of formalin fixed, paraffin-embedded human cerebellum tissue showing nuclear staining of cells in granular and molecular layers and Purkinje cells at low (A) and high (B) magnification. Kindly provided by The Swedish Human Protein Atlas (HPA) program.

## STORAGE

Store at 4° C, **\*\*DO NOT FREEZE\*\***. Stable for one year from the date of shipment. Non-hazardous. No MSDS required.

## RESEARCH USE

For research use only, not for use in diagnostic procedures.

## PROTOCOLS

See our web site at [www.scbt.com](http://www.scbt.com) or our catalog for detailed protocols and support products.



Try **CLIM-1/2 (A-3): sc-376030** or **CLIM-1/2 (A-6): sc-376031**, our highly recommended monoclonal alternatives to CLIM-1/2 (H-300).