

Dia 1 (H-58): sc-28775

BACKGROUND

Dia 1, also known as DIAPH1 (diaphanous homolog 1) or DRF1, a mammalian homolog of the *Drosophila* diaphanous gene, belongs to a family of formin homology (FH) proteins which are characterized by having tandemly aligned FH1 (formin homology 1) and FH2 (formin homology 2) domains in their carboxy terminal regions. Dia 1 contains a DAD (diaphanous autoregulatory) domain, which is involved in the elongation of actin filaments, and a GBD/FH3 (Rho GTPase-binding/formin homology 3) domain, which interacts with the DAD domain via autoinhibitory interactions to regulate the activation of Dia 1. Dia 1 is required for the assembly of F-actin structures, and regulates the polymerization and depolymerization of actin filaments. Localizing to the cell membrane, Dia 1 is expressed in a wide range of tissues, including brain, heart, lung and kidney. Defects to the gene encoding Dia 1 have been linked to deafness autosomal dominant type 1 (DFNA1), a disorder characterized by sensorineural hearing loss.

CHROMOSOMAL LOCATION

Genetic locus: DIAPH1 (human) mapping to 5q31.3; Diap1 (mouse) mapping to 18 B3.

SOURCE

Dia 1 (H-58) is a rabbit polyclonal antibody raised against amino acids 1191-1248 mapping at the C-terminus of diaphanous 1 (Dia 1) of human origin.

PRODUCT

Each vial contains 200 µg IgG in 1.0 ml of PBS with < 0.1% sodium azide and 0.1% gelatin.

STORAGE

Store at 4° C, ****DO NOT FREEZE****. Stable for one year from the date of shipment. Non-hazardous. No MSDS required.

RESEARCH USE

For research use only, not for use in diagnostic procedures.

APPLICATIONS

Dia 1 (H-58) is recommended for detection of Dia 1 of mouse, rat and human origin by Western Blotting (starting dilution 1:200, dilution range 1:100-1:1000), immunoprecipitation [1-2 µg per 100-500 µg of total protein (1 ml of cell lysate)], immunofluorescence (starting dilution 1:50, dilution range 1:50-1:500), immunohistochemistry (including paraffin-embedded sections) (starting dilution 1:50, dilution range 1:50-1:500) and solid phase ELISA (starting dilution 1:30, dilution range 1:30-1:3000).

Suitable for use as control antibody for Dia 1 siRNA (h): sc-35190, Dia 1 siRNA (m): sc-35191, Dia 1 shRNA Plasmid (h): sc-35190-SH, Dia 1 shRNA Plasmid (m): sc-35191-SH, Dia 1 shRNA (h) Lentiviral Particles: sc-35190-V and Dia 1 shRNA (m) Lentiviral Particles: sc-35191-V.

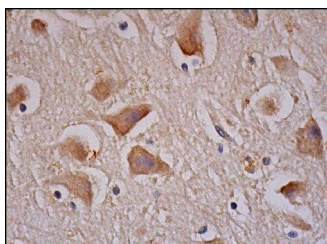
Molecular Weight of Dia 1: 140 kDa.

Positive Controls: KNRK whole cell lysate: sc-2214, HeLa whole cell lysate: sc-2200 or HeLa + nocodazole cell lysate: sc-2274.

RECOMMENDED SECONDARY REAGENTS

To ensure optimal results, the following support (secondary) reagents are recommended: 1) Western Blotting: use goat anti-rabbit IgG-HRP: sc-2004 (dilution range: 1:2000-1:100,000) or Cruz Marker™ compatible goat anti-rabbit IgG-HRP: sc-2030 (dilution range: 1:2000-1:5000), Cruz Marker™ Molecular Weight Standards: sc-2035, TBS Blotto A Blocking Reagent: sc-2333 and Western Blotting Luminol Reagent: sc-2048. 2) Immunoprecipitation: use Protein A/G PLUS-Agarose: sc-2003 (0.5 ml agarose/2.0 ml). 3) Immunofluorescence: use goat anti-rabbit IgG-FITC: sc-2012 (dilution range: 1:100-1:400) or goat anti-rabbit IgG-TR: sc-2780 (dilution range: 1:100-1:400) with UltraCruz™ Mounting Medium: sc-24941. 4) Immunohistochemistry: use ImmunoCruz™: sc-2051 or ABC: sc-2018 rabbit IgG Staining Systems.

DATA



Dia 1 (H-58): sc-28775. Immunoperoxidase staining of formalin fixed, paraffin-embedded human cerebral cortex tissue showing cytoplasmic staining of neuronal cells and glial cells.

PROTOCOLS

See our web site at www.scbt.com or our catalog for detailed protocols and support products.


 MONOS
 Satisfaction
 Guaranteed

Try **Dia 1 (E-4): sc-373807** or **Dia 1 (D-3): sc-373895**, our highly recommended monoclonal alternatives to Dia 1 (H-58).