

TFPI-2 (M-110): sc-28863

BACKGROUND

The extrinsic pathway of blood coagulation is initiated by contact of plasma factor VII with tissue factor, a cellular membrane glycoprotein that normally is segregated from the bloodstream but can be exposed after tissue injury or newly synthesized in endothelial cells or leukocytes after stimulation by endotoxin and cytokines. Inhibition of Factor VIIa tissue factor activity requires a plasma component (tissue factor pathway inhibitor (TFPI), lipoprotein-associated coagulation inhibitor (LACI) or extrinsic pathway inhibitor (EPI)) and factor Xa. TFPI directly inhibits factor Xa, and, in an Xa-dependent fashion, also inhibits the Factor VIIa tissue factor catalytic complex. TFPI is a multivalent, Kunitz-type proteinase inhibitor that circulates in association with plasma lipoproteins VLDL, LDL, and HDL. TFPI-2 (also known as placental protein 5) is a related glycoprotein that was originally isolated from human placenta.

REFERENCES

1. Broze, G.J., Jr. and Miletich, J.P. 1987. Characterization of the inhibition of tissue factor in serum. *Blood* 69: 150-155.
2. Rao, L.V. and Rapaport, S.I. 1987. Studies of a mechanism inhibiting the initiation of the extrinsic pathway of coagulation. *Blood* 69: 645-651.
3. Davie, E.W., et al. 1991. The coagulation cascade: initiation, maintenance, and regulation. *Biochemistry* 30: 10363-10370.
4. Girard, T.J., et al. 1991. Structure of the human lipoprotein-associated coagulation inhibitor gene. Intro/exon gene organization and localization of the gene to chromosome 2. *J. Biol. Chem.* 266: 5036-5041.
5. Enyoji, K., et al. 1993. Human tissue factor pathway inhibitor (TFPI) gene: complete genomic structure and localization on the genetic map of chromosome 2q. *Genomics* 17: 423-428.
6. Kisiel, W., et al. 1994. Evidence that a second human tissue factor pathway inhibitor (TFPI-2) and human placental protein 5 are equivalent. *Blood* 84: 4384-4385.
7. Miyagi, Y., et al. 1996. Assignment of the human PP5/TFPI-2 gene to 7q22 by FISH and PCR-based human/rodent cell hybrid mapping panel analysis. *Genomics* 35: 267-268.

CHROMOSOMAL LOCATION

Genetic locus: TFPI2 (human) mapping to 7q21.3; Tfp2 (mouse) mapping to 6 A1.

SOURCE

TFPI-2 (M-110) is a rabbit polyclonal antibody raised against amino acids 71-180 mapping within an internal region of TFPI-2 of mouse origin.

PRODUCT

Each vial contains 200 µg IgG in 1.0 ml of PBS with < 0.1% sodium azide and 0.1% gelatin.

STORAGE

Store at 4° C, ****DO NOT FREEZE****. Stable for one year from the date of shipment. Non-hazardous. No MSDS required.

APPLICATIONS

TFPI-2 (M-110) is recommended for detection of TFPI-2 of mouse, rat and, to a lesser extent, human origin by Western Blotting (starting dilution 1:200, dilution range 1:100-1:1000), immunoprecipitation [1-2 µg per 100-500 µg of total protein (1 ml of cell lysate)], immunofluorescence (starting dilution 1:50, dilution range 1:50-1:500) and solid phase ELISA (starting dilution 1:30, dilution range 1:30-1:3000).

Suitable for use as control antibody for TFPI-2 siRNA (h): sc-41062, TFPI-2 siRNA (m): sc-41063, TFPI-2 shRNA Plasmid (h): sc-41062-SH, TFPI-2 shRNA Plasmid (m): sc-41063-SH, TFPI-2 shRNA (h) Lentiviral Particles: sc-41062-V and TFPI-2 shRNA (m) Lentiviral Particles: sc-41063-V.

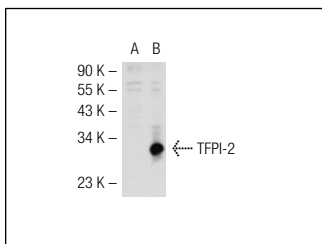
Molecular Weight of TFPI-2: 32 kDa.

Positive Controls: TFPI-2 (m): 293T Lysate: sc-124013 or KNRK whole cell lysate: sc-2214 or rat placenta extract: sc-364808.

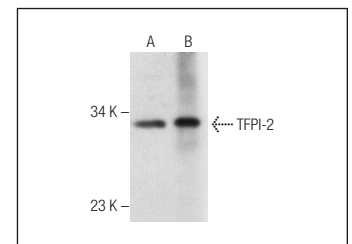
RECOMMENDED SECONDARY REAGENTS

To ensure optimal results, the following support (secondary) reagents are recommended: 1) Western Blotting: use goat anti-rabbit IgG-HRP: sc-2004 (dilution range: 1:2000-1:100,000) or Cruz Marker™ compatible goat anti-rabbit IgG-HRP: sc-2030 (dilution range: 1:2000-1:5000), Cruz Marker™ Molecular Weight Standards: sc-2035, TBS Blotto A Blocking Reagent: sc-2333 and Western Blotting Luminol Reagent: sc-2048. 2) Immunoprecipitation: use Protein A/G PLUS-Agarose: sc-2003 (0.5 ml agarose/2.0 ml). 3) Immunofluorescence: use goat anti-rabbit IgG-FITC: sc-2012 (dilution range: 1:100-1:400) or goat anti-rabbit IgG-TR: sc-2780 (dilution range: 1:100-1:400) with UltraCruz™ Mounting Medium: sc-24941.

DATA



TFPI-2 (M-110): sc-28863. Western blot analysis of TFPI-2 expression in non-transfected: sc-117752 (A) and mouse TFPI-2 transfected: sc-124013 (B) 293T whole cell lysates.



TFPI-2 (M-110): sc-28863. Western blot analysis of TFPI-2 expression in KNRK whole cell lysate (A) and rat placenta tissue extract (B).

RESEARCH USE

For research use only, not for use in diagnostic procedures.

MONOS
Satisfaction
Guaranteed

Try **TFPI-2 (B-7): sc-48380** or **TFPI-2 (C-3): sc-48369**, our highly recommended monoclonal alternatives to TFPI-2 (M-110).