

## Slit1 (H-137): sc-28944

### BACKGROUND

Secreted leucine-rich repeat-containing proteins 1-3 (Slit1-3) are secreted glycoproteins that influence axonal guidance and mediate normal neural development by acting as high-affinity signaling ligands for the repulsive guidance receptor, Roundabout (Robo). Within the developing central nervous system (CNS) of different vertebrate systems, Slit proteins are expressed in equivalent regions, suggesting a conserved function among vertebrate homologs. Slit is expressed in the midline of the central nervous system in both vertebrates and invertebrates, where it functions as a regulatory factor of mesodermal cell movement during gastrulation. Slit2 is a short range inhibitory guidance cue for retinal ganglion cell (RGC) axons that may mediate spatial progression of RGCs.

### REFERENCES

- Rothberg, J.M., Jacobs, J.R., Goodman, C.S., Artavanis-Tsakonas, S., 1990. slit: an extracellular protein necessary for development of midline glia and commissural axon pathways contains both EGF and LRR domains. *Genes Dev.* 4: 2169-2187.
- Holmes, G.P., Negus, K., Burridge, L., Raman, S., Algar, E., Yamada, T. and Little, M.H. 1998. Distinct but overlapping expression patterns of two vertebrate slit homologs implies functional roles in CNS development and organogenesis. *Mech. Dev.* 79: 57-72.
- Brose, K., Bland, K.S., Wang, K.H., Arnott, D., Henzel, W., Goodman, C.S., Tessier-Lavigne, M. and Kidd, T. 1999. Slit proteins bind Robo receptors and have an evolutionarily conserved role in repulsive axon guidance. *Cell* 96: 795-806.
- Erskine, L., Williams, S. E., Brose, K., Kidd, T., Rachel, R.A., Goodman, C.S., Tessier-Lavigne, M. and Mason, C.A. 2000. Retinal ganglion cell axon guidance in the mouse optic chiasm: expression and function of robos and slits. *J. Neurosci.* 20: 4975-4982.

### CHROMOSOMAL LOCATION

Genetic locus: SLIT1 (human) mapping to 10q24.1; Slit1 (mouse) mapping to 19 C3.

### SOURCE

Slit1 (H-137) is a rabbit polyclonal antibody raised against amino acids 1391-1527 mapping near the C-terminus of Slit1 of human origin.

### PRODUCT

Each vial contains 200 µg IgG in 1.0 ml of PBS with < 0.1% sodium azide and 0.1% gelatin.

### STORAGE

Store at 4° C, **\*\*DO NOT FREEZE\*\***. Stable for one year from the date of shipment. Non-hazardous. No MSDS required.

### RESEARCH USE

For research use only, not for use in diagnostic procedures.

### APPLICATIONS

Slit1 (H-137) is recommended for detection of Slit1 of mouse, rat and human origin by Western Blotting (starting dilution 1:200, dilution range 1:100-1:1000), immunoprecipitation [1-2 µg per 100-500 µg of total protein (1 ml of cell lysate)], immunofluorescence (starting dilution 1:50, dilution range 1:50-1:500), immunohistochemistry (including paraffin-embedded sections) (starting dilution 1:50, dilution range 1:50-1:500) and solid phase ELISA (starting dilution 1:30, dilution range 1:30-1:3000).

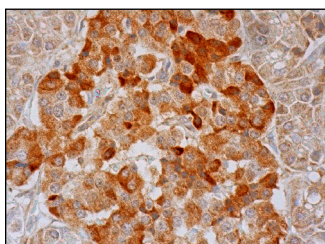
Slit1 (H-137) is also recommended for detection of Slit1 in additional species, including canine and bovine.

Suitable for use as control antibody for Slit1 siRNA (h): sc-42256, Slit1 siRNA (m): sc-42257, Slit1 shRNA Plasmid (h): sc-42256-SH, Slit1 shRNA Plasmid (m): sc-42257-SH, Slit1 shRNA (h) Lentiviral Particles: sc-42256-V and Slit1 shRNA (m) Lentiviral Particles: sc-42257-V.

### RECOMMENDED SECONDARY REAGENTS

To ensure optimal results, the following support (secondary) reagents are recommended: 1) Western Blotting: use goat anti-rabbit IgG-HRP: sc-2004 (dilution range: 1:2000-1:100,000) or Cruz Marker™ compatible goat anti-rabbit IgG-HRP: sc-2030 (dilution range: 1:2000-1:5000), Cruz Marker™ Molecular Weight Standards: sc-2035, TBS Blotto A Blocking Reagent: sc-2333 and Western Blotting Luminol Reagent: sc-2048. 2) Immunoprecipitation: use Protein A/G PLUS-Agarose: sc-2003 (0.5 ml agarose/2.0 ml). 3) Immunofluorescence: use goat anti-rabbit IgG-FITC: sc-2012 (dilution range: 1:100-1:400) or goat anti-rabbit IgG-TR: sc-2780 (dilution range: 1:100-1:400) with UltraCruz™ Mounting Medium: sc-24941. 4) Immunohistochemistry: use ImmunoCruz™: sc-2051 or ABC: sc-2018 rabbit IgG Staining Systems.

### DATA



Slit1 (H-137): sc-28944. Immunoperoxidase staining of formalin fixed, paraffin-embedded human pancreas tissue showing cytoplasmic staining of exocrine glandular cells and Islets of Langerhans.

### PROTOCOLS

See our web site at [www.scbt.com](http://www.scbt.com) or our catalog for detailed protocols and support products.