

# bovine anti-sheep IgG-HRP: sc-2918

## BACKGROUND

Santa Cruz Biotechnology's secondary antibodies are available conjugated to either an enzyme, biotin or fluorophore for use in a variety of antibody-based applications including Western Blot, immunostaining, flow cytometry and ELISA. Secondary antibodies are commonly affinity purified against immobilized whole IgG isotypes, including IgG<sub>1</sub>, IgG<sub>2a</sub>, IgG<sub>2b</sub>, IgG<sub>3</sub> and IgG<sub>4</sub>. Santa Cruz Biotechnology offers a wide selection of secondary antibodies, which are used in conjunction with our Cruz Marker™ molecular weight standards. We also provide specialized secondaries, such as pre-adsorbed secondary antibodies, which are pre-adsorbed with human IgG and mouse IgG for immunoglobulin-rich tissues and cells, F(ab')<sub>2</sub> fragment secondary antibodies that reduce non-specific secondary antibody binding to Fc receptors on the cell surface, and isotype-specific secondary antibodies against IgM, IgA and IgY.

## SOURCE

bovine anti-sheep IgG-HRP is a pre-adsorbed, affinity purified secondary antibody raised in bovine against sheep IgG and conjugated to HRP (horseradish peroxidase).

## PRODUCT

Each vial contains 200 µg mouse and human adsorbed IgG in 0.5 ml of 1X PBS containing 40% glycerol.

## APPLICATIONS

bovine anti-sheep IgG-HRP is recommended for detection of sheep IgG by Western Blotting of immunoglobulin-rich tissues and cells (starting dilution: 1:5000, dilution range 1:5000-1:10000).

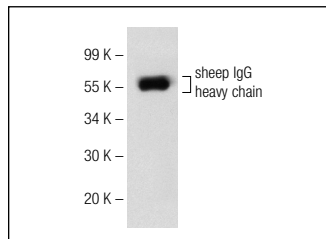
## RECOMMENDED SUPPORT PRODUCTS

- Western Blotting Luminol Reagent, for 2,000 cm<sup>2</sup> membrane area: sc-2048
- RIPA Lysis Buffer, 50 ml, cell lysis buffer with protease inhibitors: sc-24948
- Electrophoresis Sample Buffer, 2X, 25 ml, reducing buffer: sc-24945
- Complete™ Protease Inhibitor Cocktail Tablet, 20 tablets: sc-29130
- Running Buffer, 10X, 1 L, TRIS-Glycine WB running buffer, pH 8.3: sc-24949
- Towbin, with SDS, 10X, 1 L, WB transfer buffer pH 8.3: sc-24954
- Bovine Serum Albumin (BSA), 100 g, blocking/incubation agent: sc-2323
- TBS Blotto A, lyophilized powder in single-use bottle: sc-2333
- UltraCruz™ PVDF Transfer Membrane, 0.45 µm, 30 cm x 3 m roll: sc-3723
- UltraCruz™ Nitrocellulose Pure Transfer Membrane, 0.22 µm, 30 cm x 3 m roll: sc-3718
- UltraCruz™ Tissue Culture Dish, 100 mm polystyrene dish: sc-200286
- UltraCruz™ Cell Scrapers, 25 cm, sterile, 100 per case: sc-213229
- UltraCruz™ Electrophoresis Cell: sc-201625 : runs up to 10 or 15 sample by SDS – PAGE protein electrophoresis
- UltraCruz™ Autoradiography Film, Blue, 8 x 1, 100 sheets: sc-201697
- UltraCruz™ Gel Incubation Trays, 100 per pack: sc-201755 (blue), sc-201756 (green), sc-201757 (pink), sc-201758 (yellow), sc-201759 (orange)

## STORAGE

Store at 4° C, **\*\*DO NOT FREEZE\*\***. Stable for one year from the date of shipment. Non-hazardous. No MSDS required.

## DATA



bovine anti-sheep IgG-HRP: sc-2918. Western blot detection of denatured sheep IgG heavy chain.

## RESEARCH USE

For research use only, not for use in diagnostic procedures.

## PROTOCOLS

See our web site at [www.scbt.com](http://www.scbt.com) or our catalog for detailed protocols and support products.