

SSH3 (H-229): sc-292041

BACKGROUND

SSH3 (slingshot homolog 3), also known as SSH3L, is a 659 amino acid protein that localizes to both the nucleus and cytoplasm and is a human homolog of the *Drosophila* slingshot (*ssh*) protein. Functioning as a protein phosphatase, SSH3 is thought to regulate actin filament dynamics through its control of proteins such as ADF (actin-depolymerizing factor) and Cofilin. The ADF/Cofilin family consists of stimulus-responsive mediators that rapidly depolymerize and disassemble F-actin in a stoichiometric manner and can be deactivated by a variety of kinases. SSH3 acts to catalytically dephosphorylate the ADF/Cofilin proteins, thereby reactivating them and allowing them to resume their control over actin dynamics. SSH3 contains one tyrosine-protein phosphatase domain and is expressed as five isoforms due to alternative splicing events.

REFERENCES

1. Bamburg, J.R. 1999. Proteins of the ADF/cofilin family: essential regulators of actin dynamics. *Annu. Rev. Cell Dev. Biol.* 15: 185-230.
2. Gsponer, J., et al. 2001. Role of native topology investigated by multiple unfolding simulations of four SH3 domains. *J. Mol. Biol.* 309: 285-298.
3. Niwa, R., et al. 2002. Control of actin reorganization by Slingshot, a family of phosphatases that dephosphorylate ADF/cofilin. *Cell* 108: 233-246.
4. Online Mendelian Inheritance in Man, OMIM[™]. 2002. Johns Hopkins University, Baltimore, MD. MIM Number: 606780. World Wide Web URL: <http://www.ncbi.nlm.nih.gov/omim/>
5. Ohta, Y., et al. 2003. Differential activities, subcellular distribution and tissue expression patterns of three members of Slingshot family phosphatases that dephosphorylate cofilin. *Genes Cells* 8: 811-824.
6. Soosairajah, J., et al. 2005. Interplay between components of a novel LIM kinase-slingshot phosphatase complex regulates cofilin. *EMBO J.* 24: 473-486.
7. Kligys, K., et al. 2007. The slingshot family of phosphatases mediates Rac1 regulation of cofilin phosphorylation, laminin-332 organization, and motility behavior of keratinocytes. *J. Biol. Chem.* 282: 32520-32528.

CHROMOSOMAL LOCATION

Genetic locus: SSH3 (human) mapping to 11q13.2; Ssh3 (mouse) mapping to 19 A.

SOURCE

SSH3 (H-229) is a rabbit polyclonal antibody raised against amino acids 431-659 mapping at the C-terminus of SSH3 of human origin.

PRODUCT

Each vial contains 200 µg IgG in 1.0 ml of PBS with < 0.1% sodium azide and 0.1% gelatin.

STORAGE

Store at 4° C, ****DO NOT FREEZE****. Stable for one year from the date of shipment. Non-hazardous. No MSDS required.

APPLICATIONS

SSH3 (H-229) is recommended for detection of SSH3 of human and, to a lesser extent, mouse and rat origin by Western Blotting (starting dilution 1:200, dilution range 1:100-1:1000), immunoprecipitation [1-2 µg per 100-500 µg of total protein (1 ml of cell lysate)], immunofluorescence (starting dilution 1:50, dilution range 1:50-1:500) and solid phase ELISA (starting dilution 1:30, dilution range 1:30-1:3000).

Suitable for use as control antibody for SSH3 siRNA (h): sc-96338, SSH3 siRNA (m): sc-153844, SSH3 shRNA Plasmid (h): sc-96338-SH, SSH3 shRNA Plasmid (m): sc-153844-SH, SSH3 shRNA (h) Lentiviral Particles: sc-96338-V and SSH3 shRNA (m) Lentiviral Particles: sc-153844-V.

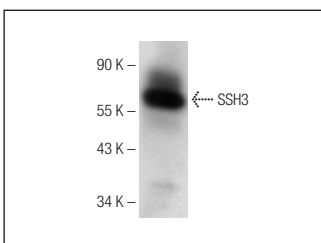
Molecular Weight of SSH3: 73 kDa.

Positive Controls: A-431 whole cell lysate: sc-2201.

RECOMMENDED SECONDARY REAGENTS

To ensure optimal results, the following support (secondary) reagents are recommended: 1) Western Blotting: use goat anti-rabbit IgG-HRP: sc-2004 (dilution range: 1:2000-1:100,000) or Cruz Marker[™] compatible goat anti-rabbit IgG-HRP: sc-2030 (dilution range: 1:2000-1:5000), Cruz Marker[™] Molecular Weight Standards: sc-2035, TBS Blotto A Blocking Reagent: sc-2333 and Western Blotting Luminol Reagent: sc-2048. 2) Immunoprecipitation: use Protein A/G PLUS-Agarose: sc-2003 (0.5 ml agarose/2.0 ml). 3) Immunofluorescence: use goat anti-rabbit IgG-FITC: sc-2012 (dilution range: 1:100-1:400) or goat anti-rabbit IgG-TR: sc-2780 (dilution range: 1:100-1:400) with UltraCruz[™] Mounting Medium: sc-24941.

DATA



SSH3 (H-229): sc-292041. Western blot analysis of SSH3 expression in A-431 whole cell lysate.

RESEARCH USE

For research use only, not for use in diagnostic procedures.



Try **SSH3 (B-7): sc-390058** or **SSH3 (G-2): sc-374560**, our highly recommended monoclonal alternatives to SSH3 (H-229).