

# STAMBPL1 (H-110): sc-292045

## BACKGROUND

STAMBPL1 (STAM-binding protein-like 1), also known as AMSH-FP, AMSH-LP (associated molecule with the SH3 domain of STAM like protein) or ALM $\alpha$ , is a 436 amino acid protein that belongs to the peptidase M67C family, contains one MPN domain and a JAMM motif that is essential for protease activity. Existing as two alternatively spliced isoforms, STAMBPL1 is a ubiquitously expressed protein that binds two zinc ions per subunit and acts as a zinc metalloprotease that specifically cleaves Lys-63-linked polyubiquitin chains. The gene that encodes STAMBPL1 maps to human chromosome 10q23.31. Chromosome 10 contains over 800 genes and 135 million nucleotides, making up nearly 4.5% of the human genome. PTEN is an important tumor suppressor gene located on chromosome 10 and, when defective, causes a genetic predisposition to cancer development known as Cowden syndrome. The chromosome 10 encoded gene ERCC6 is important for DNA repair and is linked to Cockayne syndrome which is characterized by extreme photosensitivity and premature aging. Tetrahydrobiopterin deficiency and a number of syndromes involving defective skull and facial bone fusion are also linked to chromosome 10.

## CHROMOSOMAL LOCATION

Genetic locus: STAMBPL1 (human) mapping to 10q23.31; Stambpl1 (mouse) mapping to 19 C1.

## SOURCE

STAMBPL1 (H-110) is a rabbit polyclonal antibody raised against amino acids 171-280 mapping within an internal region of STAMBPL1 of human origin.

## PRODUCT

Each vial contains 200  $\mu$ g IgG in 1.0 ml of PBS with < 0.1% sodium azide and 0.1% gelatin.

## APPLICATIONS

STAMBPL1 (H-110) is recommended for detection of STAMBPL1 of mouse, rat and human origin by Western Blotting (starting dilution 1:200, dilution range 1:100-1:1000), immunoprecipitation [1-2  $\mu$ g per 100-500  $\mu$ g of total protein (1 ml of cell lysate)], immunofluorescence (starting dilution 1:50, dilution range 1:50-1:500), immunohistochemistry (including paraffin-embedded sections) (starting dilution 1:50, dilution range 1:50-1:500) and solid phase ELISA (starting dilution 1:30, dilution range 1:30-1:3000).

STAMBPL1 (H-110) is also recommended for detection of STAMBPL1 in additional species, including equine and porcine.

Suitable for use as control antibody for STAMBPL1 siRNA (h): sc-90796, STAMBPL1 siRNA (m): sc-153876, STAMBPL1 shRNA Plasmid (h): sc-90796-SH, STAMBPL1 shRNA Plasmid (m): sc-153876-SH, STAMBPL1 shRNA (h) Lentiviral Particles: sc-90796-V and STAMBPL1 shRNA (m) Lentiviral Particles: sc-153876-V.

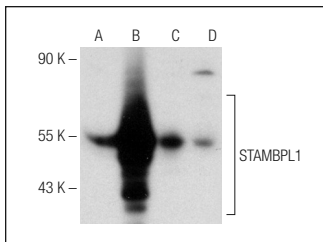
Molecular Weight of STAMBPL1 isoforms: 50/52 kDa.

Positive Controls: HeLa whole cell lysate: sc-2200, Jurkat whole cell lysate: sc-2204 or STAMBPL1 (m): 293T Lysate: sc-123807.

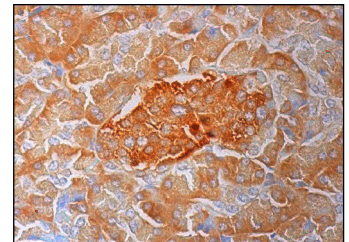
## RECOMMENDED SECONDARY REAGENTS

To ensure optimal results, the following support (secondary) reagents are recommended: 1) Western Blotting: use goat anti-rabbit IgG-HRP: sc-2004 (dilution range: 1:2000-1:100,000) or Cruz Marker™ compatible goat anti-rabbit IgG-HRP: sc-2030 (dilution range: 1:2000-1:5000), Cruz Marker™ Molecular Weight Standards: sc-2035, TBS Blotto A Blocking Reagent: sc-2333 and Western Blotting Luminol Reagent: sc-2048. 2) Immunoprecipitation: use Protein A/G PLUS-Agarose: sc-2003 (0.5 ml agarose/2.0 ml). 3) Immunofluorescence: use goat anti-rabbit IgG-FITC: sc-2012 (dilution range: 1:100-1:400) or goat anti-rabbit IgG-TR: sc-2780 (dilution range: 1:100-1:400) with UltraCruz™ Mounting Medium: sc-24941. 4) Immunohistochemistry: use ImmunoCruz™: sc-2051 or ABC: sc-2018 rabbit IgG Staining Systems.

## DATA



STAMBPL1 (H-110): sc-292045, Western blot analysis of STAMBPL1 expression in non-transfected: sc-117752 (A) and mouse STAMBPL1 transfected: sc-123807 (B) 293T whole cell lysates and HeLa (C) and Jurkat (D) nuclear extracts.



STAMBPL1 (H-110): sc-292045. Immunoperoxidase staining of formalin fixed, paraffin-embedded human pancreas tissue showing cytoplasmic staining of exocrine glandular cells and Islets of Langerhans.

## SELECT PRODUCT CITATIONS

1. Fritsch, J., et al. 2014. Cell fate decisions regulated by k63 ubiquitination of tumor necrosis factor receptor 1. *Mol. Cell. Biol.* 34: 3214-3228.

## STORAGE

Store at 4° C, \*\*DO NOT FREEZE\*\*. Stable for one year from the date of shipment. Non-hazardous. No MSDS required.

## RESEARCH USE

For research use only, not for use in diagnostic procedures.

## PROTOCOLS

See our web site at [www.scbt.com](http://www.scbt.com) or our catalog for detailed protocols and support products.


 MONOS  
Satisfation  
Guaranteed

Try **STAMBPL1 (C-11): sc-376526**, our highly recommended monoclonal alternative to STAMBPL1 (H-110).