

Swiprosin-1 (H-40): sc-292051

BACKGROUND

Swiprosin-1 (SWS1), also known as EFHD2 (EF-hand domain-containing protein D2), is a 240 amino acid protein that regulates spontaneous apoptosis through the regulation of Bcl-x_S abundance. Localized to membrane raft, Swiprosin-1 is expressed in lymphocytes and contains two EF-hand domains. The gene encoding Swiprosin-1 maps to human chromosome 1, which spans 260 million base pairs, contains over 3,000 genes and comprises nearly 8% of the human genome. Chromosome 1 houses a large number of disease-associated genes, including those that are involved in familial adenomatous polyposis, Stickler syndrome, Parkinson's disease, Gaucher disease, schizophrenia and Usher syndrome. Aberrations in chromosome 1 are found in a variety of cancers, including head and neck cancer, malignant melanoma and multiple myeloma.

REFERENCES

1. Eudy, J.D., et al. 1998. Mutation of a gene encoding a protein with extracellular matrix motifs in Usher syndrome type IIa. *Science* 280: 1753-1757.
2. Lau, E.K., et al. 1999. Two novel polymorphic sequences in the glucocerebrosidase gene region enhance mutational screening and founder effect studies of patients with Gaucher disease. *Hum. Genet.* 104: 293-300.
3. Vuadens, F., et al. 2002. Identification of specific proteins in different lymphocyte populations by proteomic tools. *Proteomics* 2: 105-111.
4. Plasilova, M., et al. 2004. Exclusion of an extracolonic disease modifier locus on chromosome 1p33-36 in a large Swiss familial adenomatous polyposis kindred. *Eur. J. Hum. Genet.* 12: 365-371.
5. Vuadens, F., et al. 2004. Identification of swiprosin 1 in human lymphocytes. *Proteomics* 4: 2216-2220.
6. Oliveira, S.A., et al. 2005. Identification of risk and age-at-onset genes on chromosome 1p in Parkinson disease. *Am. J. Hum. Genet.* 77: 252-264.
7. Holliday, E.G., et al. 2009. Strong evidence for a novel schizophrenia risk locus on chromosome 1p31.1 in homogeneous pedigrees from Tamil Nadu, India. *Am. J. Psychiatry* 166: 206-215.

CHROMOSOMAL LOCATION

Genetic locus: EFHD2 (human) mapping to 1p36.21; Efh2 (mouse) mapping to 4 E1.

SOURCE

Swiprosin-1 (H-40) is a rabbit polyclonal antibody raised against amino acids 41-80 mapping near the N-terminus of Swiprosin-1 of human origin.

PRODUCT

Each vial contains 200 µg IgG in 1.0 ml of PBS with < 0.1% sodium azide and 0.1% gelatin.

STORAGE

Store at 4° C, ****DO NOT FREEZE****. Stable for one year from the date of shipment. Non-hazardous. No MSDS required.

APPLICATIONS

Swiprosin-1 (H-40) is recommended for detection of Swiprosin-1 of mouse, rat and human origin by Western Blotting (starting dilution 1:200, dilution range 1:100-1:1000), immunoprecipitation [1-2 µg per 100-500 µg of total protein (1 ml of cell lysate)], immunofluorescence (starting dilution 1:50, dilution range 1:50-1:500) and solid phase ELISA (starting dilution 1:30, dilution range 1:30-1:3000).

Swiprosin-1 (H-40) is also recommended for detection of Swiprosin-1 in additional species, including bovine.

Suitable for use as control antibody for Swiprosin-1 siRNA (h): sc-78656, Swiprosin-1 siRNA (m): sc-153964, Swiprosin-1 shRNA Plasmid (h): sc-78656-SH, Swiprosin-1 shRNA Plasmid (m): sc-153964-SH, Swiprosin-1 shRNA (h) Lentiviral Particles: sc-78656-V and Swiprosin-1 shRNA (m) Lentiviral Particles: sc-153964-V.

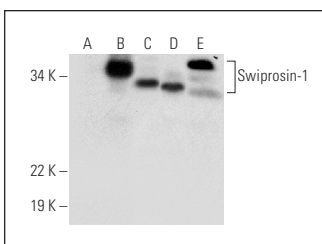
Molecular Weight of Swiprosin-1: 27 kDa.

Positive Controls: Swiprosin-1 (h): 293T Lysate: sc-111884, A-431 whole cell lysate: sc-2201 or Raji whole cell lysate: sc-364236.

RECOMMENDED SECONDARY REAGENTS

To ensure optimal results, the following support (secondary) reagents are recommended: 1) Western Blotting: use goat anti-rabbit IgG-HRP: sc-2004 (dilution range: 1:2000-1:100,000) or Cruz Marker™ compatible goat anti-rabbit IgG-HRP: sc-2030 (dilution range: 1:2000-1:5000), Cruz Marker™ Molecular Weight Standards: sc-2035, TBS Blotto A Blocking Reagent: sc-2333 and Western Blotting Luminol Reagent: sc-2048. 2) Immunoprecipitation: use Protein A/G PLUS-Agarose: sc-2003 (0.5 ml agarose/2.0 ml). 3) Immunofluorescence: use goat anti-rabbit IgG-FITC: sc-2012 (dilution range: 1:100-1:400) or goat anti-rabbit IgG-TR: sc-2780 (dilution range: 1:100-1:400) with UltraCruz™ Mounting Medium: sc-24941.

DATA



Swiprosin-1 (H-40): sc-292051. Western blot analysis of Swiprosin-1 expression in non-transfected 293T: sc-117752 (A), human Swiprosin-1 transfected 293T: sc-111884 (B), A-431 (C) and Raji (D) whole cell lysates and mouse brain tissue extract (E).

RESEARCH USE

For research use only, not for use in diagnostic procedures.

PROTOCOLS

See our web site at www.scbt.com or our catalog for detailed protocols and support products.