

# TSSC1 (H-193): sc-292059

## BACKGROUND

TSSC1 (tumor suppressing subtransferable candidate 1) is a 387 amino acid protein that contains 5 WD repeat domains-motifs that may be involved in protein-protein interactions. Expressed throughout the body, TSSC1 is composed of three exons and shares similarity with RbAp48 (a retinoblastoma binding protein) and the *Drosophila* protein Caf-1. The gene encoding TSSC1 is thought to be associated with a tumor-suppressing region that, if altered, can lead to lung, ovarian and breast cancer, rhabdomyosarcoma, Beckwith-Wiedemann syndrome, Wilms' tumor, low birth weight and adrenocortical carcinoma.

## REFERENCES

1. Hu, R.J., et al. 1997. A 2.5-Mb transcript map of a tumor-suppressing subchromosomal transferable fragment from 11p15.5, and isolation and sequence analysis of three novel genes. *Genomics* 46: 9-17.
2. Scelfo, R., et al. 1998. Subchromosomal assignment1 of the TSSC1 gene to human chromosome band 11p15.5 near the HBB gene cluster. *Cytogenet. Cell Genet.* 83: 52-53.
3. Sohal, J., et al. 2001. Identification of four new translocations involving FGFR1 in myeloid disorders. *Genes Chromosomes Cancer* 32: 155-163.

## CHROMOSOMAL LOCATION

Genetic locus: TSSC1 (human) mapping to 2p25.3; Tssc1 (mouse) mapping to 12 A2.

## SOURCE

TSSC1 (H-193) is a rabbit polyclonal antibody raised against amino acids 1-193 mapping at the N-terminus of TSSC1 of human origin.

## PRODUCT

Each vial contains 200 µg IgG in 1.0 ml of PBS with < 0.1% sodium azide and 0.1% gelatin.

## APPLICATIONS

TSSC1 (H-193) is recommended for detection of TSSC1 of mouse, rat and human origin by Western Blotting (starting dilution 1:200, dilution range 1:100-1:1000), immunoprecipitation [1-2 µg per 100-500 µg of total protein (1 ml of cell lysate)], immunofluorescence (starting dilution 1:50, dilution range 1:50-1:500), immunohistochemistry (including paraffin-embedded sections) (starting dilution 1:50, dilution range 1:50-1:500) and solid phase ELISA (starting dilution 1:30, dilution range 1:30-1:3000).

TSSC1 (H-193) is also recommended for detection of TSSC1 in additional species, including equine, porcine and avian.

Suitable for use as control antibody for TSSC1 siRNA (h): sc-94467, TSSC1 siRNA (m): sc-154738, TSSC1 shRNA Plasmid (h): sc-94467-SH, TSSC1 shRNA Plasmid (m): sc-154738-SH, TSSC1 shRNA (h) Lentiviral Particles: sc-94467-V and TSSC1 shRNA (m) Lentiviral Particles: sc-154738-V.

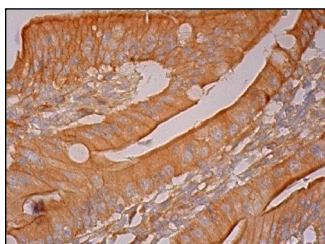
Molecular Weight of TSSC1: 44 kDa.

Positive Controls: PC-12 cell lysate: sc-2250.

## RECOMMENDED SECONDARY REAGENTS

To ensure optimal results, the following support (secondary) reagents are recommended: 1) Western Blotting: use goat anti-rabbit IgG-HRP: sc-2004 (dilution range: 1:2000-1:100,000) or Cruz Marker™ compatible goat anti-rabbit IgG-HRP: sc-2030 (dilution range: 1:2000-1:5000), Cruz Marker™ Molecular Weight Standards: sc-2035, TBS Blotto A Blocking Reagent: sc-2333 and Western Blotting Luminol Reagent: sc-2048. 2) Immunoprecipitation: use Protein A/G PLUS-Agarose: sc-2003 (0.5 ml agarose/2.0 ml). 3) Immunofluorescence: use goat anti-rabbit IgG-FITC: sc-2012 (dilution range: 1:100-1:400) or goat anti-rabbit IgG-TR: sc-2780 (dilution range: 1:100-1:400) with UltraCruz™ Mounting Medium: sc-24941. 4) Immunohistochemistry: use ImmunoCruz™: sc-2051 or ABC: sc-2018 rabbit IgG Staining Systems.

## DATA



TSSC1 (H-193): sc-292059. Immunoperoxidase staining of formalin fixed, paraffin-embedded human small intestine tissue showing cytoplasmic and membrane staining of glandular cells.

## STORAGE

Store at 4° C, \*\*DO NOT FREEZE\*\*. Stable for one year from the date of shipment. Non-hazardous. No MSDS required.

## RESEARCH USE

For research use only, not for use in diagnostic procedures.

## PROTOCOLS

See our web site at [www.scbt.com](http://www.scbt.com) or our catalog for detailed protocols and support products.