

DIXDC1 (H-300): sc-292126

BACKGROUND

DIXDC1 (DIX domain containing 1), also known as CCD1 or dixin, is a 683 amino acid protein that localizes to the cell junction and to the cytoplasm in an isoform-dependent manner and contains one DIX domain and one CH (calponin-homology) domain. Expressed ubiquitously with highest expression in skeletal and cardiac muscle, DIXDC1 interacts with F-actin and functions as a positive regulator of the Wnt signaling pathway, effectively targeting the β -catenin-TCF complex for gene expression and mediating actin dynamics within the cytoskeleton. The gene encoding DIXDC1 maps to human chromosome 11, which houses over 1,400 genes and comprises nearly 4% of the human genome. Jervell and Lange-Nielsen syndrome, Jacobsen syndrome, Niemann-Pick disease, hereditary angioedema and Smith-Lemli-Opitz syndrome are associated with defects in genes that maps to chromosome 11.

REFERENCES

1. Katoh, M. and Katoh, M. 2003. KIAA1735 gene on human chromosome 11q23.1 encodes a novel protein with myosin-tail homologous domain and C-terminal DIX domain. *Int. J. Oncol.* 23: 145-150.
2. Wong, C.K., Luo, W., Deng, Y., Zou, H., Ye, Z. and Lin, S.C. 2004. The DIX domain protein coiled-coil-DIX1 inhibits c-Jun N-terminal kinase activation by Axin and dishevelled through distinct mechanisms. *J. Biol. Chem.* 279: 39366-39373.
3. Luo, W., Zou, H., Jin, L., Lin, S., Li, Q., Ye, Z., Rui, H. and Lin, S.C. 2005. Axin contains three separable domains that confer intramolecular, homodimeric, and heterodimeric interactions involved in distinct functions. *J. Biol. Chem.* 280: 5054-5060.
4. Wang, X., Zheng, L., Zeng, Z., Zhou, G., Chien, J., Qian, C., Vasmatzis, G., Shridhar, V., Chen, L. and Liu, W. 2006. DIXDC1 isoform, I-DIXDC1, is a novel filamentous Actin-binding protein. *Biochem. Biophys. Res. Commun.* 347: 22-30.
5. Online Mendelian Inheritance in Man, OMIM[™]. 2006. Johns Hopkins University, Baltimore, MD. MIM Number: 610493. World Wide Web URL: <http://www.ncbi.nlm.nih.gov/omim/>

CHROMOSOMAL LOCATION

Genetic locus: DIXDC1 (human) mapping to 11q23.1; Dixdc1 (mouse) mapping to 9 A5.3.

SOURCE

DIXDC1 (H-300) is a rabbit polyclonal antibody raised against amino acids 121-420 mapping within an internal region of DIXDC1 of human origin.

PRODUCT

Each vial contains 200 μ g IgG in 1.0 ml of PBS with < 0.1% sodium azide and 0.1% gelatin.

STORAGE

Store at 4° C, ****DO NOT FREEZE****. Stable for one year from the date of shipment. Non-hazardous. No MSDS required.

APPLICATIONS

DIXDC1 (H-300) is recommended for detection of DIXDC1 isoforms 1, 2, 3 and 4 of mouse, rat and human origin by Western Blotting (starting dilution 1:200, dilution range 1:100-1:1000), immunoprecipitation [1-2 μ g per 100-500 μ g of total protein (1 ml of cell lysate)], immunofluorescence (starting dilution 1:50, dilution range 1:50-1:500) and solid phase ELISA (starting dilution 1:30, dilution range 1:30-1:3000).

DIXDC1 (H-300) is also recommended for detection of DIXDC1 isoforms 1, 2, 3 and 4 in additional species, including equine, canine, bovine and porcine.

Suitable for use as control antibody for DIXDC1 siRNA (h): sc-96677, DIXDC1 siRNA (m): sc-143051, DIXDC1 shRNA Plasmid (h): sc-96677-SH, DIXDC1 shRNA Plasmid (m): sc-143051-SH, DIXDC1 shRNA (h) Lentiviral Particles: sc-96677-V and DIXDC1 shRNA (m) Lentiviral Particles: sc-143051-V.

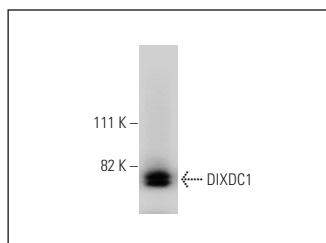
Molecular Weight of DIXDC1: 77 kDa.

Positive Controls: mouse brain extract: sc-2253.

RECOMMENDED SECONDARY REAGENTS

To ensure optimal results, the following support (secondary) reagents are recommended: 1) Western Blotting: use goat anti-rabbit IgG-HRP: sc-2004 (dilution range: 1:2000-1:100,000) or Cruz Marker[™] compatible goat anti-rabbit IgG-HRP: sc-2030 (dilution range: 1:2000-1:5000), Cruz Marker[™] Molecular Weight Standards: sc-2035, TBS Blotto A Blocking Reagent: sc-2333 and Western Blotting Luminol Reagent: sc-2048. 2) Immunoprecipitation: use Protein A/G PLUS-Agarose: sc-2003 (0.5 ml agarose/2.0 ml). 3) Immunofluorescence: use goat anti-rabbit IgG-FITC: sc-2012 (dilution range: 1:100-1:400) or goat anti-rabbit IgG-TR: sc-2780 (dilution range: 1:100-1:400) with UltraCruz[™] Mounting Medium: sc-24941.

DATA



DIXDC1 (H-300): sc-292126. Western blot analysis of DIXDC1 expression in mouse brain tissue extract.

RESEARCH USE

For research use only, not for use in diagnostic procedures.

MONOS
Satisfaction
Guaranteed

Try **DIXDC1 (A-6): sc-377160**, our highly recommended monoclonal alternative to DIXDC1 (H-300).