

CREB3L3 (H-148): sc-292135

BACKGROUND

CREB3L3 (cAMP-responsive element-binding protein 3-like protein 3), also known as CREBH or HYST1481, is a 461 amino acid single-pass type II membrane protein that localizes to the endoplasmic reticulum (ER) and, in response to ER stress, is cleaved and translocated to the nucleus. Expressed exclusively in liver, CREB3L3 functions as a transcription factor that, during ER stress, is thought to activate genes that are involved in both the unfolded protein response and the acute phase response (APR). Additionally, CREB3L3 is under-expressed in hepatocellular carcinoma, suggesting a possible role as a tumor suppressor. CREB3L3 functions as a dimer and contains one leucine zipper domain, a KDEL-like sequence and a bZIP domain, through which it conveys its DNA binding ability. Three isoforms of CREB3L3 exist due to alternative splicing events.

CHROMOSOMAL LOCATION

Genetic locus: CREB3L3 (human) mapping to 19p13.3; Creb3l3 (mouse) mapping to 10 C1.

SOURCE

CREB3L3 (H-148) is a rabbit polyclonal antibody raised against amino acids 90-237 mapping within an internal region of CREB3L3 of human origin.

PRODUCT

Each vial contains 200 µg IgG in 1.0 ml of PBS with < 0.1% sodium azide and 0.1% gelatin.

STORAGE

Store at 4° C, ****DO NOT FREEZE****. Stable for one year from the date of shipment. Non-hazardous. No MSDS required.

RESEARCH USE

For research use only, not for use in diagnostic procedures.

APPLICATIONS

CREB3L3 (H-148) is recommended for detection of CREB3L3 of mouse and human origin by Western Blotting (starting dilution 1:200, dilution range 1:100-1:1000), immunoprecipitation [1-2 µg per 100-500 µg of total protein (1 ml of cell lysate)], immunofluorescence (starting dilution 1:50, dilution range 1:50-1:500) and solid phase ELISA (starting dilution 1:30, dilution range 1:30-1:3000).

Suitable for use as control antibody for CREB3L3 siRNA (h): sc-72999, CREB3L3 siRNA (m): sc-77022, CREB3L3 shRNA Plasmid (h): sc-72999-SH, CREB3L3 shRNA Plasmid (m): sc-77022-SH, CREB3L3 shRNA (h) Lentiviral Particles: sc-72999-V and CREB3L3 shRNA (m) Lentiviral Particles: sc-77022-V.

CREB3L3 (H-148) X TransCruz antibody is recommended for Gel Supershift and ChIP applications.

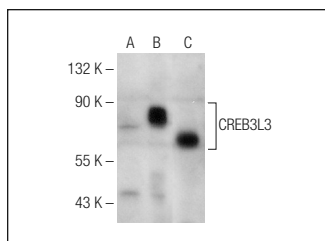
Molecular Weight of CREB3L3: 50 kDa.

Positive Controls: CREB3L3 (h): 293T lysate: sc-370151 or mouse liver extract: sc-2256.

RECOMMENDED SECONDARY REAGENTS

To ensure optimal results, the following support (secondary) reagents are recommended: 1) Western Blotting: use goat anti-rabbit IgG-HRP: sc-2004 (dilution range: 1:2000-1:100,000) or Cruz Marker™ compatible goat anti-rabbit IgG-HRP: sc-2030 (dilution range: 1:2000-1:5000), Cruz Marker™ Molecular Weight Standards: sc-2035, TBS Blotto A Blocking Reagent: sc-2333 and Western Blotting Luminol Reagent: sc-2048. 2) Immunoprecipitation: use Protein A/G PLUS-Agarose: sc-2003 (0.5 ml agarose/2.0 ml). 3) Immunofluorescence: use goat anti-rabbit IgG-FITC: sc-2012 (dilution range: 1:100-1:400) or goat anti-rabbit IgG-TR: sc-2780 (dilution range: 1:100-1:400) with UltraCruz™ Mounting Medium: sc-24941.

DATA



CREB3L3 (H-148): sc-292135. Western blot analysis of CREB3L3 expression in non-transfected: sc-117752 (A) and human CREB3L3 transfected: sc-370151 (B) 293T whole cell lysates and mouse liver tissue extract (C).

PROTOCOLS

See our web site at www.scbt.com or our catalog for detailed protocols and support products.

MONOS
Satisfaction
Guaranteed

Try **CREB3L3 (E-2): sc-377332** or **CREB3L3 (G-11): sc-377156**, our highly recommended monoclonal alternatives to CREB3L3 (H-148).